

Will Canberra close our Post Office?

Chris Baker, Vice President, APA

In an election year, it's surprising that a government department would make the controversial decision to close an essential suburban post office. This is the situation in Artarmon, where the announcement has sparked significant concern among the local community.

Artarmon's Post Office is slated to close on 12 March 2025, a decision that has left residents, businesses, and community leaders scrambling for answers. The Artarmon Progress Association (APA) and Willoughby Council have both written to Australia Post's CEO, Paul Graham, expressing strong opposition to the closure. Despite assurances from Australia Post as recently as late 2024 that "no decision had been made", a closure notice was quietly posted on the door in early January—conveniently during the summer holidays, when many locals were away.

Artarmon's Post Office is entering its 116th year of continuous operation. Established in 1909, it moved to its current location in 1923. The Post Office's current building is scheduled for redevelopment into a multi-story residential and commercial complex. Community leaders argue that there is no reason the Post Office couldn't relocate to another site on the Hampden Road shopping strip. Australia Post, however, seems to have other plans. According to CEO Paul Graham, "There are more post offices than Coles, Woolies, Aldi, IGA, and FoodWorks combined," implying that the lower North Shore has sufficient coverage. End of story? Not for Artarmon.

Community backlash

The closure has sparked strong community opposition. A protest, initiated at short notice by Willoughby Councillor Roy McCullagh, drew a large turnout, including Federal election hopefuls for the "new Bradfield" Nicolette Boele (Independent) and Giselle Kapterian (Liberal). Willoughby's mayor, Tanya Taylor echoed Council's support. A number of local councillors and the state member for Willoughby, Tim James, were also in attendance. Outgoing Federal MP Kylea Tink pledged to raise the matter in Canberra while local state member Tim James also voiced his strong support and subsequently initiated an online petition to bring the matter to the attention of his state counterparts.

Councillor Anna Greco mobilised a physical petition, gathering over 1800 signatures with the help of a lot of people and the retailers on Hampden Road. This powerful petition was sent to the Minister for Communications, Michelle Rowland, on 23 January and tabled in Parliament in mid February.

More than just a Post Office

Artarmon's Post Office is more than a place to buy stamps. It serves a growing residential population, supports small businesses in the industrial estate, and contributes to the recently revitalised Artarmon Village. Artarmon's diverse community also requires easy access for passport renewals. The Post Office's closure could challenge the vibrancy of the local economy and make accessing services more difficult for some groups, including the elderly and those without transport.

The bigger picture

This local fight is part of a broader national debate over Australia Post's future. As noted in the Australian Financial Review (1 March, 2024), CEO Paul Graham has been pushing for significant downsizing, citing financial pressures and declining foot traffic. While the parcels business continues to grow, the letters business recorded a huge

Inside this issue

Meet Bradfield candidates p2
Mick the barber p6

Spotlight on "Stitch" p7
Decluttering p8
Artarmon book club p10
Whipbirds p12

Continued page 2

supporting the Artarmon community spirit

The Artarmon Gazette is published quarterly by the Artarmon Progress Association. It is distributed by volunteers, free of charge to Artarmon residents and businesses.

The Artarmon Gazette seeks to inform residents and business people about current local events and issues and discusses matters of interest and concern.

Written contributions and photographs are welcome. Please submit all non-advertising material to the editor. We accept material via email. Editing may be necessary for style, space or layout considerations.

Views and opinions expressed in the Artarmon Gazette are not necessarily those of the Artarmon Progress Association or its members. Although all care is taken for accuracy, no responsibility can be taken by the association, editor, designer or printer.

Publisher **Glenda Hewitt**
publisher@artarmonprogress.org.au

Editorial Team **Jacquelyn Hole**
Felicity Vacchini
Jane Cozens
Lauren Tinyou
editor@artarmonprogress.org.au

Advertising advertise@artarmonprogress.org.au

Distribution **Judy Simpson**

Design/ **Meredith Shimmin**

Production meredith@shimmin.com.au

Printing **The Print Facility**
RAnge@theprintfacility.com.au

Print Run 5,300 copies

Address PO Box 540 Artarmon 1570

Website www.artarmonprogress.org.au/Gazette

Published by:

Artarmon Progress Association

ABN 55 397 278 515

Since 1906

The APA committee meets at 7.30pm on the 1st Wednesday of the month, excluding January. Public welcome.

Venue:

**Artarmon Community Hall,
139 Artarmon Road, Artarmon**

PO Box 540 Artarmon NSW 1570
sec@artarmonprogress.org.au
www.artarmonprogress.org.au

President Glenda Hewitt

Vice President Chris Baker

Treasurer Adrian Alexander

Secretary Daniel Rasins

Traffic & Parking Chris Baker

Federation TBA

Mary Ann Irvin

Glenda Hewitt

Membership Sumita Kumar

Heritage & History Project Adrian Alexander

DAs and Council Liaison Plamen Bassarov

NEXT EDITION DEADLINES

Wed 7 May Copy & advertising due

Sun 8 June Delivery complete

Editorial

This edition of the Artarmon Gazette focuses on recycling. Small everyday ways that we can prevent waste is a first step to reducing our environmental impact. There is an article about decluttering, hints about where and how to dispose of this 'clutter', introduction to a new food waste collection service that's coming and a youth view on the issue of recycling.

One of the latest and unexpected issues that has arisen in Artarmon is the proposed closure of the Post Office. The rally against this important issue shows great community effort and is a credit to all.

We say farewell to one of our local identities, Mick the barber, recognise a local OAM

recipient and introduce you to the founder of Stitch, a social networking group.

Regular articles and snippets bring news from around the community, plus you will also find stories on local birds, street libraries and a local book club. Sadly, due to space constraints in this edition of the Gazette, history enthusiasts will have to wait until the next edition for the regular history article

We welcome contributions from the Artarmon community: maybe a letter to the editor and/or a suggestion of a story or person of interest. We are also still looking for a permanent editor and there is space on the Gazette team for a new advertising coordinator. Come and join the fun.

**Jane, Felicity, Jacqueline,
Lauren and Glenda**

QUICK QUIZ

March 2025

1. When was Artarmon Public School founded?
2. How far is the Artarmon to Middle Harbour walk (from station to Tunks Park) and what is the name of the creek followed?
3. What is the speed limit on Hampden Road between Brand Street and Barton Road?
4. How many roundabouts are there on Artarmon Road (between Elizabeth Street and Willoughby Road)?
5. Which generation are the best recyclers?

(Answers on page 12)

Post Office continued from page 1

\$361.8 million loss for the year ending 30 June 2024. Graham has argued that changes, including branch closures, are necessary to ensure Australia Post's long-term viability.

However, Artarmon's residents aren't giving up without a fight. This is more than a local issue and more than just parcels; it's a test of whether the government values community.

The message from Artarmon is clear: this decision must be reconsidered. A viable alternative can and should be found to keep this essential service at the heart of the community. ●

Make your voice heard

- Ring Australia Post 137678 and complain
- Write to Australia Post CEO Paul Graham (by post!)
- Write to Federal Minister, Michele Rowland

Meet the Bradfield candidates

As Artarmon will be absorbed into the Bradfield electorate at the upcoming Federal election, candidates have been invited to introduce themselves to Artarmon voters.

Join them for a conversation

PUBLIC INFORMATION EVENING

Wednesday 12 March, 7.30pm

Artarmon Library Community Hall, 139 Artarmon Road

(Note: As this is a meet and greet, no pamphlets, leaflets, tee shirts, promotional material or branding will be allowed)

A note from the President



Australia Post announced, via letter dated 6 January 2025, that they were closing Artarmon Post Office and it shook the core of our neighbourhood.

Thank you for rallying on 11 January and to the many Councillors who attended. It was a great display of community action. However, with the closure scheduled for 12 March, we cannot give in yet. Your phone calls to the 13 76 78 complaint line are letting Australia Post know of your opposition to the closure. And if you haven't phoned yet, now is the time!

A huge thank you to everyone who signed the petition and collected signatures. Getting over 1800 signatures in the space of just over a week was an outstanding effort. The petition has now been submitted to the Federal Minister for Communications, The Hon Michelle Rowland MP. There have been other on-line petitions, but the APA does not have any visibility of these.

Letters have also been written to the CEO of Australia Post and various Federal Ministers. We have to demonstrate that our Post Office is profitable and a key business in our suburb.

The strength of the APA lies with you and 2025 membership renewals continue to be received. By paying a nominal fee to belong to the APA, you are helping us cover the cost of improved technology and contributing towards insurance and running costs. The APA exists to be the voice of our very diverse community and whether it is a time commitment or a membership subscription, your involvement reflects the strength of our suburb. By the way, there were a couple of memberships received where we have not been able to match the person's name against an email address. If you have not heard from us after paying your membership, please email me and I'll work with you to get it sorted. pres@artarmonprogress.org.au

And finally, keep the evening of 12 March free. At the next Federal election Artarmon will become part of the electorate of Bradfield and all the candidates will be new to us. All candidates have been invited (or will be invited once we know who they are) to attend the Public Information Meeting on 12 March to introduce themselves. It will not be a political rally: there will be no pamphlets, tee shirts or placards: it is simply a chance for you to meet the candidates, get to know them and ask a few questions.

**Glenda Hewitt
President APA**

Follow us on Facebook
 <https://www.facebook.com/ArtarmonPA>

40km for Artarmon?

The discussion so far

In the December Artarmon Gazette you were asked your thoughts on whether the community should explore limiting local road speeds to 40km. The reactions have been mixed and all written input has been put on the Artarmon Progress Association's Facebook page for transparency.

The tally so far is:

- 3 - strongly in favour
- 4 - in some streets
- 5 - strongly against

A summary of comments:

- 50km strikes a better balance between vehicles and pedestrians



- In some streets especially around schools
- Driving culture is one of maturity and responsibility. Keep existing speed limits
- Only if restricted to high pedestrian areas
- Slower speeds result in increased travel times
- Add speed bumps, not speed restrictions.

The discussion continues. ●

Artarmon
PROGRESS ASSOCIATION INC.

MEMBERSHIP

歡迎大家參加
一起為我們的社區文化活動努力。

The APA is an active community organisation that has been advocating on behalf of residents and businesses in Artarmon since 1906.

JOIN NOW

Membership due by 31 March, 2025

- \$15 Individual
- \$25 Household
- \$20 Affiliate

Payment details:

Account name	Artarmon Progress Association Inc
BSB	032-090
Account number	376920

Please include your full name and street address when making the bank transfer. Email pres@artarmonprogress.org.au and confirm payment has been made.

Please note: Current membership is deemed to have lapsed if the 2025 membership subscription has not been paid by 31 March 2025.

artarmon framing

Custom framing

- Mounting
- Laminating
- Artwork Hanging Systems
- Canvas Stretching
- Mirrors
- Conservation Framing
- Art Restoration
- Advice and Help with Presentation & Conservation of Most Things

Andrew Fortescue
94a Reserve Road, Artarmon
Ph: 9439 9992

9.00 -4.30 Mon -Fri • 10.00 -2.00 Sat

What's on in Artarmon

Artarmon Guides and Junior Guides

Cleland Park, Barton Road, Artarmon
Email regionmanagers@girlguides-nswactnt.org.au

Artarmon Parklands Community Garden

Thursday and Sunday mornings.
Contact ArtarmonCommunityGardensSec@gmail.com

Artarmon Progress Association

1st Wed. Monthly (ex Jan) 7.30pm
 Artarmon Community Hall
 139 Artarmon Road, Artarmon.

Playtime at St Basil's

Wed 10am-12pm during school term. St Basil's church hall, 6 Broughton Road.
 www.artarmonchurch.org

Bush Care (3 Groups)

Artarmon Reserve. 1st & 3rd Wed. 2nd Thurs. 3rd Sun monthly - 9am - 12 noon **Contact** Council: 9777 7875

Cleland Tennis Club

Barton Road, Artarmon, 9419 8844

Domestic Violence Line

1800 65 64 63

Northern Sydney Women's Domestic Violence Court Advocacy

1800 737 732

Good Beginnings Chinese Playgroup

Artarmon Kids Cottage. Community Centre, 18 Broughton Road, Artarmon. Thursday, 10am - 12 noon

Lifeline - Harbour to Hawkesbury

13 11 14

IN THE LIBRARY

Artarmon Book Club

Contact Artarmon Library 9419 2849

NEW Tech Help

Thursdays 4pm – 5pm
 Receive personalised support with the digital library every Thursday during Tech Help sessions.

Story Play (0-4 years)

Mondays 10am – 10.30am
 Playing, singing and stories. These free weekly sessions are run by library staff and TAFE students.

Kids Create (5-10 years)

Tuesdays 3.30pm – 4.30pm on the second Tuesday of every month

Justice of the Peace Service

Thursdays 6pm – 7pm



Elizabeth Street mural

Rosemary Towner

In mid 2024 Council called for artists to add art to streetscapes within the Willoughby area as part of the Emerge Festival.

Artarmon's space was the No Gaps dental building on the corner of Elizabeth Street and Tindale Road.

The artwork by Blue Mountains based artist, Mandy Schone-Salter was unveiled by the Mayor on 16 December 2024.

Art has the unique ability to bring people together, spark conversations, and transform ordinary spaces into unique locations. This is true of this mural. The fresh and bright art is a great addition to the community and highlights the beautiful native flowers and plants - trigger plant, hibbertia, cut-leaf daisy, native storksbill and the native flax. If you haven't been to see it yet, pop down for a look and "shop local" at the nearby businesses. ●

Artarmon Library Opening Hours

Monday:	10am - 2pm
Tuesday,	2pm - 5pm
Thursday:	2pm - 8pm
Friday:	2pm - 5pm
Saturday:	10am - 1pm



End of the working week?

Every Friday, 5pm

Aperitivo menu + locally brewed beers, Italian wines & cocktails



ISLAND HOPPER
BREWERY

ZUCCHEROCOFFEBAR  ISLANDHOPPERBREWERY



Artarmon Village: green and growing

Nick Logan, President, Artarmon Village Inc

Well a couple of months of rain have seen the new plantings from the Hampden Road upgrade thriving and Artarmon Village is looking a treat.

The inaugural Artarmon Street Festival in November was a massive hit. The general consensus was that it was akin to a long overdue street party. It was more personal than a Chatswood or Crows Nest event and people really enjoyed catching up and celebrating our community.

Congratulations to all the food outlets on the strip who have invested in outdoor seating and shade. Some are saying that the village has become the Champs-Élysées of the north shore. It's a lovely place to have a coffee or some lunch while you nail a few chores at the shops.

The tiered brickwork on the railway side of Hampden Road had to be redone because of inconsistencies in the mortar. It is another month of dust, noise and PTSD for the business owners but it should be finished by

the time of publication. I hope you can tell the difference.

The community has rallied to retain a post office in Artarmon despite Australia Post announcing it will close on 12 March. The coordinated support from Artarmon Progress Association, Willoughby City Council, and our elected representatives has been admirable. Artarmon PO is a healthy business and its accessibility is undeniable. If it can't be retained then hopefully someone will consider opening a licensed Post (LPO) in the shopping strip.

Artarmon shops accessibility is a very attractive asset. People don't come to Artarmon by train to shop yet. The bulk of the shoppers drive, and they rely on accessible parking. We have been working for the last months on maximising and rationalising car spaces in the village.

We have been asking council for disabled parking in Broughton Road as close as possible to Hampden Road so that people

don't have to trudge up the hill to Hampden Lane at the back. Ideally there would be two spaces on either side at the bottom of Broughton Road.

EV Charging bays are coming to Artarmon, The AVI fully supports EV charging bays and GoGet spaces if they are not taking up parking spaces at the shops. Everyone will find them half a block up the hill or at least in the back lane.

On behalf of the local businesses, we really appreciate your support and loyalty that has seen us through the street upgrade. None of us are rolling in dough just yet but it's early days and it feels like things are turning around.



Follow us on Facebook

@artarmonvillage



Follow us on Instagram

@artarmonvillageinc

Are your medicines working for you?

- Have you recently been discharged from hospital?
- Are you taking several medicines?
- Have you had recent changes to your medicines?
- Do you use devices or require monitoring for your conditions?



A MedsCheck is a **FREE** 30 minute one-on-one review of your medicines with a pharmacist.

It will increase your knowledge and confidence in your medicines and reduce your risk of an avoidable trip to the hospital.

Phone us and book a MedsCheck or Diabetes MedsCheck today on 02 9419 6880

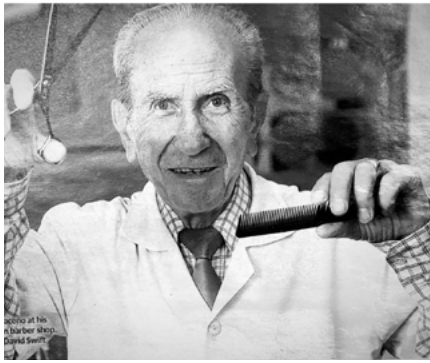
Nick Logan

Pharmacist Advice



We'll sit with you so you understand!

96 Hampden Road, Artarmon
Phone 9419 6880 Fax 9419 6868
Email nloganpa@bigpond.net.au
Web www.pharmacistadvice.com.au



Remembering the barber of Artarmon Felicity Vacchini

Born in April 1936 in Casignana, Calabria, in the far south of Italy, Michele Antonio Saraceno was a young child during World War II. It was in Italy that he became a barber – at the age of 12 years, working after school from 4pm to 8pm.

104 Hampden Road. This is now where Zucchero Caffè Bar and the Black and White Hair & Beauty Salon are – run by Valerio, Mick's son-in-law, and Agatha, respectively.

Mick Saraceno

3 April 1936 - 23 November 2024

Michele Saraceno, well-known and loved as Mick the barber, was driven through Artarmon one last time on Friday 6 December 2024. Many people lined up in front of Zucchero's, the site of his barber's shop, to applaud and make their final goodbye as his cortège went past.

Mick was a fixture in the Artarmon community. As well as cutting the hair of Artarmon men and boys for almost 60 years, Mick was a regular visitor to Artarmon after his retirement. He was often seen enjoying a chat in the sun with his former clients and many friends.

Mick immigrated to Sydney in 1955 following his brother, aunt and cousin to Australia. At age 19, he paid the £240 fare and set off on the 31-day sea voyage on his own, earning some extra cash by giving on-board haircuts. Mick first worked in the city and lived at North Sydney, then moved to Jersey Road, Artarmon in 1963. He was married to Teresa in 1964 at Our Lady of Dolours Catholic Church, Chatswood, and had three children; Maria, Tony and Agatha.

Mick started his own business in 1964 at 90 Hampden Road near the fruit shop run by his brother John and family. In 1988, the barber shop, now also with daughter Agatha's hairdressing business, moved to



In a chat with the Artarmon Gazette in 2014, Mick said he had always been pleased that he moved to Australia and especially to Artarmon. He found Artarmon a very friendly neighbourhood and commented it had been wonderful to know three generations of families in the decades he had worked here. In turn, the Artarmon community has been grateful for Mick's contribution over so many years and will miss him greatly. ●

HYEGROVE

Willoughby

Move into Hyegrove Willoughby in mid 2025 with on-site Care if you need it

Hyegrove Willoughby is currently under construction and will offer 1, 2 and 3 bedroom apartments with 5 star amenities and a world-class retirement lifestyle. Also on-site is HyeCare which will offer Home Care, Permanent Care, Respite Care, Palliative Care and Dementia Care if you ever need it.

www.hyegrove.com.au







Book Your Private Display Suite Appointment | Contact 8045 6894 or email us info@hyegrove.com.au



SPOTLIGHT ON:

Andrew Dowling Founder and Director of Stitch

Jacquelyn Hole

Local social network wins UN prize

Name the unique social network bringing together people with like-minded interests through arrangements made across its website? - It's not Facebook.

The organisation is called Stitch, and it is, in the words of its founder (and local resident) Andrew Dowling, the "very opposite" of Facebook.

Stitch is an online platform for people over 50 that helps connect individuals for the purpose of social engagement, from dancing, attending theatre, participating in social sports, games or discussion groups, dining out, comedy, travel and more.

"Everything we do is about getting older adults together in person, improving their lives through social activities," says Andrew.

Loneliness, Andrew realised, has become one of the largest social ills of our modern age, and he wanted to tackle the issue with a practical solution.

"Being lonely increases your chance of dementia by 31% - there are so many correlations between loneliness, isolation and poor health. There are biomarkers in the bloodstream that can detect whether you've been isolated socially.

"Stitch is a community built to address the needs of people as they age. We tackle social isolation and loneliness by giving people a community that invites them to participate in shared activities."

Unlike Facebook, Stitch enforces high standards.

"At Stitch we have a set of behaviours we expect everyone to comply with, which is being kind, welcoming, friendly, supportive, respectful. And unlike Facebook, these are enforced by our members."

"We don't sell people's information. We don't have advertisers. Stitch is a member-based organisation, it is built by members, who are volunteers. Members pay a fee but if people can't afford that we have assistance programs."

And Stitch is different to Facebook in another crucial way.

"Facebook is built to help you connect with people you already know, or brands you already know, or things you already follow.

"Stitch is the other way around. It's where you can go to meet new people where you can build a new community and have a sense of belonging. You don't belong to Facebook, you just use Facebook. It's just the big corporate behemoth that's trying to suck out all your information."

Andrew and his wife have lived in the Artarmon area for the last 15 years with their three children attending Artarmon Public School. "My wife and I have our favourite local coffee spots, we play sport locally, and many of our closest friends live in the



community so yes you could say we are very connected to the local way of things."

Like many organisations, Stitch took a big hit during Covid.

"We had to rebuild Stitch almost from scratch, with all of us working from home. I spent the last four years working out of my front room in Artarmon."

Now Stitch is stronger than ever with more than 280,000 members around the world, mainly in Australia, the US and the UK and also Canada and New Zealand.

Last year Stitch was recognised by the UN for its positive impact on the well-being of people as they age. Andrew travelled to Geneva to receive the WSIS Healthy Aging Innovation Prize for 2024, a key celebration promoting the UN's Decade of Healthy Aging. ●



Keeping your valuables safe at the beach



The beach is all about sunshine, sand, and relaxation—but there's one little issue: your valuables. Whether it's your phone, car keys or wallet, you're probably wondering what to do with them while you splash in the surf or stretch out in the sun.

Here are a few simple strategies to protect your stuff without becoming a human fortress.

1. Use waterproof gear with zip pockets
2. Invest in a lockbox
3. Use a magnetic key holder for your car
4. Set up near lifeguards or crowds
5. Bury your valuables (safely).

More tips:

www.facebook.com/groups/WilloughbyNeighbourhoodWatch

Demystifying the decluttering journey

Alethea Morison

For me, decluttering was a necessity and a challenge. I wanted my home pleasant to live in now and manageable if I needed to move, or simple if someone else had to deal with the contents of my house. But there's so much stuff! Processing the clutter takes motivation, organisation and knowledge. And getting started is tough.

Once I decided the destination for each item type, I set up stations for them with labelled boxes, bags and baskets, to use day-to-day as the piles were started. (Getting started required a dedicated 3-4 hour session.)

My first resource for disposal destinations was **Willoughby Council's waste and recycling** webpages, which covered sustainable options for unwanted items. Council also offers residents the **RecycleSmart** service. This provides free pick up every 3 months of 2 bags of soft plastics, good and gone clothing and textiles, shoes, books, blister packs, small e-waste, light globes, batteries and more. Extra bags can be booked for \$7.50 each.

For rehoming more stuff faster, there are other services and facilities: the **North Sydney Community Recycling Centre** in Artarmon; **Kimbriki Resource Recovery Centre** at Ingleside (accepts huge range of items free and bicycles for the Bikes4Life charity), charity shops like **Vinnies** and **Lifeline** (clothes and household items in good condition), **Upparel** (clothing and textiles collected for a fee), **Lifeline Book Depots** at West Lindfield and Gordon, **Whirl Recycling** (free pick-up for loads of electronics), **Mobile Muster** (check website for nearby drop-off points), **Household Chemical Cleanouts** (next one is at St Ives Showground

on 24-25 May), animal shelters eg SAFE Rehoming at Roseville (towels), **Marrickville Reverse Garbage** (art, craft and sewing materials) and **Gumtree or Facebook 'Pay it Forward'** groups (any usable stuff including furniture).

There are also shops and businesses now offering recycling eg **Bunnings** for batteries, **Chemist Warehouse** for blister packs and **Sheridan** outlets for 'pre-loved' sheets and towels. Then there's the option of having items repaired for our own reuse, for example at the twice monthly North Sydney **Repair Café** in Lane Cove or the **Fix-it Hub** at the Coal Loader in Waverton.

To help with motivation and organisation and improve my knowledge, I've recently engaged Beverley Scheepers, a graduate in environmental science who runs **Home And Life Organising (HALO)** and is on the Advisory Board of the **Institute of Professional Organisers**. Beverley reminded me that there is no 'away' - when you get rid of things as they have to go somewhere. She sees advantage in working with a professional committed to sustainability once the decision to declutter is made, as these experts have connections and networks to navigate the decluttering journey. Beverley also advised about being mindful and intentional when making purchases: to consider materials and resources used, the product's quality and longevity, and what happens to it when it ceases to be useful.

Things are looking tidier already!



A TO Z OF RECYCLING Willoughby City Council has an excellent recycling resource on their waste and recycling webpage. It lists over 100 items, from ink cartridges to mattresses, wetsuits to yoga mats, and suggests ways to responsibly recycle, rehome or, if not recyclable, where to dispose of your household items.

Time for a home loan health check?

Liberty Adviser Linda Ding provides greater choice with access to a wide range of home loan solutions. Get in touch today for a home loan health check and personalised review of your lending options.



Linda Ding
0424 274 345
Suite 4, 96 Hampden Rd,
Artarmon, NSW 2064



Along with Liberty's full suite of solutions, Linda can also help you compare home loans from a panel of lenders:



Approved applicants only. Lending criteria apply. Linda Ding has access to a panel of lenders through Liberty Network Services Pty Ltd (ABN 65 151 158 628 | Australian Credit Licence 408042) (LNS). LNS may offer products funded by related companies under the Liberty Financial and MoneyPlace brands.

GenZ on eco-anxiety

Lauren Tinyou

In the midst of the climate crisis, young people are often seen as the most eco-friendly generation, which makes it surprising to learn that Gen Z is typically the worst generation at recycling. In fact, it's our parents' generation - Gen X, that recycles the most.

When faced with climate change, young people have varying reactions. On one hand, eco-anxiety, the fear of the climate crisis' impacts, has disproportionately affected younger generations. This is the image of young people usually shown in the media.

Yet, in conversations with family and friends in Artarmon, I've found that a lot of young people have a different perspective. One said, "I'm all for the environment and recycling, but I'm not really sure that it will make a difference." Another commented, "I'm kind of used to the idea of climate change," which reflects a growing sense of desensitisation.

Many young people I know have grown up with climate change as a constant reality. Because of this, some may not take action, not because they don't care, but because they feel uncertain about whether their efforts will make a real difference in something that has been ever present in their lives.

The answer to this problem may lie in the heart of Artarmon's culture as a community motivated by both family and sustainability. As mentioned earlier, Gen X is the best generation at recycling. As parents to young people, they enforce, or should enforce, the



sustainable practice of recycling. When asked about recycling, Hailey, 13, said "my parents make us sort out the recyclable rubbish; it's just routine now."

This shows that in Artarmon, recycling can be family-driven climate action. By promoting sustainability as a shared value, families across Artarmon can empower young people to understand that it's not just about individual actions but about creating a culture of shared responsibility, action and impact.

Unlikely the be all and end all solution, this approach can help young people feel more empowered, reducing the sense of demoralisation that some may feel. When sustainability is viewed as a collective effort, young people may be more motivated to take action, knowing that every effort counts. ●

Snippets

Making soil by composting

There's a bit of an art (and common sense) in making compost, but essentially it's about recycling food waste and making soil. The Artarmon Parklands Community Garden encourages households to bring food scraps to the garden for processing in their compost bins, or there are many small compost bins that can be tucked away in a quiet corner of a home garden, courtyard or balcony. Council is also preparing for the introduction of FOGO. (See Councillor Roussac's column on page 14).



Boats parked illegally

In 2017 the Council endorsed new powers designed to discourage the nuisance caused by long-term parking of unattended registered boat trailers, often caused by people who do not live in the local area. Boats on trailers cannot be parked for a period longer than 28 days on our local streets. If the boat trailer does not move, Council will provide the registered owner with 15 days' notice before impounding the trailer.

Lodge a complaint by email with a date-stamped photo to email@willoughby.nsw.gov.au. Council acts promptly to see the boat is removed.



ELECTRICAL OR ELECTRONIC DEVICES

E-waste can be dropped off, free of charge at the Northern Sydney Community Recycling Centre at 8 Waltham Street, Artarmon. The centre accepts a range of electronic items - from TVs and computers to smaller items with embedded batteries such as vapes and electric toothbrushes. It also takes non-electronic items including paint, gas cylinders and, more recently, wearable textiles, shoes and accessories. Check the Willoughby Council website for opening hours and the full list of items accepted.

MOBILE MUSTER YOUR OLD PHONE

Mobile phones and accessories and other telecommunication e-waste can be recycled safely for free through Mobile Muster's many collection points. The website lists various drop-off points around Artarmon including the Library and all Telstra, Vodaphone and Optus stores. All components are separated and recycled. Nothing is reused or resold. More information can be found on their website.

Sydney | Sotheby's
INTERNATIONAL REALTY

**ARE YOU CONSIDERING
A MOVE IN 2025?**

Have a confidential discussion
with a local expert from a
global network.

 **Nicholas Jones**
Sotheby's International Realty
Lower North Shore

+61 434 679 059
nick.jones@sydney.sir.com
sydneysothebysrealty.com

Artarmon's Book Club Book clubber, Irene



At 4.30pm on the third Thursday of each month, a group of booklovers gather around the table in a corner of the Artarmon library. It is the Artarmon Book Club. Each month we have a book to read and we come together to discuss it.

The benefits of belonging to this club are many and we get to read books which we may not have chosen to read otherwise. It is always interesting.

Anyone can join and contribute to the meeting. It is a nice way to make friends and meet local people.

Another good thing is that someone else chooses the books. It is also a friendly way to become part of the community and interact with people with similar interests. We all share ideas and that is very stimulating. We do not have to buy the books as there are library kits with multiple copies of the titles, so, together with Librarian Wendy, we choose the one we will read that month. Rarely do we all agree so the discussion ranges widely and brings out multiple points of view.

Whatever brought you there in the first place you will soon feel part of the group. Why not give it a try?

Libraries are very special places bursting with ideas and theories, stories and poems and advice of every kind. They are places to be cherished as there is nothing you cannot find out about in a library. There is even a special smell – the mixture of leather, paper and glue mingling. ●

Happy reading



Sharon Williams OAM

Congratulations to Artarmon resident, Sharon Williams who was awarded the Medal of the Order of Australia in this year's Australia Day Awards. Sharon has lived in Artarmon for over 30 years.

Sharon is the founder of Taurus, a marketing and PR company. She is particularly passionate about mentoring and supporting young people and mothers re-entering the workforce through her training and development programs.

As well as being involved in many business organisations, Sharon undertakes extensive pro-bono work and community involvement. These include the children's charity Good Beginnings Australia, the Violet Initiative for people in their last stage of life and their families, the Starlight Children's Foundation, the Breast Cancer Research Foundation and FSHD Global Research Foundation dedicated to finding treatments for Muscular Dystrophy. ●



NETWORK

PLUMBING • ELECTRICAL
AIR CONDITIONING

YOUR NETWORK OF EXPERTS, ONE CALL AWAY

We're here to fix all - **Plumbing, Electrical, and Air Con.** Delivering convenience, quality workmanship & no hidden surprises. With 40 years of dedicated service in Sydney, we stand proud on our legacy of reliability, customer satisfaction and lasting solutions.

LICENSED TRADIE READY FOR DUTY

💧 BLOCKED DRAINS	⚡ INDOOR ELECTRICAL	✨ AIR CON INSTALL
💧 HOT WATER	⚡ OUTDOOR ELECTRICAL	✨ AIR CON SERVICING
💧 ALL PLUMBING	💧 EMERGENCY SERVICES	✨ AIR CON REPAIRS

CALL 8529 4605

✓ 24/7 SERVICE
 ✓ UPFRONT PRICING
 ✓ SAME-DAY SERVICE

This promotion entitles the bearer to \$60 off the next invoice when work is carried out. Not valid on travel fee, work already done or quoted work. Must present promo code at time of service to receive discount.

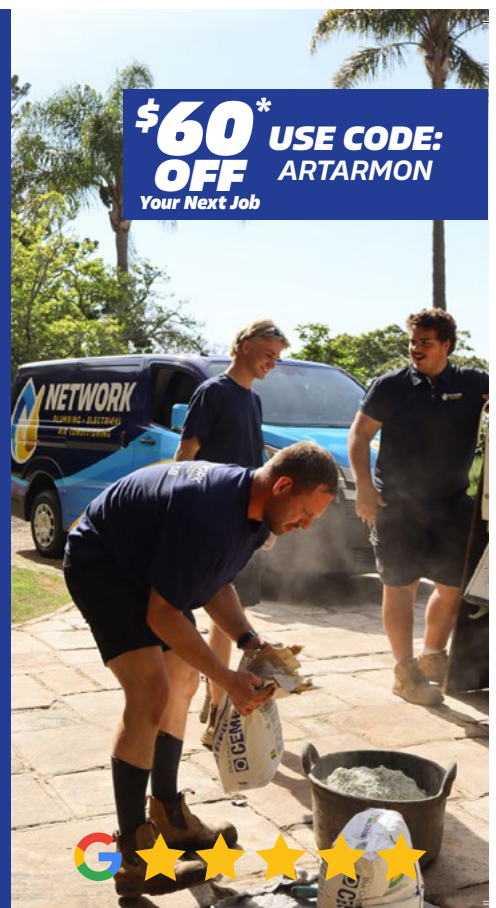
ABN: 20 663 487 536 LIC: 467374C


\$60*

OFF

USE CODE:
ARTARMON

Your Next Job




★★★★★

School's in for 2025

Ann Marie Cahill

You will have noticed the usual signs for the return to school in 2025. Once again there is a sea of royal blue school hats emblazoned with the Artarmon Public School (APS) crest, floating through the village to and from school. The colour is bold, bright, and instantly recognisable. It is consistent across the uniform, the bags, and even the sports jerseys (as seen in the window of Nick Logan Pharmacy, the school's biggest fan). It is also a shared colour to remind the students they are part of a bigger family: the Artarmon family.

There is an increase in traffic during school drop-off and pick-up. Mornings are filled with frenetic energy. Everyone has somewhere to go, and determined to be there. Rainy days are the worst, and are also the days when we all need to exercise a little extra caution. The recent village renovations and upgrades have given extra crossings and pedestrian accessibility, with new drop-off zones moved away from the main thoroughfare of traffic. While the students are regularly reminded to be aware while walking to school, we (the adults—ALL adults) need to share in that



support and be mindful of their presence too. We set the example: cross during green lights, check for cars at the pedestrian crossing, and don't run across the road just because we see 'a gap'.

Thompson Oval has never looked better, thanks to the upgrades over recent years. Artarmon Reserve also remains a welcome area. APS is fortunate to have access to these spaces, allowing the students essential outside time for physical activity and learning.

Most of all, it is the consistent and thus reassuring presence of the school itself.

This year celebrates 115 years since APS first opened. During that time, it grew in size and performance, and it continues to share its spirit with the broader community. Throughout 2025, there will be Open Days, music competitions, school excursions, and (hopefully) the annual Spring Fair. In the meantime there is the regular and comforting presence of small blue school hats and children moving around Artarmon with big smiles and dreams.

Please watch out for them, welcome them, and celebrate their school year with them. It's going to be great! ●

Street Libraries in Artarmon

Jane Cozens

Take a book. Give a book. Share a book.

The street library picture in the December Gazette (Edition 107) sparked some sleuthing. It turns out Artarmon has a number of street libraries, one on the Cordia Way bike track, others in Cameron Avenue, Hampden Road and a new one in Pyrl Road, a family project inspired by the Gazette.

Street libraries are weatherproof boxes full of books that are fixed in a front yard and accessible from the street or found in public spaces. People can take a book they haven't read and add ones they have.

There are many more scattered around the Willoughby LGA. These were an invaluable resource and community engagement during the covid lockdowns when schools and libraries were closed and the numbers increased to over 5000 throughout Australia.

Street Library is a not-for-profit organisation which officially began in New South Wales

in November 2015 with the first library in Newtown and was modelled on Little Free Libraries in the US.

How do you get one?

Street Libraries Australia sells both build-your-own kits or ready-to-paint ones or, for the more ambitious they have a free downloadable plan to make from scratch. www.streetlibrary.org.au

Our own Willoughby Men's Shed will also make you one to order. They have recently replaced the street library on Artarmon Village Green to enhance the newly revamped Hampden Road.

Or why not reclaim, repurpose, or refurbish - use reclaimed materials to make your own or use an old piece of furniture - a TV cabinet, bar fridge or even microwave could be used. "Greta's book club library" on Cameron Avenue was built from an old chest of drawers picked up on a council cleanup.



Willoughby City Council supports street libraries and you do not need council permission to put one in your own yard.

Another great way to recycle!

Exciting year ahead for Girl Guides

Girl Guides across Northern Sydney are gearing up for a jam-packed 2025, with a range of exciting activities and events all building towards the much-anticipated national Bush2Beach Jamboree in the September school holidays.

Artarmon Guides wrapped up 2024 with a relaxing family beach picnic at Northbridge Baths and will start the new year by joining Guides from across Northern Sydney for an urban hike from Artarmon to Barangaroo. This special event celebrates World Thinking

Day, an annual tradition where Girl Guides and Girl Scouts worldwide reflect on their shared values and global connections.

A year of adventure, learning, and leadership

Throughout the year, local Guides will take part in a diverse range of activities, including outdoor adventures, cooking, sports, fundraising, service projects, and camping trips. They'll also work towards interest badges like Space or Healthy Living, engaging in themed meetings designed to develop

valuable life skills while fostering leadership and teamwork.

A major highlight in 2025 will be the national Girl Guides Jamboree, held in Murwillumbah, NSW, during the September school holidays. The Jamboree offers Northern Sydney Guides a fantastic

opportunity to meet interstate peers, form lasting friendships, and deepen their connection to the global Guiding movement.

Get Involved in Girl Guides

Alison Cappetta, Region Manager for Northern Sydney, expressed her excitement for the year ahead.

"We are looking forward to a busy and fun year in 2025, with our Jamboree and several joint Guide and Scout events like the Hornsby Gang Show and Scout Hike," she said.

If you're interested in your daughter joining Girl Guides, visit www.girlguides-nswactnt.org.au or call 1300 447 548 for more information.

Additionally, Girl Guides across Northern Sydney are actively seeking new volunteer leaders to help open more units and expand opportunities for local girls. If you're passionate about making a difference in young lives, visit the website or call to learn more about volunteering. ●



DOGS ON LEASH

In our Council area, dogs are required to be on a leash (regardless of age) except when in a designated leash free area. The closest off-leash areas locally are (except when being used for sport): Artarmon Park (Cnr Parkes Road and Hampden Road), Artarmon Reserve (not the children's play area or community garden space), Naremburn Park (Park Road) and Bales Park (Stanley Street, Chatswood).



QUICK QUIZ answers

1. 1910 (see page 11)
2. 3.5kms one way along Flat Rock Creek
3. 40kph
4. Four (4)
5. Gen X (see page 9)

Whipbirds, heard but not seen

Judi Homewood

One of the treasures of Artarmon is the bushland reserve on the east side. It can be accessed by the walking track that leads from the southern railway subway to Artarmon oval. If you walk along the bush track, which runs parallel with the railway line, you might have heard the call of the eastern whipbird. Pairs of whipbirds establish and defend a stable territory, and are likely monogamous (i.e., mate for life). Their name comes from the distinctive, clear whip crack sound made by the male, typically followed by a "choo choo" reply of the female.

The whip-crack call is an important way that two paired birds keep in contact. This highly synchronised reciprocal vocal interchange is known more generally as antiphonal calling. However, when walking along the bush track you can sometimes hear the other calls of



the whipbird, which are low rasping sounds and chuckles.

Whipbirds are more often heard than seen, for two reasons. They prefer dense vegetation (where they hunt for insects) and because their overall grey green colouration allows them to blend into the undergrowth. If you get a good look at the adult bird, you will see they have white cheek patches and a dark crest. They can be seen along the bush track when they dart from one side to the other. Predation by introduced species is an important threat to many ground-dwelling birds such as eastern whipbirds, which is a reason dog owners are asked to keep their dogs on a lead in the Artarmon bushland reserve. ●



Artarmon GREEN SPACE

The community garden is located on what was previously the upper bowling green of the former Artarmon bowling club. It is surrounded by the superb natural bushland of Artarmon Reserve.

Artarmon Parklands Community Garden

Yuen Yuen Yip

A fruit and vegetable garden over summer pulses with life and growth, and our community garden is no different. Along with the edible harvests, forests and rows of brilliant yellow sunflowers greeted visitors to the garden. Keeping the seedlings and plants watered over summer required dedicated volunteers and the very wet stretches of days were a very welcome change to the very hot and dry spells. Of course, with the heat, wet and humidity, comes the burst of weeds. These persistent and hardy plants, although often detested, can be put to good use. Seedless weeds when removed can be composted or simply used as mulch. Often, where needed, they can be left as a temporary ground cover to keep the soil from drying out. In an effort to keep the garden presentable and the weeds under control, the weeding task is a permanent fixture on the to-do list at every working bee, together with additional sessions when required.

The community garden is, at its roots (pardon the pun), about its members. It is a place where we can connect with each other, share a common interest, and develop new friendships.

Over the summer, we have had several curious volunteers attend to try-before-you-buy, with a few committing and coming on board and becoming members. To celebrate the end of another year, the annual Christmas gathering was held at the end of January instead. It was a very relaxed event, in the cool of the evening where we shared delicious food, conversation and laughter.

It was a glorious sunny day for the inaugural Artarmon Street Fair in November 2024. This community event was the main highlight for the Artarmon Parklands community gardeners. The gardeners spent several months nurturing and preparing plants for sale to raise funds for the community garden.



Plants and seedlings were either grown in the garden or generously donated by members or the community. They included nasturtium, herbs, pineapple sage, succulents, camellias, cactus and jasmine to name a few. The strawberry seedlings were a hit with children, with many a punnet going home with happy smiling faces. The Street Fair had a strong vibe of an active local community and as members of the community garden, we are very lucky to be part of this social fabric that makes Artarmon a very special place to live.

New members are welcome. Contact: ArtarmonCommunityGardensSec@gmail.com

WIN A \$5K SIGNAGE FACELIFT



IS YOUR BUSINESS SIGNAGE
LOOKING TIRED OR OUTDATED?



SCAN THE QR CODE OR ENTER AT

WeMakePossible.com.au

Terms and conditions apply. Major prize must be claimed in a single transaction. Choose from a range of products and services to the value of \$5,000. Plus, lots of other prizes to be won!

We're giving away **\$5,000** worth of our beautifully crafted and lovingly designed **signage** to **five lucky businesses** that need it most.



It's easy to enter - tell us why you need a signage facelift and send us a photo of your tired signage and you could win an upgrade. Nice!



WE MAKE
POSSIBLE

ARTARMON | T: 02 9438 1122

Feedback from our representatives ...

From the mayor



Tanya Taylor

Hello and thank you for the opportunity to provide an update from Council in this autumn edition of the Artarmon Gazette.

Firstly, I want to sincerely thank everyone who has rallied to save the Artarmon Post Office. The potential closure of the post office is a matter of deep concern, as the closure of this vital service would so terribly impact our growing population, local businesses and vulnerable groups. I have personally reached out to Australia Post to stress how crucial it is to retain this essential facility and I will continue to advocate strongly on behalf of our community. Council is committed to working with Australia Post to explore alternative solutions to ensure Artarmon residents and businesses continue to have ready access to postal services.

On a more positive note, it's great to see how last year's streetscape upgrade has made the area safer and more welcoming. I am pleased to report that one of the larger fixes, the terrace seating brickwork, has also recently been repaired and the seating is now ready to be used again. Thank you for your patience as we complete the final touches.

As part of our commitment to sustainability, Willoughby City Council has secured NSW Government funding to expand the number of EV charging locations across our local government area this year. In Artarmon, proposed locations initially included Broughton Road and Elizabeth Street, near the shops. While community feedback showed general support for EV charging in the area, we also heard concerns over limited parking in that area and I can confirm that no chargers will be installed close to the shops. Instead, we are exploring alternative locations further along Broughton Road and on Elizabeth Street to ensure we support sustainable transport while balancing community needs.

Just down the road, Cleland Park is also getting an exciting upgrade, and I want to thank everyone who provided input on the improvement plan. After carefully reviewing

all feedback, this upgrade will include new swings, a carousel, a rocker, a bubbler and a sheltered picnic area, making the playground a more inclusive and accessible space for our local families. Works are well underway, and we expect the playground to be ready for children and families to enjoy in the coming weeks.

Further adding to the vibrancy of our public spaces is the new mural near the station which was unveiled just before Christmas. If you've not already discovered it, I encourage you to take a look at the stunning artwork, which celebrates our wonderful native flora here in Willoughby.

I look forward to keeping you updated on the progress of projects in Artarmon and as always, I encourage you to reach out with any thoughts or concerns. Your feedback is invaluable in shaping our city's future.

Wishing you all a wonderful autumn.

E: Tanya.Taylor@willoughby.nsw.gov.au



Georgie Roussac

By 1 July 2030 all councils in NSW must provide a weekly Food Organics and Garden Organics (FOGO) or Food Organics (FO) collection for households and businesses. The aim is

to halve the amount of organics going to landfill by 2030. There's two key drivers for the NSW Government mandate. Firstly, Greater Sydney's landfill space is expected to run out by 2030 unless urgent action is taken. It is estimated one third of waste thrown away in red bins is food waste. That's about 1.2m tonnes of food waste that goes to landfill each year. Secondly, reducing food waste is one of the most effective ways to reduce greenhouse gas emissions. When food decays in landfill it creates methane, adding to Australia's greenhouse gas emissions. Food waste can also be recycled into nutrient rich compost for farmers to grow food.

Forty-three councils across NSW have already introduced food waste collection. Willoughby's preparations for its food waste service have included a five month trial FO service with neighbouring Councils, review of its current waste collection contracts,

and budgeting for the forecasted \$20m implementation costs. Willoughby and neighbouring councils are also seeking opportunities for a waste transfer facility. One of the key challenges of FOGO/FO for Councils in our region is the need for organic processors. Currently, food organic processors are located at the fringes of metropolitan Sydney or regional NSW. The cost of transport directly to these facilities is untenable and a local transfer facility would significantly reduce this cost.

Post Office: It was wonderful to see the community's passionate and collaborative efforts to save Artarmon Post Office. Many of us joined a rally in early January and have contacted Australia Post's customer service line (30 min+ waiting time!). Like others, I wrote to the Minister for Communications who has asked Australia Post to respond (no response received at the time of writing this article).

E: Georgie.Roussac@willoughby.nsw.gov.au
M: 0459 879 379



Anna Greco

Post Office:

Artarmon residents and businesses were shocked by Australia Post's abrupt decision to close the local post office on 12 March without consultation or warning. This

closure will strip the community of an essential service, leaving thousands without convenient access to postal and banking services. The nearest alternative, 1.79 km away in Chatswood, is neither practical nor accessible. In response, I have worked alongside the Artarmon Progress Association and Artarmon Village to fight back. A petition demanding government intervention gained overwhelming support, with 1,800+ residents signing in just over a week. Losing this post office will significantly impact the community. That's why I am pushing for an urgent solution, including repurposing the former Artarmon Library site on Elizabeth Street.

Artarmon Clubhouse Pavilion: This redevelopment has encountered unexpected

Feedback from our representatives ...

challenges. Key issues include compliance with fire safety regulations, requiring non-combustible materials for external cladding, windows, and doors as per the Building Code of Australia. Additionally, accessibility compliance has necessitated an extra accessible pathway requiring extensive excavation to meet the Disability Discrimination Act 1992.

Further modifications include road and drainage upgrades, enhancements to the commercial kitchen to meet Australian Standards, roof tile and steel replacements, and structural reinforcements due to the building's age. Design updates were necessary to accommodate these changes while ensuring cost-effective, high-quality construction. The Willoughby Local Planning Panel has approved the modifications, with the project now set for completion by 30 June 2025.

I welcome your feedback—please reach out with any concerns or suggestions

E: anna.greco@willoughby.nsw.gov.au
M: 0459 866 064



Nic Wright

challenge decisions that ignore our true needs and values.

At a time when our community is expanding—welcoming new developments and much-needed housing—it is unconscionable to cut off a service that so many of us depend on every day. This post office is not merely a place to send and receive mail but is also a vital hub for financial services, especially now that our local banks have packed up and left.

In my discussions with Australia Post, local council, and community groups, I have made it clear that the alternative locations being proposed are completely unacceptable. They lack the convenient parking, accessibility,


I want to begin by expressing my heartfelt thanks for your overwhelming response regarding the closure of the Artarmon Post Office. It's clear that when we come together, we can

and central location that our current facility provides. Instead of adapting to the growing demands of our neighbourhood, the decision-makers have chosen a solution that shows a complete disregard for the well-being of the very people they are meant to serve.

I urge every one of you to continue contacting Australia Post and demand that they reconsider this reckless move. Let your voices be heard—every phone call, email, and letter reinforces our stance that we will not stand by while an essential service is sacrificed for bureaucratic expediency and misguided redevelopment plans.

Thank you once again for your incredible support and for standing up for our community's interests. I will keep you updated as I continue to fight for a solution that preserves this indispensable local service.

E: nic.wright@willoughby.nsw.gov.au
M: 0481 033 442



SMOOTH CURRENT

ELECTRICAL AND SOLAR


ARE YOU CONSIDERING SOLAR AND BATTERIES?
WE ARE ARTARMON'S TRUSTED SOLAR EXPERTS,
READY TO GUIDE YOU EVERY STEP OF THE WAY.

We specialise in tailoring residential solar systems to reduce your energy bills. We provide solar panels, batteries, hot water systems, EV chargers, and more - bringing sustainable energy solutions right to your doorstep.

Why choose Smooth Current Electrical and Solar?

- **In-House Expertise:** Our skilled, in-house team handle all installations, ensuring superior quality and consistency. (References available upon request.)
- **Seamless Support:** Our experts are with you every step of the way.
- **Built to Last:** Our systems offer durability against Sydney's salty coastal air and unique environmental challenges.
- **Trusted Products:** We use the very best products available, delivering exceptional performance and long-term dependability. All are backed by warranties.

Contact us to arrange a free in-home consultation and explore solutions tailored to your energy needs



1300 730 803

www.scesolar.com.au

SNAP SHOT

ARTARMON

Laing+Simmons
Artarmon

VOL.47

MARKET WRAP UP




The last three months of 2024 saw home values decline by 1.40% across Sydney, the first time values have dropped in more than two years. This decline was notably higher amongst properties in Sydney's 'upper-end' (\$1.78m+), and not as dramatically experienced with homes in the lower quartile. It seems the combination of sustained higher interest rates and cost of living pressures are combining to affect buyer motivation and borrowing capacity. Global uncertainty with the US elections and ongoing conflicts around the world seem to have also added to reduced buyer confidence.

Having said this, reprieve may be in sight with optimism from financial markets predicting a cut to interest rates in the first half of this year, which is much sooner than previously expected.

Despite a shortage of available rental supply in the market, we are seeing a stabilising of rents on the lower north shore, with the growth experienced in spring 2024 levelling out. Cost of living concerns have also led to a sharp decline in demand for higher-priced rentals, with days on market for this type of accommodating extending far beyond that of properties within the median rental range.

In this ever changing market, it is now more crucial than ever to have an experienced local agent on your side involved in selling your property. If you are thinking of selling or are interested in knowing more about the market or your property's worth, please contact our team of experienced agents to see how we can best assist you.

SALES RESULTS FOR SUMMER 2025

STREET ADDRESS				Sale Price	Sale Date
35/7 BROUGHTON ROAD	2	1	1	\$970,000	4-Nov-24
11/248 PACIFIC HIGHWAY	2	1	1	\$681,000	5-Nov-24
805/4 BROUGHTON ROAD	2	1	1	\$1,211,800	6-Nov-24
10/15-17 MILNER ROAD	3	3	1	\$2,150,000	6-Nov-24
19 SMITH ROAD	2	1	2	\$3,410,000	7-Nov-24
7/41-45 BROUGHTON ROAD	3	2	1	\$1,540,000	8-Nov-24
15 COONEY ROAD	4	3	2	\$4,200,000	8-Nov-24
7 WEEDON ROAD	4	2	1	\$4,220,000	9-Nov-24
20A WEEDON ROAD	5	3	2	\$2,960,000	9-Nov-24
8/15-17 MILNER ROAD	3	2	1	\$1,625,000	13-Nov-24
27/2-4 JERSEY ROAD	2	1	1	\$950,000	15-Nov-24
168/421-473 PACIFIC HIGHWAY	3	2	2	\$1,910,000	15-Nov-24
12/2 FRANCIS ROAD	2	1	1	\$1,275,000	16-Nov-24
3/2 PALMER STREET	2	1	1	\$1,525,000	16-Nov-24
10/158-162 HAMPDEN ROAD	1	1	1	\$760,000	21-Nov-24
107 ARTARMON ROAD	5	3	1	\$4,200,000	23-Nov-24
11A/3 JERSEY ROAD	2	2	1	\$1,340,000	23-Nov-24
5 CAMBRIDGE ROAD	4	2	1	\$3,600,000	26-Nov-24
6/32 CLELAND ROAD	2	1	1	\$869,999	29-Nov-24
52/421-473 PACIFIC HIGHWAY	2	2	2	\$980,000	29-Nov-24
4/8-12 CLELAND ROAD	3	2	1	\$1,526,000	5-Dec-24
3 COREE ROAD	4	2	1	\$2,850,000	10-Dec-24
37 SHEPHERD ROAD	3	2	1	\$3,150,000	11-Dec-24
159/421-473 PACIFIC HIGHWAY	3	2	1	\$1,350,000	12-Dec-24
6/19-21 MILNER ROAD	3	2	2	\$1,860,000	13-Dec-24
1/21 ERIC ROAD	1	1	1	\$747,500	17-Dec-24
36/7 BROUGHTON ROAD	2	1	1	\$1,086,000	31-Jan-25

*Data where prices disclosed from the period 01/11/24 – 31/1/25 via RPData.



CATHERINE ONG
PRINCIPAL & AREA EXPERT
0418 672 881



JEREMY ONG
PRINCIPAL & AREA EXPERT
0488 242 508

Happy Chinese New Year!

The Year of the Snake in the Chinese zodiac symbolises wisdom, intuition, and transformation. People born under this sign are often intelligent, strategic, and mysterious. It represents deep thinking, resilience, and the ability to shed the past like a snake sheds its skin, embracing renewal and personal growth.




lsre.com.au/artarmon

		Quantity	Lowest Sale	Highest Sale	Median Value	Average Value
House	2 Beds	1	\$3,410,000	\$3,410,000	\$3,410,000	\$3,410,000
	3 Beds	2	\$1,350,000	\$3,150,000	\$2,250,000	\$2,250,000
Unit / T'house	2 Beds	10	\$681,000	\$1,525,000	\$1,024,000	\$1,087,000
	3 Beds	6	\$1,526,000	\$2,150,000	\$1,742,500	\$1,768,500

SALES SUMMARY FOR SUMMER 2025