

Heavy times on Artarmon Road by Chris Baker

We all look forward to the festive season, and those living on Artarmon Road might enjoy it more than most. The Artarmon Progress Association, in conjunction with residents, has been talking with Willoughby City Council about calming measures on this busy road. These discussions have revealed how heavy the traffic is along this road with only a modest respite during the Christmas-New Year when tradespeople are on holidays.

It may surprise many residents to know that Artarmon Road is weight restricted. A three-tonne limit has been in place for many years and is indicated by a 'no trucks' sign on that road and several side streets. They are not big signs, are sometimes hard to see and truck drivers might be forgiven for missing them.

One resident, sick of the volume of heavy trucks, has been monitoring traffic movements. The statistics are frightening. During much of the year, the daily number of heavy vehicles (probably more than three tonnes when fully loaded) totals 60 to 70. During the holiday period, this figure dropped to 25 to 30.

The three-tonne limit is the maximum permissible weight of a fully laden vehicle, or its gross vehicle mass (GVM). All vehicles are issued a GVM by the manufacturer but not all are fully laden, of course. It may be surprising that a Toyota Hilux's GVM is about three tonnes. So fully laden, a tradesman's ute would be right against the limit. The heavy vehicles clocked on Artarmon Road are commonly much bigger than a Hilux, as shown in the accompanying photograph. Very big trucks with trailers and even B-doubles are not infrequent visitors.

What can be done? According to council rangers, it is difficult to prosecute these violations. As we understand it, council



A large truck and trailer at the roundabout on the corner of Smith and Artarmon Roads.

rangers do flag down individual trucks and check their delivery addresses. But this is time consuming. A timed camera system at both ends of Artarmon Road has been suggested. As with speed cameras, a few successful prosecutions might deter others. The maximum fine is about \$200.

This is not to say all heavy vehicles that use the road system in Artarmon are doing so illegally. There is plenty of building activity going on within the suburb and there are lots of courier deliveries. These are fine. However, it is not fine for heavy vehicles from any of the major building projects around Artarmon and Willoughby to use Artarmon Road.

The APA and residents will continue to lobby the council about traffic matters that affect our quiet suburb. Naremburn ward councillor Georgie Roussac is very aware of Artarmon's traffic issues and has been advocating for change. She has coordinated an onsite

meeting with the council and a number of potential remedies has emerged.

'No trucks' signs are located at both ends of Artarmon Road (Willoughby Road and Elizabeth Street) but perhaps they need to be more obvious so truck drivers can see them before turning. We have received feedback that in the council's view timed cameras are not the solution as it would be difficult to identify the miscreants, and even more

Continued page 2

Inside this issue

Editorial	p2
From the President	p3
Spotlight	p5
History	p7
Obituary	p8
Have your say RNSH	p9
Artarmon Village	p10
Your representatives	p12-13

supporting the Artarmon community spirit

The Artarmon Gazette is published quarterly by the Artarmon Progress Association. It is distributed by volunteers, free of charge to Artarmon residents and businesses.

The Artarmon Gazette seeks to inform residents and business people about current local events and issues and discusses matters of interest and concern.

Written contributions and photographs are welcome. Please submit all non-advertising material to the editor. We accept material via email. Editing may be necessary for style, space or layout considerations.

Views and opinions expressed in the Artarmon Gazette are not necessarily those of the Artarmon Progress Association or its members. Although all care is taken for accuracy, no responsibility can be taken by the association, editor, designer or printer.

Publisher	Glenda Hewitt publisher@artarmonprogress.org.au
Editor	Winsome Byrne editor@artarmonprogress.org.au
Advertising	advertise@artarmonprogress.org.au
Coordination	David Roberts
Distribution	Judy Simpson
Design/	Meredith Shimmin
Production	meredith@shimmin.com.au
Printing	The Print Facility RAnge@theprintfacility.com.au
Print Run	5,300 copies
Address	PO Box 540 Artarmon 1570
Website	www.artarmonprogress.org.au/Gazette

Published by:

Artarmon Progress Association

ABN 77 319 108 019

Since 1906

The APA committee meets at 7.40pm on the 1st Wednesday of the month, excluding January. Public welcome.

Venue:

**Artarmon Community Hall,
139 Artarmon Road, Artarmon**

PO Box 540 Artarmon NSW 1570
sec@artarmonprogress.org.au
www.artarmonprogress.org.au

President	Glenda Hewitt
Vice President	Chris Baker
Treasurer	Adrian Alexander
Secretary	Daniel Rasins
Traffic & Parking	Chris Baker
Federation	Judy Simpson Mary Ann Irvin Glenda Hewitt
Membership	Glenda Hewitt
Heritage & History Project	Adrian Alexander
DAs and Council Liaison	Plamen Bassarov

NEXT EDITION DEADLINES

Wed May 1 Copy & advertising due
Sun June 2 Delivery complete

© Artarmon Progress Association, 2020.

No material may be reproduced by any means without the permission of the Editor.

Editorial

Another new year and another set of meaty issues for the Artarmon Progress Association to assess and grapple with. One of the most frustrating is the increase in traffic in Artarmon. Among the biggest causes is the number of large trucks on our streets (page 1).

We'll all be pleased to see the finish of the Hampden Road street works and, while probably none of our businesses has come through unscathed, it is good that most of them are still trading. This is partly due to the Love Your Locals campaign encouraging all of us to shop locally.

I am very happy to report that along with a fancy streetscape, we will have a new street library, which the council has agreed to pay for. The old one was much loved and well used but after more than six years was starting to look a bit tired and not nearly smart enough for our refurbished streetscape.

Artarmon has an impressive array of people who have worked hard for the community and one such is Bob Taffel, who is our Spotlight subject in this issue. Judy Simpson's profile is on page 5.

Another was Keith Anderson, who has been a stalwart of Artarmon for many years. He died just before Christmas. His obituary, by Georgie Roussac, is on page 8.

The release of another master plan for Royal North Shore Hospital has caused considerable consternation. You can read more about it on page 9.

In the History page, Adrian Alexander has profiled Charles Wickham, for whom there are no fewer than three memorials in Artarmon. He has also lent his name to a park in White Street.

We're all concerned about cyber security these days and Neighbourhood Watch has discovered some new traps we need to avoid. See page 15.

Winsome Byrne – Editor

Heavy times on Artarmon Road

From page 1

difficult to bring them to court. More rigorous enforcement by council rangers seems the most obvious solution and we look forward to a greater presence, especially on Artarmon Road.

Since we began compiling this article, we've heard that council rangers have been deployed on Artarmon Road and that prosecutions have occurred. The rangers say

that quite a number of the bigger vehicles are transporting goods within the suburb.

If residents do see repeat offenders, they are urged to take photographs, record the truck's registration, and report the issue to council rangers. Do not approach the truck drivers.

The council can be contacted at email@willoughby.nsw.gov.au and mark your message: Attention rangers.

APA Public Information Meeting

Please join us at our

PUBLIC INFORMATION MEETING

Better Artarmon Streets – then, now and soon

Speaker: John McNeil

John is secretary of Better Streets, the peak body for improving Australia's streets. John and his wife have returned to Australia after 40 years in the US to retire and be near their grandchildren. Both are engineering graduates from the University of Newcastle.

When: Wednesday 13 March 7.45 - 9pm

Where: Artarmon Library Hall, 139 Artarmon Road

A note from the President



After two terms of diligently serving the Artarmon community as president of the Artarmon Progress Association, Kesh Anand has handed over

the baton and I would like to thank him for his humour, energy, contribution and leadership. Being president and representing 2064 residents is an enormous responsibility and Kesh undertook this task in addition to his work and family responsibilities with gusto, especially in building connections with Artarmon Public School. On behalf of Artarmon, thank you Kesh.

With some sadness, the APA committee says goodbye to stalwart committee member Michael Dawes. After many years Michael is stepping aside from his role as vice president. Before taking on that role, Michael was an APA president so his legacy will live on for many years. Michael is one of the people who, with Georgie Roussac, initiated and drove the Love Your Locals campaign, which he continues to support. He has fought for many positive changes in Artarmon and

his local knowledge has been a valuable resource. He leaves a strong legacy.

And more changes. The amazingly efficient, irrepressible, Mai Mullins has taken on extra study alongside her demanding day job so she too has decided to step down from the role of APA secretary. Trooper that she is, her handover to new secretary, Daniel Rasins, has been seamless.

In addition to welcoming Dan to the APA, a big thank you to the new committee members who have filled some of the vacancies: Judi Homewood, Chris Baker and Rosemary Townsend. I look forward to working with them and the ongoing committee members, Judy Simpson, Plamen Bassarov, Winsome Byrne, David Roberts, Peter Wang, Mary Ann Irvin and Adrian Alexander over my term as president. Thank you all. Our community is stronger for your representation.

As I am passionate about strong, resilient, integrated, active communities, I will do my best to work for the Artarmon community to achieve good changes for the future. We are, after all, the progress association.

As 2024 gets under way, there are already a number of key issues that need to be monitored: the ongoing street works in Hampden Road, the Artarmon Parklands Pavilion renovation, the possible loss of the post office, increased traffic movements in the suburb and, yet again, a new master

plan for Royal North Shore Hospital land that puts future clinical services at risk. We are also watching carefully to see how the state government's planning proposals play out.

Anyone who has lived in Artarmon for a while will be saddened to hear of the death of Keith Anderson on 23 December 2023. Keith was amazing. He had an incisive mind and a dedication to Artarmon that is hard to quantify. I worked with Keith on the APA many years ago and was in awe of his attention to detail. Vale Keith Anderson. Artarmon has many things, over many years, to thank you for. My condolences to your family and loved ones. Keith, your legacy lives on.

Glenda Hewitt – President APA

Follow us on Facebook

 <https://www.facebook.com/ArtarmonPA>

Artarmon Library
Opening Hours

Monday:	10am - 2pm
Tuesday,	2pm - 5pm
Thursday:	2pm - 8pm
Friday:	2pm - 5pm
Saturday:	10am - 1pm

WILLOUGHBY CITY COUNCIL



CHEF'S ARMOURY

Just opened - 13 Elizabeth St Artarmon. Japanese knives & cookware. Tue - Sat 10am - 4:30pm

Fresh start for APS students in 2024

by Ann-Marie Cahill



Renovation work at Thomson Park Oval

Once again, the playground at Artarmon Public School (APS) is filled with children. The school has now settled into its new routine, with a sea of blue broad-brimmed hats moving in, out, and around the Artarmon area.

Often, you would see an overflow of blue hats on the nearby oval during lunch and morning tea. However, there is a slight difference this year: Thomson Park Oval is being renovated.

The upgrade includes resurfacing the synthetic grass surface and installing a new synthetic jogging track around the perimeter. There will also be a new tiered sandstone seating area. Further details are provided on the Willoughby City Council website, as well

as via the signage around the oval. Students and families may have noticed the work starting at the end of the summer school holidays. It is predicted to continue through to May. During this time, access to park facilities has been limited. The pavilion, picnic area and playground area are still accessible to the general public. Access to the basketball court, cricket net, and synthetic surface is significantly limited. Unfortunately, these are the areas that directly affect APS students.

For many years, Thomson Park has been shared with APS students for use during school time. Not only is it a great open space for personal development, health and physical education (PDHPE), but a vital area

to allow students to spread out during lunch/recess breaks and burn off some energy. While the APS executive is doing an excellent job managing the smaller space within the school grounds to cater for all students, the oval is sorely missed, especially during the warmer months when kids are happy to run around outside.

Despite the temporary setback, APS students will continue to find ways to stay fit and active during school hours. The school Twilight Swimming Carnival was held in mid-February, with a strong selection of students heading to zone events. The NSW Primary Schools Sports Association (PSSA) Gala kicks off on 8 March, and we are sure to see Nick Logan display his honorary jersey in the front window throughout the school year.

The APS principal, Jono Coombes (inset) is confident for the year ahead. 'I am beyond excited about 2024, to see all our students walk through the gate and love where they learn. I am also grateful to our parents and the entire school community for their support of our school. I can't wait to see everyone come together at school events as a community to help our students reach their full potential.'

Or, as he said so well on the first day back: 'Artarmon Public School is going to SMASH it!' Encouraging words from an energetic principal to his equally energetic students.

Meet your local lending expert

- ▲ Home loans
- ▲ Car loans

- ▲ SMSF loans
- ▲ Personal loans

- ▲ Business loans
- ▲ Commercial loans

Liberty
Loans for free thinkers

Linda Ding
0424 274 345
lding@libertynetwork.com.au
liberty.com.au/linda-ding

Along with Liberty's full suite of solutions, Linda can also help you compare home loans from a panel of lenders:



Approved applicants only. Lending criteria apply. Linda Ding has access to a panel of lenders through Liberty Network Services Pty Ltd (ABN 65 151 158 628 | Australian Credit Licence 408042) (LNS). LNS may offer products funded by related companies under the Liberty Financial and MoneyPlace brands.

SPOTLIGHT ON:

Bob Taffel

by Judy Simpson

*On his long and healthy life, Bob says simply:
'Genetics. Just the luck of the draw.'*



Bob Taffel

The biggest community issue Bob Taffel has been involved with was the campaign against overdevelopment of the former Channel 9 site. He first learnt about it in 2010 when a note appeared in his letterbox saying Channel 9 was selling its land and had lodged a proposal for a residential development with about 663 apartments in buildings up to 18 storeys. The leaflet claimed it would create record density for a Sydney development at 457 dwellings per hectare.

Bob joined Peter Wilton, convenor of the Willoughby Area Action Group and later APA president, to lead a concerted community campaign against the proposal, with the support of the state MP, Willoughby City Council mayor and several councillors. In 2015 the state government approved a modified concept plan with 400 units and a maximum of eight storeys.

But then Channel 9 sold the site and the new owners applied to increase the building height by 50% and the number of units by 24%. After further community action, and another change of owners to Mirvac, the development now comprises 442 units in 10 buildings of up to nine storeys. Bob says the council regards this as a textbook example of a council working together with the community.

Bob first became involved in community participation affairs when he retired in 2000. His kayaking friend, Barry Thompson, was on the council and encouraged Bob to join the Willoughby South Progress Association,

which needed new members. His house was in Willoughby then, before the boundaries changed it to Artarmon. Bob soon became editor of their newsletter, The 272, and kept it going for 'a lot of years!' while also taking on the role of president for a period. Now he concentrates on leading a fortnightly bushcare group in Artarmon Reserve.

Born in England to an English father and Dutch mother, Bob migrated to Australia in 1941 at the age of three. At first they lived in a guesthouse in Parramatta opposite a park that contained a small zoo. So he saw his first kangaroos and emus by looking across the road through the fence. Shortly they moved to Turramurra, then to Gordon next door to his mother's Dutch friend, whose family had been moved to Australia from Java because of the war-time threat from Japan. He grew up in that house in Gordon, backing onto a bush reserve and attended Artarmon Public School and North Sydney Boys High School.

After completing an advanced certificate course in mechanical engineering, Bob got a job with General Motors Holden. In 1963 he married Sue, and they were soon travelling to the US on a GM overseas scholarship plan as part of Bob's training. They lived nearly 100 kilometres north of Detroit, in Flint, Michigan, a GM factory town. In 1964 the car

industry was at its peak and couldn't make enough Chevrolets and Buicks. Although Sue was a trained high-school teacher, state laws prevented her teaching, so she worked in a real estate firm and became the property manager. The Taffels really enjoyed that time and 'looked back on it as a two-year honeymoon'.

After they returned to Australia, Sue's father subdivided his land so they could build the house in which they raised their two daughters, Jacqui and Mia, who both went to Artarmon Public School, then North Sydney Girls High School, where Sue taught German. Bob worked in air conditioning but when the building boom slumped they decided to spend another two years working and travelling overseas, this time in Germany.

Throughout his life Bob has been keen on outdoor sports, including cycling, bushwalking and kayaking, which he continues to this day. Even a knee replacement last year set him back only briefly until he could bend it enough to get into a kayak. And he aced his first older driver licence test last year, both car and motorcycle.

When asked what he attributes his long and healthy life, he says simply: 'Genetics. Just the luck of the draw.'



Channel 9 campaign from page p1 of the Artarmon Gazette, June 2016 / Photo: Peter Wilton

The community garden is located on what was previously the upper bowling green of the former Artarmon bowling club. It is surrounded by the superb natural bushland of Artarmon Reserve.



Sunflowers thrive among the vegetables

Strategies to cope with summer

by Yuen Yuen Yip

With warnings of an impending hot, dry summer, the community garden volunteers readied the garden with various strategies to keep the soil moist over the December-February period.

To complement the terracotta ollas (pronounced oi-ya) installed mid last year, five extra wicking beds were built towards the end of 2023. Plastic hose fittings were replaced with more durable brass connectors to minimise leaks, and a small army of volunteers were rostered for watering duties. Summer did come but the expected heat and dry did not. Nevertheless, the garden is now more water wise.

The December-January period was one of ground preparation and planning. The humidity, heat and rain have the weeds in full flourish and it took the effort of every volunteer gardener to keep them under control. Two sections of the garden were cleared and sowed with green manure seeds. These are sown specifically to improve soil quality. They are tilled back into the earth just before flowering and left to compost in the ground for another few weeks. This method prepares the soil for the later sowing of more productive crops.

The extension to the shed, completed in October, has provided much needed extra workspace, an area for the storage of tools and shade for seedlings and potted plants waiting to be transplanted into the prepared ground.

The 'three sisters' companion planting method has been implemented to maximise the yield of the crops. Rather than use chemical fertilisers and pesticides, this ancient Native American technique calls for carefully selected plants to be grown together to provide benefits and protection to one another. For example, when corn, beans and squash are grown together in a plot, the corn provides a structure on which the beans can climb. This in turn strengthens the stalk of the corn plant to carry future heavy cobs. The climbing beans transmit nitrogen from the air into the soil, naturally fertilising the corn and squash. The large squash leaves provide shade to the ground, keeping the soil moist and suppressing weeds, and the tough squash leaves protect the delicate stems of the beans, keeping out pests.

The brush turkeys have continued to share some of the harvest despite our implementation of defence strategies such as teddy bears, netting, fencing around crops,

and bamboo poles laid criss-cross over plants. Regardless, the collective effort of the volunteer team was rewarded with a good harvest and delicious produce.

Finally, the Christmas party was a relaxed event where friends and family of the volunteer gardeners gathered for an evening of conversation, fun and feasting on homemade dishes. It was wonderful to see this community come together to celebrate another year of gardening and friendship. Coming into the fifth year of community gardening in Artarmon, we look forward to keeping the garden a place of joy, both for the volunteer gardeners and for those who just come by to experience the space.

Award for APA president



The APA president, Glenda Hewitt, has received the 2024 Willoughby Cultural and Community Building Award for helping to develop or foster cultural and community connections within Willoughby.

Glenda is the non-executive director of The Housing Connection in Chatswood, which supports adults with intellectual and other disabilities and helps them to live valued and rewarding lives. She is also a justice of the peace at Artarmon library and secretary of the Artarmon Parklands Community Garden.

Congratulations Glenda!

Cycling matters

by Mary Ann Irvin

There is now secure bike parking at Artarmon station. There are eight lockers in Elizabeth Street. You can rent a locker for three, six, nine or 12 calendar months. The charges are:

- \$50 for three months
- \$100 for six
- \$150 for nine
- \$180 for 12.

To rent one, you need to set up an account with Transport for NSW <https://bikelocker.transport.nsw.gov.au/>. If a locker is available, you will be able to click on 'Hire locker', choose the hire period and pay using a credit card. At the end of each rental period TfNSW will remind you to renew.

What we really need in Artarmon is a bicycle shed, such as the one below. These enclosed shelters store between 12 and 55 bicycles, are free and are accessed with your Opal card. There is space for one of these in Elizabeth Street.



Artarmon History Project update Part 9

Charles Henry Wickham (1869-1936)

by Adrian Alexander

There are three memorials in Artarmon celebrating the volunteer work of Charles Wickham – a monument on the Village Green, Wickham Park in White Street, and Wickham Walk track through the Artarmon Reserve to Artarmon Oval.

The man

Wickham was born in Paddington in 1869. He married Florence Scarr in 1899. They had two children. The Wickhams were early residents of the newly developed Killara where they lived for 25 years. In 1926, Charles Wickham bought 'Wychwood', a new house on Burra Road that backed onto Artarmon Reserve.

Wickham was an architect but because of ill health had to retire early.

The gardener

Since 1906 Artarmon residents have been willing to volunteer their services to the community, particularly through the Artarmon Progress Association (APA). Some residents have been more active than others and deserve recognition for their contributions. Wickham was one such resident.

Artarmon railway gardens in Hampden Road were established in 1928 by the APA and were managed by Wickham. He had experience in

creating gardens at Killara station. Wickham took up the challenge to design and manage the Artarmon gardens from 1928 until he died in 1936.

The gardens were financed by regular subscriptions from more than 750 Artarmon residents. Wickham did house calls to collect regular contributions from residents. In his 1934 annual report, he announced that £1,350 had been collected and disbursed over the previous six years. A great achievement given the economic circumstances of the time. These subscriptions enabled two men to be employed for the equivalent of eight days work a week during the Great Depression when there was very high unemployment.

By 1934, the gardens were maintained on both sides of the railway line and covered more than 2.5 acres (1.01ha). The gardens regularly won prizes in railway station garden competitions, including first place in 1937. The area on the western side of the railway line eventually became known as the Artarmon Village Green.

Wickham died in 1936 and without a qualified replacement manager for the gardens it became a struggle for the APA to maintain the gardens. Willoughby Council generously provided manpower to support the APA's efforts. The council took full management control of the gardens on the western side in 1941 after formally leasing the Village Green from the railway commissioner. It still leases and maintains the Village Green. The APA maintained the eastern side gardens until 1942 when water restrictions, limited finance and lack of manpower due to World War II led to its withdrawal from the project. Many of the existing trees on the eastern side were planted during the APA's management of this area.

Village Green Drinking Fountain

In 1938, the APA raised £80 by public subscription to finance a Charles Wickham



Charles Wickham c1933. (Source not known)

Drinking Fountain Memorial on the Village Green.

At the dedication ceremony, the then federal member William Morris (Billy) Hughes, former minister for external affairs and prime minister, said: 'Man is seen at his best when he is working for the welfare of his fellows. He may be a good husband and good father but something more is required of him – he is expected to be a good citizen. Mr Wickham measured up to this requirement. His sense of civic responsibility found expression in a beautiful way.'

The memorial has been retained within the newly renovated southern section of the Village Green.

Wickham Walk track

The council created an Artarmon Reserve local committee in the late 1920s and asked the APA to nominate residents for its membership. Wickham was one the APA's nominees.

In 1937, the APA submitted plans to the council to develop 'Wickham Walk' track within Artarmon Reserve to enable residents to walk through the reserve from the southern railway subway to Artarmon Oval. This track is well used today.

Wickham Park

Wickham Park in White Street, named after Wickham, was created in the 1980s in response to an increase in apartment living in west Artarmon and the need for playgrounds.

history@artarmonprogress.org.au



Wickham Memorial Fountain (022APA)



Keith Anderson receiving his Citizen of the Year Award

OBITUARY

Remembering Keith Stuart Anderson

20 August 1934 – 23 December 2023

by Geogie Roussac

So many in the Artarmon and wider north shore community have known and will miss Keith Anderson, a remarkable man who died on December 23, 2023.

Keith was born on August 20, 1934. His years at North Sydney Primary School, now known as North Sydney Demonstration School, spanned World War II (1939-1945). He remembered practising sheltering during air-raid drills with his classmates and inter-class competitions to raise funds for the war.



Keith Anderson with the former Willoughby mayor Pat Reilly

Keith then attended Naremburn Intermediate High School and North Sydney Boys High School, where he excelled academically and on the sports field, particularly in hockey.

Growing up in Waverton, Keith was industrious from a young age and worked with a doll maker dipping the limbs in paint. He also was a great help to his parents in bringing up his younger brother Doug. Keith saved up for his first bicycle which took

him all over Sydney, venturing as far as the Hawkesbury River and Palm Beach. Keith loved swimming and regularly visited the tidal swimming pool at Balls Head and the Olympic Pool at Milsons Point.

As a young man, Keith immersed himself in various activities from scouting to model trains (a love that's rubbed off on his grandsons), coins and the arts – theatre, opera and orchestral music – a passion he shared with his wife Annette.

Keith and Annette Gillespie met on the tennis courts in St Leonards in 1955 and were married for nearly 60 years. In 1964, they bought a home in Artarmon where they raised their children, Roslyn and Geoffrey.

Keith's professional journey in banking spanned 42 years, taking him across NSW and eventually to Papua New Guinea, Victoria and Western Australia. He was well regarded in the industry and was known for his expertise as a lending specialist and problem solver.

Keith's commitment to community service was unwavering. He played a pivotal role in the Artarmon Progress Association (APA), serving as vice president from 1998 to 2001 and as president from 2001 to 2004. His advocacy on various issues, from the Lane Cove Tunnel project to developments in the Artarmon industrial area, showcased his dedication to the betterment of Artarmon. Keith continued as an active member of the APA, regularly delivering copies of the Artarmon Gazette to households and

businesses and contributing ideas and views on community issues.

Beyond Artarmon, Keith volunteered for more than 25 years with the Royal North Shore Hospital ladies committee, known as the Pink Ladies. Keith made wonderful friendships and his contributions helped raise millions of dollars for medical equipment.

In 2021, Keith was honoured as Willoughby City Council's Citizen of the Year, a testament to his enduring impact on the community. The award recognises community members who have, through long-term residency and continuous involvement, made a significant difference and contribution to the well-being of the community through personal service.

Keith lived a full life marked by service, love and a commitment to making the world a better place. I loved Keith's energy (he continued to run well into his 70s) and curiosity. I learnt a lot from Keith and was grateful for his insight and wisdom.

Keith's wonderful family will miss him dearly: his wife Annette, children Roslyn and Geoffrey, their spouses Peter and Martina, and grandsons Matthew, Benjamin and Ryan.

artarmon framing

Custom framing

Mounting
Laminating
Artwork Hanging Systems
Canvas Stretching
Mirrors
Conservation Framing
Art Restoration
Advice and Help with
Presentation & Conservation
of Most Things

Andrew Fortescue
94a Reserve Road, Artarmon
Ph: 9439 9992

9.00 -4.30 Mon -Fri • 10.00 -2.00 Sat

RNSH HAVE YOUR SAY

Council acts over 2023 hospital plan by Winsome Byrne

Major concerns remain about government plans to redevelop land belonging to Royal North Shore Hospital.

Willoughby City Council says it had no input into the 40-year plan for the redevelopment of the southern (Herbert Street) side of the hospital, released by the Northern Sydney Local Health District in October, despite its relating to council-managed land. It has therefore written to state government ministers to request briefings as soon as possible.

The letters, from the mayor Tanya Taylor to the premier, treasurer and ministers for health and planning, request briefings be held onsite for the surrounding community and clinicians and that they be scheduled and advertised to allow as many people as possible to attend. The community and clinicians should be able to provide input and feedback.

The letters, sent at the end of January after the council resumed, follow a motion that councillors Georgie Roussac and Robert Samuel took to the council at its November meeting. They also request briefings for council staff and councillors.

The motion from councillors Roussac and Samuel says the council's recently approved Local Environment Plan has enough capacity

to provide affordable/key worker housing, integrated and private health services without relying on hospital land, or land adjacent to it. It says: 'Key worker housing and residential development are critical, however, should not be built on hospital land.'

For many years, there have been concerns among residents, some clinical staff and the Willoughby, Lane Cove and North Sydney councils that government plans to redevelop the campus will ignore the need for the land to be preserved for patient-related public health care.

Considering the projected growth of the area and the ageing population, demands on the hospital's services will only increase.

RNSH anaesthetist Greg Purcell writes:

The guiding principles of the latest campus plan have little regard for the immediate and long-term population increase and ageing of the community.

RNSH has been at maximum capacity for far too long and navigating this dysfunction on a daily basis overwhelms staff and affects the care patients, particularly the aged, receive. This in turn causes personal emotional distress to the staff, burnout and disengagement.

When the new hospital opened in 2012, fewer than 25 per cent of adult patients were in single-bed rooms. The number of acute care beds for adults was inadequate and mixed gender shared rooms were inevitable.

What the plan should do is:

- Increase the clinical capacity of the campus, particularly to cater for population growth and the expanding needs of the Crows Nest, St Leonards, Chatswood and North Sydney areas.
- Remove ambulatory/outpatient care from the acute care building and move it closer to St Leonard's station, bus transport and the new Metro.
- Refurbish the 'hole in the ground' that was the Brown Building and make it useful and appealing for the community and staff.
- Plan for a new 'state of the art' major academic health centre that enables world-class clinical care, teaching and research.



What the master plan does by Michael Dawes

- Shows four options to expand the hospital.
- Based on the preferred option, provides a 40-year plan to guide its redevelopment, dividing the campus into nine sites and broadly identifying the potential uses for each. Exactly what these usage terms mean is unclear.
- Claims to meet current and future clinical requirements, but it has been prepared without a long-term clinical services plan.
- Reveals that the vacant land near St Leonards station next to the 1 Reserve Rd Building has been sold to PDNSW, the central property agency for the state

government, with plans for a tower with 29 levels of diverse accommodation and a medi-hotel on top of a four-level podium for retail/commercial use.

- Proposes to leverage the PDNSW building to erect an adjoining construction with a similar retail/commercial podium and a tower of nine levels for another medi-hotel, diverse accommodation, allied health, education and research.
- In the short term, expand clinical facilities and car parking with a new building in part of the demolished Brown Building site and a new building at the corner of Herbert and Westbourne streets.

- In the mid-term (11-25 years), further expand on the rest of the Brown Building site and build a third retail/commercial podium and tower for diverse accommodation, allied health, education and research.
- In the long term (26-40 years), further expand clinical services where the Douglas building and adjoining car park are and put another podium/tower in place of the current Community Health Building. At this point, improved pedestrian access to the main hospital will be achieved.

Email what you think about the proposed redevelopment to sec@artarmonprogress.org.au or editor@artarmonprogress.org.au.

Artarmon Village



We're nearly there

by Nick Logan, President, Artarmon Village Inc

Please offer these new AVI members a big Artarmon welcome.

- Island Hopper Brewery (Aziz Tan). At last, our own icy cold Artarmon beers! You can taste them at Salvage Specialty Coffee on Fridays from 5pm.
- Chef's Armoury in Elizabeth Street (Leigh and Stephanie Hudson). World class Japanese knives and barbecues.

In January, it was very sad to farewell our long-term AVI members Sunny and Bill from Artarmon Newsagency. They have sold the business and are taking a rest with a few well-earned holidays for the moment.

At our AGM before Christmas, Artarmon Village businesses were relatively positive about the Hampden Road upgrade. The general feeling was that we had survived the

road works and it would be a downhill run until completion in May.

Unfortunately, a few deadlines have been missed. The balustrade on the traffic lights block was not completed before Christmas and the new public toilet was not completed by 31 January.

The noise, mess and lack of parking peaked in January/February and at the time of writing it is hard to perceive significant progress.

It is a shame that after our 'once in 50 years' upgrade, the ugly bent power poles and shabby old façade will remain on Hampden Road.

Try to remember, the wide, boulevard-style footpaths will one day be attractive and enticing to the community and we will be proud of our suburb again.

Stay tuned for some reopening events to which all the workers and residents in the area will be enthusiastically welcomed.

On behalf of the Artarmon businesses, I can't thank you enough for your support during this tough time and hope that you can brave the chaos and maintain your village rage for a few more months.

Don't forget to brandish your 'Love Your Locals' card. There's a winner every Saturday morning.



Check out our website at <https://www.artarmonvillage.com.au/>.

- Don't forget to check us out at
- Instagram @artarmonvillageinc
 - Facebook @artarmonvillage
 - And our new website, [artarmonvillage.com.au](https://www.artarmonvillage.com.au).



Does managing your medicines feel like a burden?

Make taking your medicine simple and easy:

- Ask our pharmacists about blister packing and rest easy knowing that you have everything you require in a secure organised pack.
- Blister packing reduces your chances of missing or accidentally double dosing.
- Our packs are portable and discreet and make taking your medicine while travelling a breeze.
- Maintain your peace of mind with an easy pack that you control and never run out of tablets or miss doses again.
- We can even organise weekly deliveries.



Nick Logan

Pharmacist Advice



We'll sit with you so you understand!

96 Hampden Road, Artarmon
Phone 9419 6880 Fax 9419 6868
Email nloganpa@bigpond.net.au
Web www.pharmacistadvice.com.au



a sign here like this one I snapped in Brooklyn recently.



But we've had some more unusual visitors recently. There I was trimming my front hedge one October afternoon when a beautiful full-size swamp wallaby went bounding eastward down the middle of Artarmon Road! Luckily the traffic stopped to have a look, the wallaby turned right at the roundabout and sat in the middle of the right lane for a little while in front of a 4WD. Friends in Cameron Avenue reported sightings, too.

and obligingly posed for a photo in front of some hydrangeas. A friend who lives nearby commented that she had a lot of frogs in her garden which the heron might be getting fat on. Herons usually feed in shallow water but there's been a lot of that around during the past few La Niña years. Early one morning a couple of years ago, I saw five of them feeding in the sodden grassy field on the western edge of Flat Rock Gully Reserve.



The full-size swamp wallaby that bounded down Artarmon Road

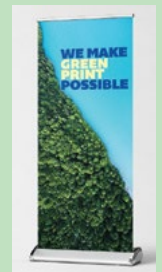
Wildlife in our suburb

by Judy Simpson and Kate Lamb

Residents who live near Artarmon Reserve usually learn to love – or at least to live with – those pesky possums and brazen brush turkeys that make frequent raids on our gardens. Nevertheless, I hope we'll never see

Five weeks later, a message from Kate in Chelmsford Avenue: 'On Tuesday morning as I opened my backdoor, I was surprised to find a wallaby in my backyard. This morning, hearing noisy miners making a great ruckus, I looked up and there it was again. This time I had my camera.'

Then in late November I was taking a few extra Gazettes to one of our deliverers when a sleek young white-faced heron appeared



We're Proud to announce we're Sustainable Green Print (SGP) Certified!

At Kwik Kopy, we prioritise sustainability as we value the environment, and we know that our customers share this sentiment. By choosing to print with us, you can rest assured that you are contributing to positive environmental impact as an industry standard.

We offer sustainable print options to businesses and individual customers in all our services, and we know how to make eco-friendly printing choices that meet your quality and design standards while staying within budget.

Visit your local Kwik Kopy centre today to start your green printing journey!



SCAN THE QR CODE TO REQUEST A QUOTE TODAY

KWIK KOPY ARTARMON
T: 02 9438 1122 | E: print@artarmon.kwikkopy.com.au
Unit 1, 64-66 Whiting St, Artarmon NSW 2064
artarmon.kwikkopy.com.au



Feedback from our representatives ...



Tim James

one priority of the state government and it's time for serious action this year to bring costs down. It's disappointing that the back-to-school vouchers that provided much welcome relief for school expenses were discontinued.

Thomson Park is one of the focal points of this community, a place for sporting teams to hone their skills, locals to relax and local children and students from Artarmon Public School can kick a ball. I was pleased to assist in securing a state government contribution to upgrade the oval. This project is to be delivered by Willoughby City Council. The oval's surface is being replaced and a new tiered seating area constructed at the northern end. The funding was provided under the previous state government's NSW Football Legacy Fund. I look forward to seeing you all enjoying this enhanced space soon.

We are seeing more detail emerging on the concerning approach to planning from the Minns government. Local planning controls will be overridden to impose higher density development across our communities. The 1.2km area surrounding Crows Nest metro station will be among the first targets (affecting most of neighbouring Naremburn). But this is probably only the beginning. Separately, duplexes, townhouses and terraces will be allowed in all existing low-density areas. These new controls will apply to heritage conservation zones such as those in Artarmon, putting large areas of our heritage at risk. There is no question we need more housing, and our community will do its fair share, but we cannot have a developer free-for-all with no regard for our history, character or environment. Development and density must be done right. It must be well planned, sympathetic to its environment and done with the consent of communities. We should not be simply railroaded and locked out of these decisions. I welcome your feedback on the government's approach.

The RNSH master plan has recently been finalised and guides the future of the hospital

The cost of living, housing, groceries and more – almost all of life's basics – is soaring and many people are understandably struggling to make ends meet. Easing the cost-of-living crisis must be the number

site and its expansion over the next 40 years. There is concern that the plan appears to provide for uses such as high-rise housing and office spaces. I will continue to advocate for this space to remain for clinical and health purposes. We need to ensure the limited land is retained to safeguard the hospital capacity to meet our health needs for generations to come.

Finally, please support our local small businesses on Hampden Road during the current upgrade. I continue to work with the council to minimise the impacts of construction and it is pleasing to see progress. Shop local Artarmon!

P: 9439 4199

E: willoughby@parliament.nsw.gov.au.



Tanya Taylor

appeal of Hampden Road and its surrounds. Several milestones have been achieved in the completion or partial completion of various stages of the project. The Village Green park, spanning from north of the tunnel to south of the amenities, is now fully operational. In addition, a section of the footpath extension on the retail side between Francis and Broughton Roads has been completed. Work between the pedestrian crossing and Francis Road is progressing, with 80% of the task already accomplished.

We are now in the midst of the next stage of works, which are expected to finish within four to seven weeks, weather permitting. These include the closure of Broughton Road for drainage works, road works and kerb extensions, along with construction of a retaining wall for the terrace seating area at the Village Green, and the installation of traffic lights at Broughton Road. Furthermore, the construction of the much anticipated amenities block, including the installation of prefabricated toilets, is under way.

In response to requests from Artarmon Village Inc, the local chamber of commerce,

From the mayor

In the past few months, we have seen significant progress on the Artarmon streetscape upgrade project to enhance the liveability and

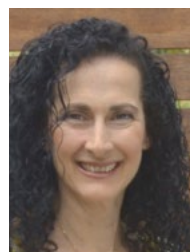
and individual businesses along Hampden Road, I am pleased to announce that outdoor dining fees will be waived for businesses affected by the streetscape upgrade project. The council will provide a fee-free occupation period, including waiving the application/renewal fee, administration fee and usage fee for a single six-month period from the date of approval of a minimum 12-month licence, until December 31, 2024.

I would also like to update you on the progress of the Willoughby South parking study. Following surveys of affected streets, the council is considering introducing timed restrictions to address parking challenges. Your feedback during the exhibition period has been valuable, and we look forward to keeping you informed about the next steps in this initiative.

After nine years of leadership, our chief executive, Debra Just, has announced her retirement to return to family in Adelaide. Debra has left a lasting legacy at the council and across our community and we look forward to celebrating her achievements. We wish Debra all the best in her retirement. The council will now take the necessary steps to fill her position.

As we continue to progress with our projects and initiatives, I encourage all residents to stay connected through our channels, including our website, by email and on social media. I am confident that with your invaluable support and my steadfast commitment, we will build a stronger and more vibrant Artarmon.

E: Tanya.Taylor@Willoughby.nsw.gov.au



Anna Greco

the publication of agendas and reports nine working days before council meetings. This earlier publication will give the public and councillors more time to address issues and questions arising from business to be considered at the meeting.

The state government's recent revision to the Code of Meeting Practice will significantly improve our community's ability to fully engage in the council's decisions.

The code mandates

Feedback from our representatives ...

The council's application for a one-time 15% rate increase in the 2024-25 financial year has been formally submitted to the Independent Pricing and Regulatory Tribunal (IPART). The tribunal is conducting a public exhibition of the application from February to March. Community members can provide feedback directly to IPART. The tribunal will decide by May whether to approve, amend or reject the application. The operating budget for 2024-2025 will include the rate increase of 15%.

The anticipated increase in revenue will enable the council to continue delivering highly valued services to the community. Barring unforeseen events, the council expects to achieve an average annual surplus of \$4.77 million in each of the years from 2024-25 to 2032-33. These surplus funds could be reinvested in community services and projects. However, the council has earmarked \$2 million a year for the maintenance of public areas, including extra cleaning, care, beautification projects in parks, cycling and pedestrian routes, town centres, and tree planting initiatives.

The proposed planning reforms the state government announced in December 2023 have created significant concern for the council and residents of Artarmon. These reforms override the council's planning controls and allow increased density throughout much of the local government area (LGA), including heritage conservation zones. Council staff are drafting a submission outlining concerns such as the potential loss of tree canopy and private open space, traffic congestion, the compromising of our low-density suburb character, especially within heritage conservation areas, and adverse amenity impacts such as privacy loss and overshadowing. This submission will be on the council's website under the tab for Public Notices.

Construction activities have resumed at the Artarmon Parklands Pavilion and utmost care is being taken to preserve the site's heritage. Collaboration with council officers is documenting the significant women's heritage associated with the building. The completion of these works later this year is very exciting!

I would love to hear your thoughts on these or other issues that concern you. Contact

me and let's work together for a better Artarmon.

M: 0459 866 064

E: anna.greco@willoughby.nsw.gov.au



Georgie Roussac

Construction activity at the Village continues. After many years, and with great relief, Transport for NSW has approved the installation of new traffic lights at the Broughton Road intersection. The

existing lights outside the train station entrance will be removed. And (drumroll) ... the long awaited public toilets will soon be a reality, positioned near the train station lifts.

In November I requested a trial of a smoke-free zone along the Hampden Road shopping strip (western side) and, with the support of fellow councillors, this will be implemented once the streetscape works are complete. Under the existing policy, smoking is banned at al fresco dining areas along Hampden Road and at bus stops. However, it does not prevent someone smoking nearby. In practice, people sitting at al fresco dining areas can be, and are, affected by second-hand smoke or vapour from e-cigarettes. The new smoke-free zone aims to further improve the Village environment.

Also in November, councillors unanimously supported a motion that Councillor Robert Samuel and I submitted requesting a community briefing on site at the Royal North Shore Hospital (RNSH) so the community and clinicians can provide feedback on the RNSH master plan 2023-2063. The NSW government's master plan proposes redeveloping the southern campus of the hospital along Herbert Street. Much of this development precludes future use of this land for patient-related health care by the hospital as it primarily proposes building commercial offices, residential accommodation and retail shops. Key worker housing and residential developments are critical but should not be built on hospital land. It is imperative that the land be reserved for hospital infrastructure.

There have been so many planning reforms announced by the NSW government recently

that it's difficult to keep track. The council submitted a response to the government consultation on proposed planning rules to fast-track and increase the capacity for low- and mid-rise housing that closed on 23 February. Some key concerns include the impacts of inappropriate in-fill development such as loss of tree canopy and biodiversity, congestion and lack of infrastructure and services. Further, the proposed controls will, in effect, override the council's local controls, including heritage and environment. I'm very interested to hear your views on the proposed reforms. The council's submission is on its website.

E: Georgie.Roussac@willoughby.nsw.gov.au
M: 0459 879 379 W: georgieroussac.com



Nic Wright

By now many residents would be aware that the state government is swiftly moving forward with the planning reforms it announced before the last election. These changes could

significantly affect our community and I am keen to hear your thoughts.

In essence, these reforms will override our council's planning controls, allow for increased dual occupancies on smaller lots (including in heritage conservation areas) and the introduction of terraces, townhouses, villas and two-storey residential flats in areas now designated as low-density.

Understandably, there are numerous concerns circulating in the community about these proposed changes.

First and foremost, there has been a notable absence of community consultation throughout this process – and the little that has occurred has felt rushed. Willoughby City Council has a strong record of working with state governments, both Liberal and Labor, to achieve the housing targets we are set, and many would be aware that we recently approved a new Local Environment Plan to accommodate significant local housing growth. I appreciate and acknowledge that more housing is urgently needed across the state but we need to ensure that locally this be

Continued on page 14

From page 13

considered in conjunction with impacts on traffic flow, parking, open space utilisation, and the strain on amenities such as schools, hospitals and sport fields. We know from experience that these services are difficult to retrofit and will want the state government to articulate a clear plan for these issues before gazetting changes.

I am keen to hear from residents about these proposed changes, including any suggestions on how they could be improved, and whether our community supports the initiatives. Feedback to me so far has been mixed. As a community, we know that better outcomes can be achieved by using local knowledge to improve these plans and I will fight for our voices to be heard.

Public submissions to the state government closed on 23 February. While Willoughby council must continue to play its part in constructive and well-planned growth – and will make a submission to this process – I will continue separately to engage constructively with senior government ministers and the Planning Department to deliver the suggestions and concerns you feed back to me. I publish a regular electronic newsletter to update residents on these issues when we receive new information, and you can receive it via www.nicwright.com/signup.
M: 0481 033 442
E: nic.wright@willoughby.nsw.gov.au

There is so much to the Girl Guides

by Sarah Dixon, Artarmon Junior Guide Leader

Girl Guides is a youth organisation that has empowered girls and young women in Australia for more than a century. Our guiding light is to reach every girl and any girl because we know Guiding is powerful.

We have more than 100 years' experience in supporting girls become the women of tomorrow. And while the world has changed, the need to support girls to realise their potential has not. We are empowering the women of the future for they will not only influence their families, communities and country – they will change the world.

Any Girl Guide will tell you that amid school pressures, digital realities and high expectations, Girl Guides provides a place where girls can be themselves, explore new skills, make lifelong friendships, and develop a well-rounded world view. We challenge girls to uncover hidden talents, spark creativity, foster community service and ignite a passion for the natural world.

As girls transform into the influential women of the future at Guides, they're not only changing their lives or communities, they're also poised to change the world. And skills developed at Guiding are transferable.

Girl Guides NSW, ACT and NT is focused on the growth and development of girls. Girl Guides provide a place where girls can learn, build

their skills and connect with like-minded peers. The benefits also extend to the leaders and volunteers who play a vital role in supporting the girls.

Girl Guides work to serve their community and help those in need. They participate in many local activities and initiatives aimed at giving back to the community.

Highlights for Artarmon Girl Guides over the past year have included participating in local Australia Day and Anzac Day ceremonies, Clean Up Australia Day, and buying gifts and packing them to send to children in need in developing countries in the Asia Pacific region.

Among the fundamentals in the Australian Guide Program are the Guide promise and law, traditions, outdoors, looking after the environment, teamwork, leadership and learning about other people and cultures through World Guiding.

The girls can participate in unique experiences as they learn and grow, and the leaders proudly watch them flourish into confident young women.

If you would like to find out more about becoming an adult Leader or adult Helper, or a Girl Guide member, email ArtarmonDM@girlguides-nswactnt.org.au.

**Artarmon**
PROGRESS ASSOCIATION INC.

FREE MEMBERSHIP

歡迎大家參加
一起為我們的社區文化活動努力。

The APA is an active community organisation that has been advocating on behalf of residents and businesses in Artarmon since 1906.

**WE WELCOME
NEW MEMBERS**

To join email your name and address to:

membership
@artarmonprogress.org.au





How to look after your personal cybersecurity

We all know that we need to be careful of scams and our online security but there are some new access points that we all need to consider.

1. QR codes
2. Passwords versus passphrases
3. Social media at school time

1. Beware, malicious QR codes can:

- add an unknown contact to your mobile phone list
- connect the victim's device to malicious networks
- automatically initiate phone calls, emails and send text messages from your device
- reveal the victim's location
- enable the camera on the device and start recording
- download further viruses and malware to the device which may provide full access to the attacker.

How to safeguard yourself:

- Be aware of malicious QR codes that might be placed over genuine QR codes in restaurants and public places. Look for QR codes stuck over things.
- Avoid scanning unnecessary QR codes.
- When scanning a QR code, check the link address to ensure it's a legitimate webpage. Scam sites often have hyphens, symbol or misspelt words.

- Be cautious about parking tickets with QR codes.
- Enable multifactor authentication to prevent theft of login credentials.
- Be careful about granting permissions when an app asks.
- Install a mobile security app for virus and malware protection.

2. Passwords are passé – passphrases are longer and stronger

As we have increased our reliance on passwords, adversaries have developed more and more sophisticated ways to crack them. In trying to make passwords stronger, we have made them harder for humans to remember, and easier for machines to crack.

Whenever you can, aim to make your passphrases four or more random words, of at least 14 characters in total, for example, 'red house sky train'.

If you use a sentence this could be predictable because the language you use will have grammar and punctuation rules to follow.

Use a unique passphrase for every valuable account. If adversaries have cracked your passphrase, they will attempt to use it for every account they find that is associated with you, and even change your passphrase so that you can't regain access to your accounts.

You may choose to keep track of your passphrases in a notebook rather than a password manager, because some of the managers are from less reputable vendors.

3. It's back to school time

- If you're posting images of your child online, consider what information you're sharing.
- Don't share images that show personal information. This could be your child's name, age, school logo, street number or street name.

- Choose strong privacy settings for your social media accounts.
- Share only images of your child with people you know and trust.
- Review your 'friends' or 'followers' on all social media accounts and remove anyone you don't know.

For more tips on how to protect yourself from crime, join the group at <https://www.facebook.com/groups/WilloughbyNeighbourhoodWatch>.

What's on in Artarmon

Artarmon Book Club

Contact Artarmon Library

Enquiries: 9419 2849

Artarmon Guides and Junior Guides

Cleland Park, Barton Road, Artarmon

email regionmanagers@girlguides-nswactnt.org.au or asstrm2ns@girlguides-nswactnt.org.au

girlguides-nswactnt.org.au

Artarmon Parklands Community Garden

Sunday mornings. Contact Secretary

ArtarmonCommunityGardensSec@gmail.com

Artarmon Progress Assn, Inc

1st Wed. Monthly (ex Jan) Artarmon Community Hall 139 Artarmon Road, Artarmon 7.40 pm.

Playtime at St Basil's

Wed 10am-12pm during school term
St Basil's church hall, 6 Broughton Road
www.artarmonchurch.org

Bush Care (3 Groups) Artarmon Reserve

1st & 3rd Wed. 2nd Thurs monthly
3rd Sun monthly - 9am - 12 noon
Contact Council: 9777 7875

Cleland Tennis Club

Barton Road, Artarmon, Enquiries: 9419 8844

Domestic Violence Line 1800 65 64 63

Good Beginnings Chinese Playgroup

Artarmon Kids Cottage Community Centre, 18 Broughton Road, Artarmon
Sessions: Thursday, 10am - 12noon

Lifeline - Harbour to Hawkesbury 13 11 14

Northern Sydney Women's Domestic Violence Court Advocacy 1800 737 732

Probus Club of North Sydney

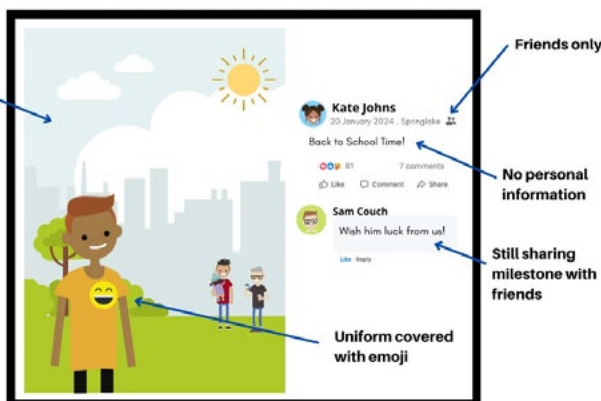
Northbridge Golf Club
3rd Tuesday monthly. Contact membership@probusnorthsydney.org

What you could post →

Unknown location

What you shouldn't post:

- Home address
- Where you go to school
- Parent's name
- Age and first name
- Sports team
- Hobby



SNAP SHOT

ARTARMON

Laing+Simmons
Artarmon

VOL. 43

MARKET WRAP UP




We started the year with a renewed sense of optimism with what was quite a volatile and uncertain 2023. With many of the detrimental global factors that were affecting the property market in 2023 having either subdued or been accepted by the market. In 2024, we expect to see strong performance of the Sydney property market, with much optimism focused around talks of multiple interest rates cuts this year.

The fact that home supply continues to be greatly outstripped by demand is a concern for potential purchasers who will be facing increased competition in the market in the years ahead. We expect this to be further exacerbated by the fact that building approvals of new homes is trending downwards in NSW.

We are noting that purchasers are still increasingly discerning when inspecting properties, with properties that are tastefully/extensively renovated achieving a premium in the market, as many time-poor purchasers are wishing to move in immediately and start living in their new homes. Conversely, we see properties that are in poor condition experiencing a disproportionately high discount to their sales price versus their renovated counterparts.

If you are thinking of selling, contact our experienced agents to see how we can achieve the best result possible for your property.

SALES RESULTS FOR SUMMER 2024

Address				Sale price	Sale date
1A/1 FRANCIS RD	1	1	1	\$804,000	23/01/24
101/421 PAC HWY	2	2	1	\$911,500	16/12/23
29/1 JERSEY RD	2	1	1	\$1,099,000	11/12/23
2/8-10 BRAND RD	2	1	2	\$876,000	08/12/23
11/344 MOWBRAY RD	2	1	1	\$965,000	07/12/23
2/3 FRANCIS RD	2	1	1	\$820,000	06/12/23
1/29-33 PARKES RD	2	1	1	\$985,000	05/12/23
2/6 BENTON RD	2	1	1	\$1,050,000	02/12/23
504/2 BROUGHTON RD	2	1	1	\$1,135,000	02/12/23
55/2 FRANCIS RD	2	1	1	\$1,095,000	02/12/23
17/4 BULLER RD	2	1	0	\$1,080,000	01/12/23
11/1 ROBERT ST	2	1	1	\$1,125,000	01/12/23
16 WEEDON RD	4	2	1	\$4,380,000	29/11/23
12/20 HAMPDEN RD	2	1	1	\$1,075,000	18/11/23
6/33 HAMPDEN RD	2	2	1	\$880,000	17/11/23
6/4 BRAND ST	2	1	1	\$993,000	16/11/23
13 COONEY RD	4	2	2	\$3,860,000	11/11/23
10/1 MILNER RD	2	1	1	\$1,493,000	11/11/23
9/29 PARKES RD	2	1	1	\$944,500	11/11/23
16/3 ROBERT ST	2	1	1	\$1,040,000	11/11/23
14 SELWYN ST	3	1	2	\$3,140,000	11/11/23
15/1-3 BROUGHTON RD	2	1	1	\$1,045,000	10/11/23

*Data where prices disclosed from the period 10/11/23 - 09/02/24 via RPData.



CATHERINE ONG
PRINCIPAL & AREA EXPERT
0418 672 881



JEREMY ONG
PRINCIPAL & AREA EXPERT
0488 242 508

Wishing everyone a healthy and successful 2024 year of the dragon!



Catherine Ong

Jeremy Ong



Isre.com.au/artarmon

	Quantity	Lowest Sale	Highest Sale	Median Value	Average Value	
HOUSE	4 Bed	2	3,860,000	4,380,000	4,120,000	4,120,000
	3 Bed	1	3,140,000	3,140,000	3,140,000	3,140,000
UNIT/THOUSE	1 Bed	1	804,000	804,000	804,000	804,000
	2 Bed	18	820,000	1,493,000	1,042,500	1,034,000

SALES SUMMARY FOR SUMMER 2024