

Artarmon

www.artarmonprogress.org.au

EDITION 102
SEPTEMBER 2023

GAZETTE

supporting the Artarmon community spirit

What you need to know about the Voice

by Winsome Byrne

There is a great deal of contention and confusion about what it would mean — and not mean — if Australian electors voted for an Aboriginal and Torres Strait Islander Voice to be included in the Constitution.

In June, Ian McGill, a constitutional lawyer who lives in Artarmon, addressed a Public Information Meeting organised by the Artarmon Progress Association to clarify some of these concerns.

What it will do:

- It will recognise Aboriginal and Torres Strait Islander people as the first inhabitants of this continent.
- It will give Indigenous people a Voice to represent their views to the national parliament and the executive government on matters affecting them.
- A representation could take the form of a formal statement expressing a particular view on behalf of a represented group.
- It will provide the government with better quality information about Indigenous communities and issues, delivered directly from the communities affected.
- This will produce better quality laws and policies, better targeted investment, and better outcomes for Indigenous people. (It has been proved in other cultures and in other trial sites around Australia that decisions made at the lowest level, closest to where they will be implemented, are the most effective.)

How it will work:

- The recognition will be enshrined in an extra chapter in our Constitution to separate it from the chapters dealing with the parliament, executive and judiciary.

- The Voice will be a body, not an individual.
- The Australian parliament will make laws about how the Voice will operate — its composition, powers, functions and procedures.
- Only the parliament will have the power to determine when a decision maker should consider the Voice's representations.
- A future government will not be able to abolish the Voice but may reform it.
- Representations from the local elements of the Voice will be channelled through a national Indigenous body in Canberra.
- Once a representation is made, the parliament and the government are required to do nothing and do not have to give a reason for doing nothing.
- A possible model for the local elements of the Voice is a fixed number of local and regional voices, each representing a particular region, and a separate body, a national voice, comprising representatives from the local and regional voices.

What the Voice will not have or do:

- It will not have any budget to deliver services or programs.
- It will not have any legislative, executive or judicial power.
- It will not be able to compel the parliament or the government to act on its representations.
- It will not be able to make representations to state governments (unless a state decides to opt in to the Voice, which is possible and to be encouraged).
- It will not introduce race into the Constitution. Race has been a constant feature of our Constitution since its



inception in 1901 and, since the 1967 referendum, the parliament has had the power to make laws for Indigenous people.

Some background:

- The referendum proposal originated in a significant moment of bipartisanship following a meeting between the former prime minister, Tony Abbott, the opposition leader, Bill Shorten, and 40 Aboriginal and Torres Strait Islander leaders from around the country on 6 July 2015 at Kirribilli House. A Referendum Council was established and then formally appointed by the then prime minister, Malcolm Turnbull, and the opposition leader, Bill Shorten.

Continued on Page 6

Inside this issue

Editorial	p2
From the President	p3
Spotlight	p5
Photo comp	p6
History	p7
Community Garden	p8
Shelagh Kemm	p9
Artarmon Village	p11

Public information meeting 13 September

supporting the Artarmon community spirit

The Artarmon Gazette is published quarterly by the Artarmon Progress Association. It is distributed by volunteers, free of charge to Artarmon residents and businesses.

The Artarmon Gazette seeks to inform residents and business people about current local events and issues and discusses matters of interest and concern.

Written contributions and photographs are welcome. Please submit all non-advertising material to the editor. We accept material via email. Editing may be necessary for style, space or layout considerations.

Views and opinions expressed in the Artarmon Gazette are not necessarily those of the Artarmon Progress Association or its members. Although all care is taken for accuracy, no responsibility can be taken by the association, editor, designer or printer.

Publisher Kesh Anand
publisher@artarmonprogress.org.au

Editor Winsome Byrne
editor@artarmonprogress.org.au

Advertising advertise@artarmonprogress.org.au

Coordination David Roberts

Distribution Judy Simpson

Design/ Kwik Kopy Artarmon
Production print@artarmon.kwikkopy.com.au

Printing The Print Facility
RAnell@theprintfacility.com.au

Print Run 5,300 copies

Address PO Box 540 Artarmon 1570

Website www.artarmonprogress.org.au/Gazette

Published by:
**Artarmon Progress
Association**

ABN 77 319 108 019
Since 1906

**The APA committee meets at 7.40pm
on the 1st Wednesday of the month,
excluding January. Public welcome.**

Venue:

**Artarmon Community Hall,
139 Artarmon Road, Artarmon**

PO Box 540 Artarmon NSW 1570
sec@artarmonprogress.org.au
www.artarmonprogress.org.au

President Kesh Anand
Vice President Michael Dawes
Treasurer Adrian Alexander
Secretary Mai Mullins

Traffic & Parking

Federation Judy Simpson and
Mary Ann Irvin

Membership Glenda Hewitt

Heritage & History Project Adrian Alexander

Public Information Meetings

DAs and Council Liaison Plamen Bassarov

NEXT EDITION DEADLINES

Wed Nov 1 Copy & advertising due
Sun Dec 3 Deliveries complete

© Artarmon Progress Association, 2020.
No material may be reproduced by any means without the
permission of the Editor.

Editorial

The strength of interest in the Voice referendum was exemplified by the wonderful turnout for a Public Information Meeting organised by the Artarmon Progress Association in June. The speaker was local constitutional lawyer Ian McGill who set out to clarify some of the concerns people have expressed. A summary is on page 1.

Our next speaker, on 13 September, will be Jono Coombes, the principal of Artarmon Public School (APS). It promises to be an interesting and entertaining evening so feel free to roll up to the Artarmon Library (7.45-9pm).

The APA is always interested to hear the views of Artarmon residents and the issues they're concerned about. So it is holding a 'Listening Post' in Wilkes Avenue on Saturday 9 September from 10am-2pm. We have invited our political representatives so you will be able to discuss matters with them too.

Many regard brush turkeys as a nuisance but as they're protected, we need to learn to live with them. Turn to page 8 to see what those who tend the community garden in Burra Road are doing to protect their produce.

Our bushcare team lost another stalwart recently. English-born Shelagh Kemm was a long-time resident of Artarmon and a huge

contributor to —and participant in — the community. Her obituary is on page 9.

The Love Your Locals campaign initiated by Councillor Georgie Roussac and the APA is turning out to be a huge success. It has helped our shopkeepers during the Hampden Road street works by encouraging us to shop locally. Well done all.

Unfortunately, the street works have had an additional side effect — an increase in pedestrian and driving hazards. So we all need to be especially vigilant and careful to stay safe. See page 10.

The results of the school Photo Competition are in. Turn to page 6 to find out who the three prize winners are. The entries of the first 10 vote winners will be hung at Chatswood Library. Everyone is welcome to attend the opening of the exhibition in the library's Creator Space at 4pm on Friday 20 October.

The local cricket club is always on the lookout for new talent for seniors and juniors teams. See page 4 for how you can join.

**Winsome Byrne
Editor**

APA Public Information Meeting

The focus of this meeting will be on the role of Artarmon Public School in the community and how the community can support the school.

The speakers will be **Jono Coombes**, the new(ish) principal of the school, and **Fiona Roughly**, the new vice president of the P&C.

WHEN: Wed 13 September @ 7.45-9pm

WHERE: Artarmon Library Hall,
139 Artarmon Road

A note from the President



The streetscape works are in full swing now with significant changes to the road surface, availability of parking, and traffic conditions.

To support our businesses through this period, the Love Your Locals program has been running, with weekly draws. To date about 2,000 entries have been submitted and more than \$1,000 in prize money awarded.

To support our businesses, and to have your chance to win, try to spend locally, and have your loyalty card stamped when you spend \$10 or more at a participating shop. (Do ask for a new one when you've filled an old one.)

Please also be aware of the frequently changing traffic conditions. I've seen and heard of a number of 'near misses' due to both drivers (breaking road rules), and pedestrians (often children) not paying attention. Look after yourselves out there!

The Public Information Meeting (PIM) we held in June was very well attended. Ian McGill, a prominent solicitor and director of Uphold & Recognise (a non-profit organisation committed to upholding the Constitution and

recognition of Indigenous Australians), was our guest speaker. The topic was the coming referendum on the Voice. The turnout and the plethora of questions from the audience highlighted the community's great interest in the topic.

This quarter we also held the second annual photo competition for Artarmon Public School students. Students were asked to take pictures of wildlife in Artarmon. Dozens of entries were received, showing that we have a lot more roaming our streets than just brush turkeys! The first place receives \$100, and second and third place \$50 and \$25 respectively. That will go a long way at the tuck shop.

Finally, I'd like to remind everyone that the APA exists to further the interests of the Artarmon area and promote a spirit of citizenship in the community. To that end, we will be holding a 'Listening Post' in Wilkes Avenue on Saturday September 9 from about 10am to 2pm. We will have activities for kids, and some of our local elected representatives will drop by, too. If you're in the area, please stop for a chat. We'd love to hear your thoughts on the main challenges and priorities in our community.

If you would like to receive notifications from us about coming events (such as the PIM), would like help in championing a matter of concern to the residents of Artarmon, or would even like to speak at a future PIM, please contact me via pres@artarmonprogress.org.au.

Kesh Anand – President APA

Around the traps...

- Artarmon resident Jeff Newman was awarded the Medal of the Order of Australia in the King's Birthday honours for his services to philately. Congratulations Jeff!
- Billy and Sunny's newsagency will reopen on 4 September after renovations. Billy and Sunny took advantage of the time to have a much-deserved holiday.
- The TAB in Hampden Road has closed. It had been there for 52 years.
- The council's Emerge Festival will liven up Wilkes Avenue from 21 September to 8 October with live music from 5-8pm every Thursday, Friday and Saturday.

artarmon framing

Custom framing

- Mounting
- Laminating
- Artwork Hanging Systems
- Canvas Stretching
- Mirrors
- Conservation Framing
- Art Restoration
- Advice and Help with Presentation & Conservation of Most Things

Andrew Fortescue
94a Reserve Road, Artarmon
Ph: 9439 9992
9.00 - 4.30 Mon - Fri • 10.00 - 2.00 Sat

HIDDEN COCKTAIL BAR IN ST LEONARDS

An intimate cocktail bar housed inside a working gin distillery.

Finders Distillery in St Leonards makes award winning gin during the week and opens as a cocktail bar on the weekends. Pull up a seat alongside their copper pot still, with a martini in hand and enjoy a locally sourced cheese platter. Open Friday and Saturday from 3-9pm.

www.findersdistillery.com
12/6 Herbert St, St Leonards 2065





Putting on the ritz for Open Day

by Ann-Marie Cahill

We are three-quarters through the year and Artarmon Public School (APS) shows no sign of slowing down! In August, the school held its annual Open Day to coincide with NSW Education Week. The day started with some early morning performances from the school band, strings, and guitar ensembles.

APS has a long-standing reputation for its stunning band and strings performances. However, not as many people know about the APS guitar ensemble. Over recent years, this group of eager students has grown in size and skill. Their acoustic performance includes contemporary and classic and shows their skills and the extent of their collaboration. We can't wait to hear the entire music program at the end-of-year concert!

The Open Day was also an opportunity to showcase the school's achievements inside and outside the classroom. The main event was held as an assembly in the hall. It included dance groups, choirs and our youngest students, the kindy classes. The kindy kids recently celebrated 100 days of



Picture: Ann-Marie Cahill

Time out in the playground.

school in recognition of how much they have achieved in a short time. They all look so tiny, especially on stage, yet they have each grown in confidence and ability over the year. Watching the little students perform gives a true sign of the great work and support they receive.

APS is open for enrolments for kindy students in 2024 and for new students who have recently moved to the area. Tours are available on Friday 15 September and Friday 27 October, meeting at the McMillan Road office at 8.30am. Orientation days for kindy kids are scheduled for Wednesday

8 November and 15 November. For more information about enrolling at APS, please contact the school directly at (02) 9411 1950.

APS is more than a public education centre for Artarmon children. It is also an active member of the Artarmon community, working closely with local businesses to nurture our social vibe. For anyone interested in the role of APS in our greater community, come to the Artarmon Progress Association's Public Information Meeting on 13 September with principal Jono Coombes as a guest speaker. It is sure to be an insightful and entertaining affair!

Howzat! Local cricket club expands to kids competition

by Kalyan Raju Gaddiraju

Step aside Captain Pat and Usman Khawaja. The Artarmon Maestro Club might be producing some budding Test players.

The club has been so successful for adults it has now introduced a children's competition. Its first team was unbeaten in the under 10s Eastern Suburbs winter 2023 competition.

The adult club was formed in 2021, fielding two teams under the Northern Suburbs Cricket Association in the summer of 2021-22. Both teams reached the semifinals.

The next year, under the Sydney Morning Cricket Association, the club fielded six teams in six divisions in the winter competition. One team won the championship, two teams were finalists and another two reached the semifinals.

Last summer, the club had four teams in the competition. Two reached the finals.

The club is now taking registrations for kids under 10, 11, 12, 13 and 14

for the coming summer. Boys and girls will participate in the North Shore Junior Cricket Association competition. Scan QR code for link to registration form.

The club is also looking for new seniors talent for the 2023-24 summer season. Interested players can scan QR code to registration form.

For any inquiries, please email artarmonmaestros@gmail.com.



Register here for Junior Comp



Register here for Senior Comp



The kids team





SPOTLIGHT ON:

Brewing up a storm in Artarmon

by Glenda Hewitt



Aziz Tan

Nine years ago, in London, Aziz Tan started brewing beer as a hobby. When he returned to Artarmon, he decided to keep up his interest and sought out the Flat Rock Brew Club at Naremburn.

This connection was the start of a determination to produce locally brewed craft beer at his Artarmon brewery.

Aziz has become Artarmon's nano brewer, a fancy word for a professional brewer who

brews very small batches. It has been a long journey to acquire the necessary approvals but, in March 2023, he produced and canned his first batch of beer under the label Island Hopper Brewing.

Brewing beer is an interest that's become a passion that Aziz integrates with his busy life as a graphic designer and father of two children.

The philosophy behind the beer is founded on the story of the many islands and the celebration of beers around the world. He takes classic

beer brewing and adds a twist to create something unique and local.

Aziz plans his brewing and flavours around the coming season. He has been working on a recipe with body and aroma suitable for the coming months.

Sustainability is part of the planning process because choosing the right style to brew at a given time helps reduce energy consumption. His planning includes factors such as the

seasonality of the ingredients and adopts a low kilometres sourcing. Each batch has its own individual flavour. Being a small-batch brewer who loves to experiment means his beer has its own subtlety. It's not only a craft beer but one with character — Artarmon character.

Aziz's long-term plan is to make Island Hopper a drawcard at local restaurants. Until then, it is available at Sunset Diner (Lane Cove) and York Lane Bar and Kitchen in the city.

Artarmon

PROGRESS ASSOCIATION INC.

FREE MEMBERSHIP

歡迎大家參加
一起為我們的社區文化活動努力。

The APA is an active community organisation that has been advocating on behalf of residents and businesses in Artarmon since 1906.

WE WELCOME NEW MEMBERS

To join email your name and address to:

membership
@artarmonprogress.org.au

Meet your local lending expert

- ▲ Home loans
- ▲ SMSF loans
- ▲ Business loans
- ▲ Car loans
- ▲ Personal loans
- ▲ Commercial loans

Liberty
Loans for free thinkers



Linda Ding
0424 274 345
lding@libertynetwork.com.au
liberty.com.au/linda-ding



Along with Liberty's full suite of solutions, Linda can also help you compare home loans from a panel of lenders:



Approved applicants only. Lending criteria apply. Linda Ding has access to a panel of lenders through Liberty Network Services Pty Ltd (ABN 65 151 158 628 | Australian Credit Licence 408042) (LNS). LNS may offer products funded by related companies under the Liberty Financial and MoneyPlace brands.

Photo Competition results

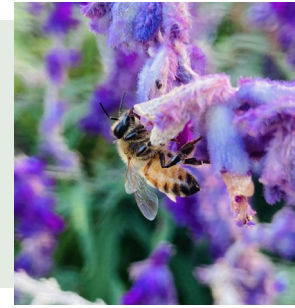
by David Roberts



1st Place — 'Pigeon Conversation' by Alex, 8yo



2nd Place — 'Wildlife on my Balcony' by Farzad, 9yo



3rd Place — 'Busy Bee' by Jacob, 12yo

Once again, our photo competition has been a great success! This year we had even more entries than in 2022.

Congratulations to our winner Alex!! Alex deserves extra credit in that he came 4th last time by just one vote but was determined to try his luck again this year. In fact, since last year Alex has been taking all sorts of photos of lizards, bugs, fish, possums, slugs, snails and spiders and, most recently, pigeons. He's even named many of them.

Second place went to Farzad who is in the same class as Alex. Farzad's family moved to Artarmon only just over a year ago to find a beautiful apartment surrounded by trees full of birds. When Farzad learnt he couldn't have a pet in the apartment, he decided that all the birds on the balcony and in the trees were his pets. Like all good pet owners, Farzad then wanted to feed his flock but his parents weren't so keen on the bird droppings. Fortunately for Farzad, his dad is very artistic — painting and drawing — and Farzad soon found another way to relate to his beloved birds, artistically.

Third place went to Jacob who used his mum's smartphone to take this remarkable photo of a bee. While Jacob had taken a variety of photos of everything from brush turkeys to slugs, he really liked the detail in his photo of the bee. The opportunity to take the photo came one day when he and his mum were walking through the community gardens in Burra Road — well worth a visit any time.

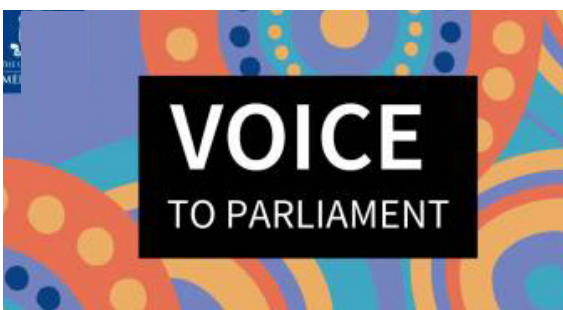
This project wouldn't be possible without the help of Artarmon Public School and its P&C Association, Willoughby City Council, and the Chatswood Library. So many thanks to them for their wonderful assistance. Our thanks also go to Peter Wang, the APA's webmaster, who liaised closely with the school, and to Nicholas Yu from the council, who undertook to promote and coordinate the exhibition of entries at the library. Nicholas, who has a master's degree in environmental sciences and is a keen photographer of nature, will host the launch of the exhibition at the library in October.

But mostly we would like to thank you as parents and all your children who took part in this competition. We would love to run more events like this but we also need your support in other ways. The strength of a community organisation depends a lot on its membership so we want to use this opportunity to ask all of you whose children took part, and all your friends and family members who voted, to please take up membership of the Artarmon Progress Association. The application form is at <https://artarmonprogress.org.au/membership/>. Very importantly, membership is FREE.

In recognition of the students' outstanding efforts, and on behalf of the APA, the council, the APS and P&C, we would like to invite you to the opening of the exhibition of the top 20 entries at Chatswood Library's Creator Space, 4pm Friday 20 October.

We look forward to seeing you there to celebrate our young photographers who have shown a fascination with nature, wonderful powers of observation and real photographic talent.

What you need to know about the Voice



Continued from Page 1

- The Referendum Council processes resulted in the Uluru Statement from the Heart in 2017.
- The Referendum Council held 12 regional dialogues with Indigenous peoples across the nation and one in Canberra, culminating in a national constitutional convention at Uluru.
- A referendum is the only way to change the Constitution and its success will require a 'double majority', which means a majority of people in Australia plus a majority of people in a majority of states (i.e. four of the six). That a referendum should be held was also the first recommendation of the bipartisan Referendum Council.
- There has been a great deal of discussion about possible challenges in the High Court of Australia to decisions of the executive government that ignore the Voice's representations. To invoke the jurisdiction of the High Court is difficult either in its original jurisdiction or on appeal. The risk of litigation is overstated and, in any event it is clear that the legal effect of representations from the Voice is a matter for the parliament, not the courts.

Artarmon History Project update Part 7

Residential development of Artarmon's western side

by Adrian Alexander

The first 80 years

In 1810, William Gore, provost marshal for NSW, was granted 150 acres in east Artarmon and part of Willoughby south. Gore acquired another 12 properties in the district over the next few years and began clearing the land for agriculture and cattle grazing.

North Shore railway line

The North Shore railway line from St Leonards to Hornsby was opened in 1890 as a single line. It was extended to Milsons Point ferry wharf (at Luna Park) by 1893. The line was duplicated in 1900 and electrified in 1926. The Sydney Harbour Bridge opened in 1932.

Initially, Artarmon did not have a station but one was opened in July 1898 after Thomas Broughton lobbied the railway commissioners, with the support of the NSW government, which began selling residential allotments in Artarmon. Residential sales proceeded quickly after its opening.

Residential allotment precincts

In Gore Hill and Artarmon, residential precincts were established next to Royal North Shore Hospital (later absorbed into the hospital precinct), where the North Shore Private Hospital and Reserve Road hospital carpark are today, in the Artarmon industrial area and in west Artarmon north of the Gore Hill Freeway. Only the precinct north of the freeway remains today.

Artarmon industrial area precinct

The houses in this precinct were in the area bounded by Pacific Highway, Hotham Parade, Reserve Road and Carlotta Street but also included parts of Herbert, Cleg, Punch and Waltham streets.

This estate housed many of the employees of the adjoining three brickworks. When the last brickworks closed in the late 1960s, there was a gradual conversion of the area to light industrial use.

Between 1884 and 1908, 304 residential allotments were sold. The remaining 41 were sold by 1925.

West Artarmon precinct

Residential subdivision in west Artarmon was undertaken by the NSW government in the 'politician streets' (Abbott, McMillan, Barton, Thomson, Parkes, Simpson and Cleland), by Thomas Broughton, either on his own account or in partnership with others, and by the Richard Harnett family in Eric Road.

In 1894, the NSW government sold the first three allotments to William Cleland junior, later a mayor of Willoughby. These were on the corner of Barton and Abbott roads and are now part of Artarmon Public School grounds. Cleland Park and Cleland Road are named after him.

In 1898, Thomas Broughton listed 105 allotments for sale and sold 73 at auction on the first day. This subdivision of 25 acres was bounded by Jersey Road in the south, Elizabeth Street in the east, Brand Street in the north and towards Buller Road in the west. The estate included Hampden, Broughton and Francis roads and part of Robert Street.

Thomas Broughton and his partner Francis Rogers offered the Chamberlain Hills Estate for sale between 1903 and 1919. This estate later became known as the 'soldiers streets' (Kitchener, Buller, White, French, Rimington and Baden-Powell) as they were named after English generals who participated in the Second Boer War in South Africa (1898-1902).

Apartment living

In 1969 after public consultation, Willoughby Council changed the land zoning in west Artarmon north of the freeway to allow construction of townhouses, three-storey walk-up apartments, and apartment blocks



Broughton Road about 1910 looking towards the railway station.

Picture: Willoughby

of up to 12 storeys in the area bounded by Hampden, Jersey, Buller and Francis roads. The townhouses and apartments were built mainly in the 1970s and 1980s. Few detached houses remain in this precinct.

Support services

The Artarmon Village shops in Hampden Road began to appear about 1910 with James Hall opening a general store on the corner of Broughton and Hampden roads where the 7-11 shop is today.

As residential allotment sales on both sides of the railway line increased, more shops and support services arrived to meet the needs of residents. These included the water reservoirs on Mowbray Road (1888), electricity (1916), sewerage (by 1920), Artarmon Public School (1910), Artarmon Drill Hall (1910, later Artarmon School of Arts and St Basil's Church Hall), St Basils Church (1912), butcher shop (1913), chemist (1913), ironmonger/hardware (1915), newsagent (1921), NSW State Savings Bank (1921), Masonic Hall (1923), Artarmon picture theatre (1923), official Post Office (1924).

Artarmon Progress Association was first mentioned in the newspaper in 1906 and it has been advocating for and working with residents to achieve better outcomes for the community ever since.

history@artarmonprogress.org.au

Artarmon GREEN SPACE

The community garden is located on what was previously the upper bowling green of the former Artarmon bowling club. It is surrounded by the superb natural bushland of Artarmon Reserve.

En garde! Detering brush turkeys takes ingenuity

by Glenda Hewitt

What do you do when wildlife finds your garden as enticing as the gardeners find it? You research and think laterally.

The Artarmon Community Garden has been invaded by brush turkeys which have been having a wonderful time partying on the freshly turned soil of new plantings and the (once) plentiful (potential) harvest of root vegetables.

Brush turkeys are a common problem in parts of Artarmon (along with sulphur crested cockatoos and possums!)

But beware, brush turkeys! After much research, and with great ingenuity and resourcefulness by the gardeners, there are now guard bears (and other soft toys) on

duty. These are supplemented by dangling DVDs, netting, wire and timber constructions that the gardeners hope will act as deterrents.

The compost bays, which an amorous male was eyeing off as a potential nest, have also been covered.

Does it work? The gardeners are not entirely certain but it does add an interesting, entertaining and colourful touch to the garden. Up to six brush turkeys can be spotted at any time, fossicking for goodies around the garden.

With a dry summer approaching, the gardeners are thinking laterally about drought proofing the garden. The installation



When it comes to deterring brush turkeys, anything goes.
Picture: Glenda Hewitt

of more wicking beds is planned as they self-water from reservoir storage installed in the bottom of the raised beds. The shape and look of the garden is constantly changing but the commitment to growing fruit, herbs and vegetables and planting pollen-attracting shrubs and flowers is unchanged.

At the July annual general meeting, former vice-president Fiona Carter was elected president and the new vice-president is Ribhu Sinha. The treasurer is Lisa Nguyen and continuing as secretary is Glenda Hewitt. Annual membership renewals fell due on 1 July.

Artarmon Library

Events & Programs

Story Play

Mondays 10-10.30am during school terms only.

Weekly sessions of interactive play, stories and songs to help develop early literacy skills

No bookings required. Children under the age of 11 must be supervised by an adult.

Justice of Peace service

Artarmon Library Thursdays, 6-7pm

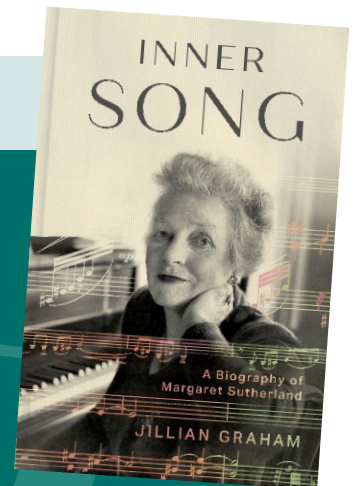
Local Author Program

Discover our local author program, connecting writers, artists and illustrators with new audiences and developing community connections.

Visit our website for details <https://libraries.willoughby.nsw.gov.au/Events-and-programs/TalksWilloughby>

Opening Hours

Monday:	10am - 2pm
Tuesday, Friday:	2pm - 5pm
Thursday:	2pm - 8pm
Friday:	10am - 12.30pm
Saturday:	10am - 1pm



Book Review

Inner Song: A Biography of Margaret Sutherland — by Jillian Graham

Jillian Graham, a Melbourne-based writer and researcher, received the prestigious Redmond Barry Fellowship in 2018.

Her latest book delves into the remarkable life and achievements of Australian music pioneer, Margaret Sutherland. With great insight, Graham sheds light on the significance of Sutherland's contributions and the obstacles she encountered as a female composer in a predominantly male industry.

Margaret Sutherland's enduring legacy in 20th century music demands recognition for her notable accomplishments.

'Let us read, and let us dance. These two amusements will never do any harm to the world.' — Voltaire

A strong belief in the importance of contributing

OBITUARY Shelagh Kemm (1943 - 2023) By Judy Simpson



Tony and Shelagh Kemm on their wedding day in 1982

Artarmon bushcare has lost another of its stalwart supporters with the death of Shelagh Kemm, who lived in Cooney Road for more than 40 years.

Shelagh was born in 1943 and raised in Leeds, in the north of England among the Yorkshire coal mines. Coal production was stepped up to meet the increasing demands of World War II. Shelagh was convinced that it was the coal dust in the air during her early years that was to blame for the chronic lung disease that dogged her later years.

Shelagh grew up in a household where, if you wanted a birthday party, even at five years old, you were given the responsibility of organising it yourself. So from a young age, she was organising, catering and hosting elaborate affairs. It was no surprise then that she went on to study catering management and to work in hospitality.

In 1981 Shelagh took a holiday, travelling to Canada, Vanuatu and Australia. She ended up in Sydney, marrying Tony Kemm in 1982 and settling into Artarmon with him and his two daughters, Sophie and Katherine. As they said in their eulogy, 'Together Dad and Shelagh maintained a home and social life that was forged by Dad's indefatigable bonhomie, and by her love of hospitality around food. A large part of their life was driven by Shelagh's

strong belief in the importance of building and contributing to community.'

Shelagh and Tony took up regular bushwalking and bird watching, joined the Probus Club and bushcare groups. They volunteered for the Sydney Olympics and subscribed to the Sydney Symphony Orchestra, Opera Australia and the Sydney Mozart Society's concerts at the Concourse Theatre in Chatswood.

During her working life and in retirement, Shelagh entertained regularly and was well known for making marmalade and chutneys, with the proceeds going to one of her favourite charities. Her many friends are now wondering what to do with their empty jars.

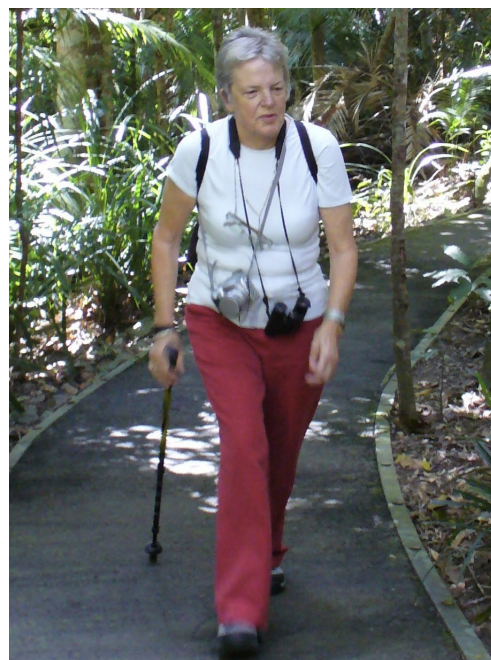
Born during the war, Shelagh grew up in a period of rationing and great austerity. She learnt to sew, to buy and store food economically, to re-use and recycle — skills that are newly valued today.

At that time, the UK leadership comprised the Queen and a Labour government intent on building a welfare state. This perhaps explains the complexity of Shelagh's values. She was always interested in politics and supporting those less well off. But she was also a committed monarchist, devotedly respectful of the Queen, and she determinedly held out to see Charles III crowned on 6 May. For her, the monarchy represented an obligation to society and the environment, with a sense of duty and a charitable care towards those in need.



Another slice, Bob? (Taffel): Shelagh in hospitality mode

Shelagh was an avid reader and her house was filled with books, including dozens by Australian authors. Through reading she informed herself about Australian history and the story of the Stolen Generations. Thus she gained an understanding of the cost of colonialism, and the connection of Indigenous people to country, that was rare in people of her generation.



On holiday in Cairns in 2020

She profoundly understood the emerging risk to the environment and worked with bushcare groups in Artarmon Reserve to preserve and foster the land on which she lived.

From her reading and experience, her community engagement, her travels and exploration of land, Shelagh understood the significance of the ecosystem — both socially and on country. She understood that they operate in context, that both types — human and landscapes — need protection, fortification, contribution and fostering.

Naturally gregarious, Shelagh had many friends from her diverse activities. She will be sadly missed by friends and family.

A little care makes accidents rare

by David Roberts

It was a Thursday morning when I saw an almost fatal accident on Hampden Road. The traffic lights had turned red for cars and green for pedestrians. A small group started to cross. Out front was a young businesswoman clearly anxious not to miss the next train. Then suddenly a car came though the lights and would have run her down if she had not leapt back instantly. It was a close call, and the young woman was in shock for some time.

While it is a great that our streetscape works are now well under way, they do cause a lot of distraction with graders, bob cats, trucks and workers engaged in jack hammering and so on. So this is a call to all readers to drive slowly and safely though the area where the roadworks are taking place.

Research carried out by the Australian Automobile Association underlines just how dangerous these kinds of distractions can be. It found that in Australia, distraction is the main contributing factor in about 16% of serious casualty road crashes. It also suggests that distracted driving is as dangerous as, if

not more dangerous, than drink driving. Now that's something many of us may never have realised!

Then you combine this with other research that shows that taking your eyes off the road for two seconds doubles the risk of a crash or near crash. 'For example, when driving at 50km/h, if you take your eyes off the road for two seconds, you'll travel 28m.' The speed limit on Hampden Road around the village roadworks area is 40km/h, which means taking your eye off the road for two seconds you would travel 22.4m. This could easily find you driving through a red light.

I have also noticed that although there is a no right-hand turn sign from Hampden into Francis Road, I have often seen cars ignoring this and making the turn. Again, I have seen near misses here, even with a mother and child in a pram suddenly stopping as a car made the



turn despite the sign. Fortunately, the car also stopped and a disaster was averted.

So from us here at the Artarmon Progress Association, we ask you to stay mindful and drive slowly and safely along Hampden Road where the roadworks are taking place, and please observe any traffic signs. As one slogan says, 'Alert today, Alive tomorrow'. Another tells us to 'Think, and Drive, Stay Alive'.

**IF YOU
CAN
DREAM IT,
WE CAN
DO IT**

KwikKopy
**WE MAKE
POSSIBLE**



You might know us as the place that prints stuff. But what you might not know is that we do so much more.

With everything from stickers to posters, banners to packaging, we are here to help you solve all types of problems with design, print and signage.

Think of us as your team of dreamers, doers and makers, armed with optimism and ingenuity, ready to turn your problems into opportunities.

Request a quote today from Luke or Sabrina at Kwik Kopy Artarmon and find out what's possible!



SCAN THE QR CODE TO REQUEST A QUOTE TODAY

KWIK KOPY ARTARMON
T: 02 9438 1122 | E: print@artarmon.kwikkopy.com.au
Unit 1, 64-66 Whiting St, Artarmon NSW 2064
artarmon.kwikkopy.com.au

Artarmon Village



Gotta love the Love Your Locals campaign

by Nick Logan, president, Artarmon Village Inc



Artarmon Newsagency has been going through a renovation and local legends, Sunny and Billy, took the opportunity to have a well-earned holiday. Don't worry — they will reopen on 4 September looking fresh and relaxed.

'Love Your Locals' is the village loyalty program presented to us with love by the Artarmon Progress Association with a grant from Willoughby City Council. It has been a pleasure rewarding customers for their support during the Hampden Road upgrade.

The weekly winners of the \$50 vouchers have been very excited and nominated a diverse range of local businesses in which to spend their winnings. The selected shops have also been honoured and thrilled to be nominated!

Look for the 'Love Your Locals' poster at your favourite village businesses and ask them for a card/stamp for purchases of \$10 or more. You've gotta be in it to win it!

As of 1 August, 1556 'Love Your Locals' cards had been submitted and 18 winners had selected 11 different businesses.

AVI continues to find the reduction in traffic through Artarmon and the loss of accessible parking to be counter intuitive to increasing business in our village.

Yes, we have a railway station but people do not come by train to shop in Artarmon and will not come until the facade and bent old power poles have been beautified. Herding the landlords into agreeing to a design and then carrying out a façade renovation will be difficult but essential if we want people to get off the train to shop. I encourage you all to help the council understand this via email@willoughby.nsw.gov.au or via our Naremburn Ward councillors.

I sound like a broken record but the village businesses rely on accessible parking for customers stopping on the way to and from school and work. We don't believe all loading

zones need to be enforced on the weekends and have asked the council to adjust the restrictions.

Very sad to see Artarmon TAB closing in July. The owner, Arthur Kriticos, had been in Artarmon for decades and always supported the community and the village.

The shopping strip is starting to resemble a boxer's smile with gaps along Hampden Road where some businesses have not been able to survive the attrition of the road works.

The three shops from 98 to 102 Hampden Road changed owner on 4 July. In time, the new owner intends to develop all three as a block, pending approval.

On behalf of our members, thank you again for your loyalty and support. We cannot tell you how much we appreciate your custom at this time.

Treating itchy skin

by Nick Logan

Eczema and dermatitis are an inflammation of the skin that results in a rash that can be red, itchy and dry.

There are two main types of dermatitis.

- Contact dermatitis is an irritation caused by an allergic reaction to things such as jewellery, perfume, plants and rubber, or irritants such as detergent, soap, chemicals and friction.
- Atopic dermatitis/eczema is a chronic dermatitis that often occurs in people with a family history of eczema, asthma or hayfever. It usually begins in early childhood and often disappears by the teenage years. Flare-ups can be caused by stress, allergies, irritants, sand, rough fabrics and weather changes, especially when the humidity drops at the end of autumn.

Treatment includes finding and removing the cause, moisturising dry skin, relieving the itch, stopping inflammation and treating and preventing skin infection.

Products for the treatment of dermatitis include:

- Skin moisturisers are an essential part of treatment. They reduce frequency of flare-ups and improve the absorption of stronger treatments when required. It is important to use a hypoallergenic moisturiser twice a day, especially after bathing.
- Topical corticosteroids (TCS) are the mainstay of treatments for exacerbated dermatitis. They are available as creams, ointments and lotions in a variety of potencies. TCS are very safe when used according to directions and can bring angry, red skin under control quite rapidly.
- Other treatments include antihistamines and tars and newer treatments such as picrolimus, immunosuppressants and some biologics will probably soon hit the market.

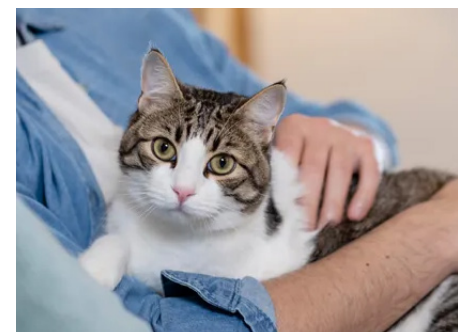
Self-care for dermatitis can involve:

- having shorter showers or baths and using warm rather than hot water

- using soap substitutes
- gently patting skin dry after a bath rather than rubbing
- avoiding getting too hot, and wearing breathable, soft, smooth fabrics
- avoiding your specific triggers such as dogs, cats, detergents and chemicals.

Spring can sometimes trigger dermatitis but generally it will improve as humidity returns after winter.

Please don't hesitate to ask your pharmacist for advice and/or printed information on dermatitis and its treatments.



Cats and dogs can cause itchy skin in some people

Feedback from our representatives...



Tim James

The housing and rental affordability crisis is being felt significantly in Artarmon. The last Census found exactly half of Artarmon residents were renters. As the shadow minister for fair trading, I'm working to ensure government creates a fair and equitable rental market that works for us all. Everyone should be able to afford a roof over their heads and ensuring adequate housing supply is a vital part of achieving that.

However, the recent foreshadowing of expanded development and density within the north shore is of concern. Any development needs to be done in an appropriate manner; buildings need to be sympathetic to their space and properly planned, and investment in infrastructure needs to accompany it. Our community needs to be brought along on the journey, properly consulted, and essential infrastructure such as schools and public transport built. I'm watching developments such as the Metro Dive site on Mowbray Road to ensure the government meets our community's expectations.

On the rental crisis we need a well-considered balance that makes life easier for renters and ensures owners provide adequate housing stock. I'm continuing to work on a comprehensive reform agenda that will include: the establishment of a portable rental bond scheme, enhanced protection for tenant information, plans to make it easier to own pets in rentals, extending termination notice periods, and introducing standardised three- to five-year leases. Renters face significant pressure right now and can't wait for these vital reforms to ease affordability pressures.

I strongly support better active transport connections in the Willoughby area and have worked to secure the Chatswood to St Leonards cycleway that would traverse Artarmon via Hampden Road and Herbert Street. With my advocacy, the former state government announced \$5 million for construction. The present government has decided not to commit to the full \$5 million, instead announcing a \$1 million grant to the council for continued planning work. I will

continue to advocate strongly for the delivery of this infrastructure and will help the council to secure extra funding to begin construction.

P: 9439 4199
E: willoughby@parliament.nsw.gov.au

From the mayor



Tanya Taylor

Artarmon street works
The Artarmon local centre streetscape project has seen great progress in the past few months. Much of the work to date has been underground, including stormwater, services and sub-base preparation. Some of the new footpaths are now partly complete with pavers installed. Village Green construction has included earthworks, the installation of electrical pits and conduits for the feature, and installation of the water supply. I am delighted that we are on track and on time and I thank the Artarmon community for your patience during these much-needed works.

At our most recent council meeting it was agreed to create three new parking spaces at 2-4 Jersey Road in response to community and business needs. This is a three-month trial after which we will consult the community to determine if the arrangement will become permanent.

Royal North Shore Hospital

A 40km/h High Pedestrian Activity Area (HPAA) was introduced at the Royal North Shore Hospital precinct on July 27. The new limit in and around the precinct will make this extremely busy hub safer for pedestrians. The traffic changes, developed in accordance with Transport for NSW, include gateways, traffic calming devices and a new pedestrian crossing. Please look out for changes when driving in or around the precinct.

Infrastructure and services

Our two foundational documents that set out the council's goals for infrastructure and services have now been adopted. The Operational Plan, for the financial year 2023-24, has information on the council's capital works expenditure, budget and revenue policy, overall changes to fees and charges, including the domestic waste management

charge, corporate performance indicators and business improvements.

The Long Term Financial Plan covers the decade from now to 2033 and outlines the council's response to an unprecedented and volatile economic climate that has challenged the council's financial sustainability. It was agreed that we will start public engagement on a potential special rate variation.

Emerge Festival

The Emerge Festival will be coming to Wilkes Avenue in September-October. As part of our annual Spring Festival, from 5-8pm every Thursday, Friday and Saturday from 21 September to 8 October, we will deliver a diverse program of live music to enjoy on the warmer evenings and to connect with neighbours and friends. For more information visit emerge.com.au.

E: Tanya.Taylor@Willoughby.nsw.gov.au



Anna Greco

The council's new **Local Environmental Plan (LEP)** became official on 30 June, bringing with it the welcome strengthening of heritage controls on our conservation areas.

The Artarmon Progress Association (APA) submissions were instrumental in the inclusion of provisions that the council will not support applications to demolish a heritage item or contributory buildings within a heritage conservation area. Thank you, APA!

Further, the demolition of heritage items will be allowed only in exceptional circumstances and extra assessment criteria have been added to clarify the meaning of 'exceptional circumstances'. This includes the council's ability to request an independent peer review of the applicant's dilapidation report.

I am particularly excited by the new LEP provisions that guard against 'facadism', that is, keeping the building's façade without retaining any of the significant structural fabric behind the front exterior wall.

The new requirements ensure the street elevations and visible side elevations do not significantly change. They also allow for

Feedback from our representatives...

the front principal portion of the building to be retained, which can include the first four rooms of the dwelling, staircases and fireplaces.

While the new provisions strengthen the previous requirements to safeguard heritage controls in our conservation areas, they are open to interpretation. It is therefore important that the community stay vigilant about development in Artarmon and respond, report and advocate for strict adherence to the new controls.

More great news is that the **Artarmon Bowling Club** is now officially a heritage item in the LEP. However, it is heart breaking to see our much-loved clubhouse in its current state.

Approvals for the development of the clubhouse pavilion are progressing with stringent provisions to protect heritage items during construction.

This includes briefing the builder and the work crew on the heritage significance of the clubhouse and its parts before construction begins, and assigning a heritage monitor to the site.

Finally, I wish to acknowledge the newly formed heritage advisory committee and its commitment to protecting our built and cultural heritage. We can look forward to exciting new initiatives in heritage preservation, recognition and collaboration from this committee.

I would love to hear your thoughts on how to better protect Artarmon's heritage values.

P: 0459 866 064

E: anna.greco@willoughby.nsw.gov.au



Georgie Roussac

St Leonards and Crows Nest 2036 plan

In July I represented Willoughby City Council at the first working party meeting with North Sydney and Lane Cove councils to explore a

coordinated approach to the planning, design and management of the St Leonards and Crows Nest precinct. The NSW government's 2036 plan prescribes significant changes to height and density.

The working party will be an important opportunity to collaborate with neighbouring councils and advocate for the necessary infrastructure (such as schools), open space, community facilities and traffic flow management to meet the needs of the existing and future population. If you have any views or would like to know more, please give me a call.

On 27 July a new 40km/h speed zone was introduced in the **Royal North Shore Hospital** precinct. The changes are designed to alert drivers to the presence of pedestrians. The change covers public roads around the hospital, including Herbert and Frederick streets, Reserve Road and Westbourne Street, as well as private roads within the hospital grounds.

The council is looking at the best way to manage the **collection of bulky waste** such as furniture and small appliances. We can retain the existing system, which consists of three free collections a year on dates decided by the council, plus one free collection on a date decided by the household. Alternatively, we can move to a new system allowing four free collections a year on dates decided by the household. I'm really interested in your views. Please note that a change, if any, would not occur until next March.

In March the council decided that **Thomson Oval** would now be available for local community use from 1pm on Sundays (i.e. it cannot be booked by sporting organisations). Thomson Oval is a great community asset and well used by Artarmon Public School, sports clubs and residents, which is fantastic. However, it is important that Sunday afternoons are available for community use only. If you notice the oval being used for purposes other than informal recreation, please call the council's after-hours number 9777 1000 so that staff can investigate.

E: Georgie.Roussac@willoughby.nsw.gov.au

M: 0459 879 379

W: georgieroussac.com



Nic Wright

Special rates variation

Like many organisations, Willoughby City Council has recently been hit by a range of

external financial issues, including inflation costs and interest rate rises.

In June, the council resolved to consult the community about a proposed 'special rate variation' that could increase rates by up to 20%.

I encourage you to look out for these surveys and consultations and participate if you can. As with all decisions on the council, it is important that the community's voice be heard on these important issues.

As I have for more than a decade, I will continue to insist that the council examine appropriate savings measures and to advocate that we manage your money responsibly. This consultation will help us understand what the priorities should be and whether rates should be increased to support them. I know this is a significant increase, and I want to assure you that no decision has been made yet and your feedback will be central to any decision.

If you would like to add your feedback to the process or let me know your thoughts, please feel free to email me.

Artarmon Village upgrade

There's no doubt that the works along Hampden Road are having a significant impact on the local amenity. The work has been planned for many years and subject to extensive consultation with community groups and businesses to try to minimise the upheaval. But as with all projects of this scale, we unfortunately cannot avoid disruptions altogether. As the old saying goes, you can't make an omelette without breaking eggs.

Works are progressing as scheduled but there will be impacts for many months to come.

I appreciate that the constant changes, particularly for traffic, are a significant concern to many. If you would like regular updates on the proposed schedule of building and traffic changes, please email me and I can have you added to the council's communications.

As always, if I can be of any help with council-related matters, please do not hesitate to contact me.

E: nic.wright@willoughby.nsw.gov.au

M: 0481 033 442

What's on in Artarmon

Artarmon Book Club

Contact Artarmon Library
Enquiries: 9419 2849

Artarmon Guides and Junior Guides

Cleland Park, Barton Road, Artarmon
Contact Karen Pearson 0414 682 879
or email artarmonjuniorguides@gmail.com

Artarmon Parklands Community Garden

Sunday mornings. Contact Secretary
ArtarmonCommunityGardensSec@gmail.com

Artarmon Progress Assn, Inc

1st Wed. Monthly (ex Jan) Artarmon
Community Hall 139 Artarmon Road,
Artarmon 7.40 pm.

Bilingual (English & Mandarin) Playgroup

St Basil's Church Hall 6 Broughton Rd.
Sessions: Thursday 10.00am - 12 noon

Bush Care (3 Groups) Artarmon Reserve

1st & 3rd Wed. 2nd Thurs monthly
3rd Sun monthly - 9am - 12 noon
Contact Council: 9777 7875

Cleland Tennis Club Barton Road,

Artarmon, Enquiries: 9419 8844

Domestic Violence Line 1800 65 64 63

Good Beginnings Chinese Playgroup

Artarmon Kids Cottage Community
Centre, 18 Broughton Road, Artarmon
Sessions: Thursday, 10am - 12noon

Lifeline - Harbour to Hawkesbury 13 11 14

Northern Sydney Women's Domestic

Violence Court Advocacy 1800 737 732

Probus Club of North Sydney

Northbridge Golf Club
3rd Tuesday monthly. Contact
membership@probusnorthsydney.org.

If you have a not-for-profit organisation, i.e. bridge club, walking group etc, that could be mentioned in this column, please email editor@artarmonprogress.org.au

Mystery nights & cooking challenges

by Lucy Boyd

I enjoy being a Girl Guide leader because it allows me to be part of an international movement that helps girls have fun and develop friendships. Before I was a leader, I was a Guide for 10 years during which I learnt many valuable skills, including how to start a campfire, make a camp kitchen and work in patrols. I also participated in adventurous activities that I wouldn't usually have been able to experience, including canoeing, sailing, camping in a zoo, horse riding, and cooking for an entire camp of girls.

This is my first year as a leader and it has been exciting to lead a new unit. Recently the Guides have been working on achieving their 'book' badge, which included creating a mini-library within the Guide Hall decorated

and filled with books from the girls. Other activities included campfires, cooking and craft nights and a highly anticipated Harry Potter movie night.

Our meetings during term had themes based on book categories. We also held a mystery MasterChef night when the girls were given random ingredients and asked to produce a delicious masterpiece. This really tested their cooking and creative skills.

Other recent highlights have been a campfire at Lane Cove Guide Hall and canoeing at the Sailors Bay Sea Scouts Boatshed.

Find out more about Guides and Junior Guides at <https://www.girlguides-nswactnt.org.au/>



GIRL GUIDES
AUSTRALIA
NSW ACT NT

Guides completing a series of games to find an 'alien' that was running loose around the park near the Guide Hall



Canoeing at Sailors Bay



A campfire at the Lane Cove Guide Hall





Neighbourhood Watch

Keeping your home safe from burglars is crucial for every home owner. Burglaries can cause significant setbacks, including financial loss and emotional distress. Fortunately, there are several steps you can take to make your house less attractive to burglars. Here are some tips.

1. Install a security system. One of the best ways to make your home less attractive to burglars is a security system. It can deter burglars from trying to break into your home as they know there is a high chance of getting caught. There are several security systems on the market, including alarms, video cameras and motion sensors. These can be installed indoors and outdoors and can give you peace of mind knowing that your home is well protected.

How to keep burglars out

2. Keep your doors and windows locked. Burglars are opportunistic and often look for easy targets. By keeping your doors and windows locked, you make it much harder for burglars to gain access to your home. Make sure all your windows and doors are locked when you leave home and consider installing deadbolts or security locks for added protection.
3. Use outdoor lighting. Darkness provides cover for burglars, so installing outdoor lighting can help deter them. Consider motion-activated lights that will turn on when someone approaches your home. This can startle burglars and make them think twice about trying to break in.
4. Maintain your landscaping. Overgrown bushes and trees provide cover for burglars, making it easier for them to

sneak around your property unnoticed. Keep your landscaping well maintained and consider trimming any trees or bushes that provide too much cover.

5. Don't leave valuables (especially car keys) in plain sight. Burglars are often attracted to valuable items visible from outside your home. Keep your valuables out of sight and consider installing curtains or blinds to prevent people looking inside your home.

Making your home less attractive to burglars doesn't have to be difficult or expensive. By taking these simple steps, you can significantly reduce the likelihood of a break-in and keep your home and family safe.

For more tips and to stay up to date join the Willoughby Neighbourhood Watch group on Facebook www.Facebook.Com/groups/WilloughbyNeighbourhoodWatch/

Are you ready for paperless prescriptions?

- Australia is currently transitioning to digital scripts
- Your GP can now send you your scripts as a token via SMS or email
- Soon you will be able to grant your pharmacy access to your digital scripts and do away with the tokens
- Our free MedAdvisor app streamlines and organises this process
- Your doctor will still be able to print off paper scripts if required
- Ask our friendly team if you have any questions or need help



Nick Logan

Pharmacist
Advice



96 Hampden Road, Artarmon
Phone 9419 6880 Fax 9419 6868
Email nloganpa@bigpond.net.au
Web www.pharmacistadvice.com.au

SNAP SHOT

ARTARMON

Laing+Simmons
Artarmon

VOL. 41

MARKET WRAP UP

What a great contrast from last winter! The lower north shore has experienced record sale prices being achieved and a strong auction clearance rate throughout the season. Sydney house prices have increased a staggering 5.30% in the June quarter alone, an almost unbelievable level of growth considering the declines of 2021 and 2022. A substantial reason for this growth has been a supply side issue with many vendors hesitant to bring their property to the market. New listings in Sydney were down 14.80% in the June month compared to same time last year. We are noting an increase buyer confidence, with the view that the interest rate cycle has neared its peak.

We are also noting that the increases in property rental prices has slowed, with a flattening of growth in this space. Cost of living pressures are front of mind for many households, especially families, with many opting to reduce their fixed accommodation costs. We are seeing particular softening of rentals greater than the +\$1,000 per week level, with tenants opting to secure reduced accommodation elsewhere.

As we look to the remainder of the year, we predict a modest increase to rental rates over this period. On the sales front, we are seeing signs of increased supply of new listings as vendor confidence in the market increases and many look to capitalise on this strong position.

In this challenging selling environment, it is imperative to have an experienced agent on your side involved in the flawless marketing and strong negotiation of your property. If you are thinking of selling contact our experienced agents to see how we can achieve the best result possible for your property.



CATHERINE ONG
PRINCIPAL & AREA EXPERT
0418 672 881



JEREMY ONG
PRINCIPAL & AREA EXPERT
0488 242 508



Isre.com.au/artarmon

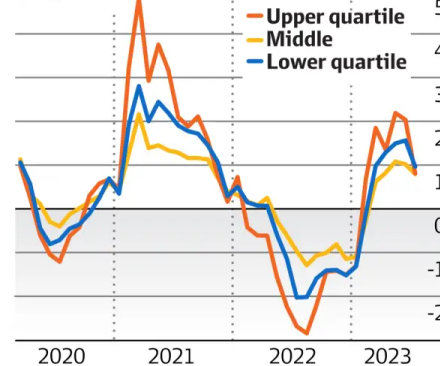
SALES RESULTS FOR WINTER 2023

Address				Sale price	Sale date
11/1A ROBERT RD	3	2	2	\$1,970,000	29/07/23
6/342 MOWBRAY RD	2	1	1	\$1,020,000	28/07/23
45/7 JERSEY RD	1	1	1	\$680,000	04/07/23
14/2 ROBERT ST	1	1	1	\$850,000	28/06/23
13/108 RESERVE RD	2	1	1	\$967,000	17/06/23
25/21 ERIC RD	1	1	1	\$740,000	15/06/23
2/110 RESERVE RD	3	2	1	\$1,750,000	13/06/23
17/1 HAMPDEN RD	2	1	1	\$1,251,000	10/06/23
10/85-91 HAMPDEN RD	2	1	1	\$895,000	09/06/23
40/8 BULLER RD	2	1	1	\$1,090,500	03/06/23
14/6 JERSEY RD	1	1	1	\$725,000	01/06/23
503/2 BROUGHTON RD	2	1	1	\$920,000	01/06/23
101/4 BROUGHTON RD	2	1	1	\$925,000	30/05/23
12 SELWYN ST	3	1	2	\$3,180,000	26/05/23
47/1 JERSEY RD	2	1	1	\$1,207,000	20/05/23
803/4 BROUGHTON RD	2	1	1	\$1,260,000	13/05/23

*Data where prices disclosed from the period 13/05/23 – 29/07/23 via RPData.

Change in dwelling values (% MoM)

SYDNEY



Source: Corelogic

		Quantity	Lowest Sale	Highest Sale	Median Value	Average Value
HOUSE	3 Bed	1	3,180,000	3,180,000	3,180,000	3,180,000
	1 Bed	4	680,000	850,000	732,500	748,750
UNIT/THOUSE	2 Bed	9	895,000	1,260,000	1,020,000	1,059,500
	3 Bed	2	1,750,000	1,970,000	1,860,000	1,860,000

SALES SUMMARY FOR WINTER 2023