

# Artarmon Gazette

number 8 **june 2000**

*Newsletter of the Artarmon Progress Association*

## Progress Association saves the day

The Artarmon Progress Association recently joined forces with the Naremburn Progress Association to force the RTA into rethinking their design of the proposed changes to the Gore Hill freeway and Lane Cove tunnel.

The RTA proposal for the widened freeway contained a significant drawback for Artarmon residents. The link from Reserve Road to Lane Cove, Gladesville and beyond was to be discontinued to allow access and exit points to the new tunnel to be constructed where the Artarmon on off ramps are now located. Reserve Road was to be connected to the tunnel only. Access from Artarmon to Lane Cove and beyond would have required a route through the Artarmon industrial area, Pacific Highway and Epping Road.

The Artarmon and Naremburn Progress Associations voiced strong objections to this proposal. They pointed out that residents of both areas as well as other areas including hospital traffic would have been significantly disadvantaged by the proposed changes.

The RTA has now agreed to provide a link from Reserve Road to Lane Cove.

The area surrounding the tunnel entrances is now likely to contain possibly 12 lanes including entry and exit lanes to the Pacific Highway and Reserve Road, as well as through access to Longueville Road and the Tunnel.

The proposed widening of the freeway currently involves an extra transit lane in each direction the full length from Longueville Road to Naremburn.

One lane in each direction is proposed to be added to the existing freeway on each side, outside the existing lanes, from Longueville Road to the railway line. From the railway line to Willoughby Road, two lanes are proposed on the north East Side, with the centre of the freeway to be moved over one lane. Unfortunately this will mean some of the trees that have just managed to reach a reasonable height along the edge of Willoughby Road will have to start all over again!

Minimal resumptions are proposed, with most of the required land already owned by the RTA.

Alterations to all the bridges including Willoughby Road at Naremburn are required for any proposed widening.

Noise barriers are planned to conform to the current standard.

A bike and pedestrian path is planned to run along the southern side of the freeway, outside the noise barrier, from the Pacific Highway to Park Road and then under the freeway to join up with Hallstrom Reserve.

Committee member Roger Stuart-Smith who is an Artarmon resident and a traffic engineer represented the Artarmon Progress Association at meetings with the RTA designers and Environment Impact Study (EIS) project team. The meetings are called Focus Groups.

The focus groups follow an initial public exhibition as part of a process of gathering community input. Other focus groups have been conducted in relation to tunnel ventilation, cycling, pedestrian and public transport.

Site of the eastern entry and exit to the proposed Lane Cove Tunnel.



*Continued on Page 7*

# Artarmon Gazette

PO Box 540 Artarmon 1570

The *Artarmon Gazette* is published bi-monthly by of the Artarmon Progress Association. It is distributed by volunteers, free of charge to Artarmon residents and businesses.

The *Artarmon Gazette* seeks to inform local residents and business people about current events and issues; to provide them a forum in which to discuss matters of interest and concern.

Written contributions and photographs are very welcome. Please submit all non-advertising material to the Editor. Material can be received on disk or via Internet. Some minor editing may be necessary for considerations of space and layout.

Views and opinions expressed in the *Artarmon Gazette* are not necessarily those of the Artarmon Progress Association or its members. While all care is taken for accuracy, no responsibility can be taken by the Association, the Editor or the printer.

#### Editor

Brian Morris

02 9415 3533, brianandbelinda@one.net.au

#### Advertising

Barry Thompson

02 9412 3296, bj@mpx.com.au

#### Distribution

Tony Kemm

02 9419 6927

#### Publisher

John Peacock

02 9413 4824 jpeacock@yarranbaxter.com

## Artarmon Progress Association

PO Box 540 Artarmon 1570  
(Established 1914)

### COMMITTEE 1999-2000

#### PRESIDENT

John Peacock

02 9413 4824

#### VICE PRESIDENT

Keith Anderson

02 9411 1082

#### TREASURER & TRAFFIC MATTERS

Roger Stuart-Smith

02 9411 3140

stuartson@bigpond.net.au

#### SECRETARY

David Bruce-Steer

02 9411 6616

dobs@ozemail.com.au

#### MEETINGS

Anne Weinert

02 9411 4754

aweinert@zip.com.au

#### Brian Hall

02 9904 6646

bhall@planet.net.au

#### MEMBERSHIP

Peter Nestor

02 9419 3925

nestor@bigpond.net.au

#### FEDERATION & GAZETTE

Barry Thompson

02 9412 3296

bjt@mpx.com.au

#### Tony Kemm

02 9419 6927

Jillian Williams

02 9411 5755

## Editor's viewpoint

WELCOME to the new look *Artarmon Gazette*, the official voice of the Artarmon Progress Association. This publication is put together by Artarmon residents on a voluntary basis. Most of us are not skilled in the publishing world and we are not aiming to put Rupert Murdoch out of business, we simply want to keep our fellow residents informed of matters that may be of importance to them.

Everybody on the *Gazette* team has put in countless hours of their spare time to make this edition possible, for which I sincerely thank them.

Thanks to our advertisers who have made this publication possible. It was most encouraging to see the level of support provided by local businesses to this local enterprise.

As an Artarmon resident this is your newspaper. Tell us what you like or dislike. Tell us what is happening in your street or organisation. Your suggestions could possibly win you a \$50 gift voucher from our local 'Liquorland' store. Your feedback can only help the growing community awareness of a suburb that we are all proud to live in and belong to.

Some of the *Gazette's* publishing team would like to have established our 'green' credentials by printing the *Gazette* on unbleached, recycled paper. But it isn't that easy. One paper manufacturer produced such a product for a while but had quality and other problems and eventually stopped manufacture. So, now, such paper is a specialty product at a commensurate price. We are assured that the regular bond paper that we are using contains a proportion of recycled pulp. If you know of a better option, please let us know.

## Editor's mailbox

### Unfinished business

Over three years ago, our small business community was successful in convincing Willoughby Council to spend some money here in Artarmon. The beautification of our shopping strip was the result. It took many months of canvassing the support of many, and lobbying the 'power that be' but in the end the job was done. Or was it?

In fact, the work is not complete. Repeated requests to finish the promised project have been met with counter promises of the 'Master Plan' which should soon be with us, but no definite timetable is suggested. The original beautification project that was agreed to by everyone includes the provision of benches, planter boxes and litter bins on Hampden Rd between Broughton Rd and Jersey Rd. Tables and benches were also to

## President's report

The re-launch of the *Artarmon Gazette* is an exciting development for our suburb and the Artarmon Progress Association. Our local publication was started independently by Glenda Gartrell in early 1999 and Glenda kindly offered to hand over the project over to the Progress Association. The enthusiasm of Brian Morris, Barry Thompson, Terry Biggenden and Tony Kemm has meant that we were able to accept Glenda's offer.

As well as the *Gazette*, the APA plays an important role in providing information about goings-on that affect our lives through our monthly meetings. These meetings are arranged and publicised by the team of Anne Weinert, Peter Nestor and Brian Hall.

Another community service being taken up by the APA is the Heritage Week Tours, run in April 2000 by the City of Willoughby and the enthusiasm of Glenda Gartrell. In 2001, Marianne Nestor will co-ordinate this project which is perfectly suited to reinforcing the heritage value of Artarmon. Whilst these activities add to the sense of community in Artarmon, our traditional role as an advocate for Artarmon continues.

Your fellow residents that represent you at various meetings and monitor WCC developments are Keith Anderson, Roger Stuart-Smith, David Bruce-Steer and Barry Thompson. Thanks go to all involved. If you have an inquiry or comment regarding the APA, write to: PO Box 540, Artarmon 1570 or call 9413 4824

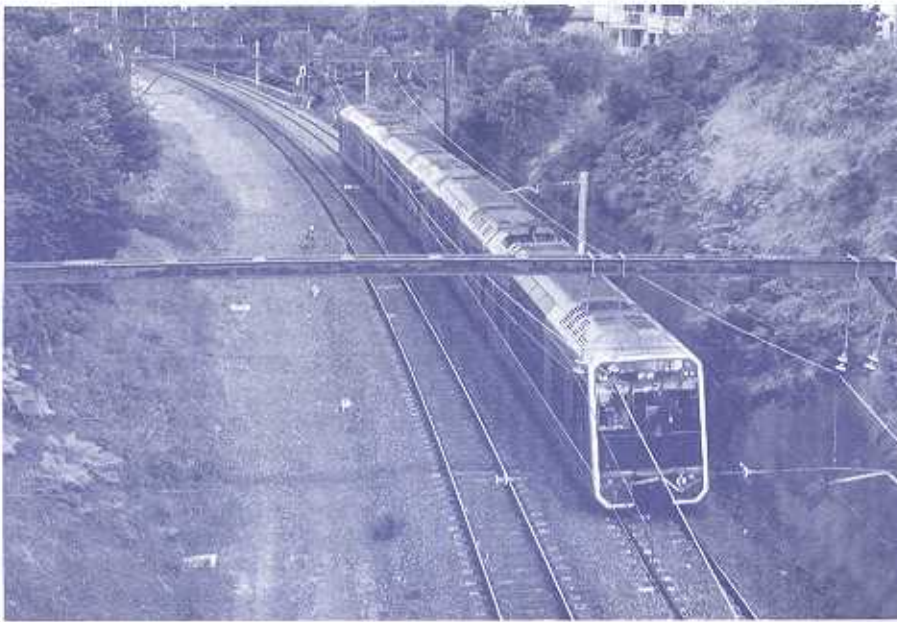
**John Peacock**  
President, APA

be provided on the railway side of Hampden Rd, a feature keenly anticipated by the lunchtime crowds. None of this has been done and many of our ratepayers are far from happy.

Mayor Reilly promised completion of the work two years ago! In the meantime, momentous amounts of money have been spent by Council in Chatswood and elsewhere. What about our deserved cut? Ratepayers have a right to be upset.

Shopkeepers also are concerned about an increase in undesirables in our area. Incidents have involved the chemist, deli and coffee shop. We would like to see increased police patrols that might complement the night patrols by private security firms for which the local businesses already pay.

**Guyen Fiasson**  
President, Artarmon Chamber of Commerce.



A Hornsby-bound 'Tangara' train between Artarmon and Chatswood. This section of track will see an increase in traffic from the year 2006.

### More trains for Artarmon

When the Parramatta Rail Link is operating, services through Artarmon will be increased, as trains will no longer terminate at North Sydney. The new link will form a loop enabling trains to cross the harbour bridge turn left at Chatswood and rejoin the western line at Epping.

Addressing the Artarmon Progress Association's May 30 meeting Erica Adamson of the Parramatta Rail Link Company, told residents that construction of the new link will commence as soon as the 4200 submissions for the Environment Impact Study have been considered. They are hopeful for a start early next year.

One of the first stages of construction will

be the new above ground Chatswood station. An extra two tracks and platforms are to be built as well as lifts and escalators in the station upgrade. During construction it will be necessary to close the North Shore lines over many weekends to rebuild the station and two new road bridges. Ms. Adamson said that the new railway line was first proposed by Bradfield back in 1930, but had now become a priority as the western line will be at full capacity within six years, with no room to expand to meet the needs of an ever growing population.

The new link is expected to save 14000 tonnes of carbon dioxide emissions per year as more people leave their cars at home and commute by train.

### Footpath watch

An elderly lady was injured and badly shaken when she tripped on a broken footpath in Artarmon Road recently. It appears that Willoughby Council can only repair footpaths if they are notified about their disrepair. Council officers and workers usually travel by vehicle around the suburb and rarely walk the streets. Therefore they may be unaware of footpath problems. Please help prevent accidents by checking the footpath in front of your property and if it needs repair tell the Progress Association and we will forward a detailed list to council on your behalf.

### Local history project

Godfrey Road resident and North Shore Camera Club President Barbara Bryan is compiling a history of Artarmon. Barbara wants to interview and photograph long term residents with a view to publishing their memories of Artarmon from a resident,

rather than a government point of view. If you would like to sit down and chat to Barbara over a cup of tea then give her a call on 9411 3114. Alternately you may know of someone that Barbara could call.

### Traffic watch

In recent discussions with Willoughby Council, an RTA spokesperson advised that most of the North Shore and Peninsula's roads will be in grid lock by the year 2016 if new car registrations continue to grow at their recent rates in these areas. So, it would seem change is inevitable in our part of this city if it is to retain its amenity.

Have you noticed any traffic changes in your street? At the next Progress Association meeting the guest speaker is Jeff Organ who among other things is Willoughby Council Technical Director for roads. The APA committee are preparing a list of traffic concerns, so if you have any problems with parking or motorists using your street as a rat

run contact Roger Stuart-Smith at [stuartsm@bigpond.net.au](mailto:stuartsm@bigpond.net.au) or 9411 3340. Roger is a traffic engineer and looks after Artarmon traffic problems for the Progress Association.

### Neighbourhood Watch

Neighbourhood Watch continues to be effective. A Tindale Rd resident observed someone climbing into a neighbour's house through a window and called police. The police responded swiftly and in numbers. A suspect was apprehended. Good work all round and the potential for a one man crime wave nipped in the bud. If you have any Neighbourhood Watch enquiries contact Paula and John Jones, 9419 4893.

### Internet tip

With the school holidays here again, some of you may be planning car trips to the country and interstate. Visit [travelmate.com.au](http://travelmate.com.au) and you will find a site full of interest. Type in 'Artarmon' and your destination and route maps will be displayed. Scroll down and there will be accurate directions for every kilometre you have to travel; names of roads and highways; and the time and distance you have to cover. Print it out and give it to a 'navigator' and say goodbye to map reading arguments.

If you want to plan ahead to buy petrol, service station locations and prices are listed. There are also accommodation sites with booking facilities. Games for the kids to play *en route* are also on the web page. Happy Motoring and Happy Holidays! ■

## Artarmon Gazette

### We want your feedback!

Send us a 'letter to the Editor', suggestions on content, or whatever you think might make interesting or thought-provoking reading. The best idea will be published and win a \$50 gift voucher from...



128 Hampden Road Artarmon 2064  
Tel: 02 9419 4317

# Councillors' feedback

## Lesley Stevens

Naremburn Ward

### Heritage

Heritage Week held special magic for Artarmon and the Naremburn Ward. Not only was East Artarmon the focus of Willoughby's Heritage Houses Open Day, the Ward also romped away with two of the three main prizes—an indication perhaps that Historical Society President Paul Strong is absolutely right when he proclaimed this area 'the jewel in Willoughby's heritage crown'.

### Artarmon Industrial Area

With a letter-drop three weeks ago Council signalled its readiness to begin putting parking meters into the Artarmon Industrial Area. This decision was taken by the last Council following recommendations from a 1998 Traffic Management Study together with continuing complaints from local businesses regarding long standing anarchic parking practices.

At the same time Council has opened discussions with the State Transit Authority to look at public transport initiatives in the area.

The object of the exercise is to regularise parking in the AIA so that it is equitable for all, and to encourage the use of public transport, not to push traffic and cars into other areas.

Council officers have advised me that residents adjacent to the area may see an increase in parking for the first few months as AIA employees sort out alternative methods of transport. But they also tell me that this will drop away again.

Areas adjacent to the Industrial Area have been advised and I urge residents to monitor and report to Council (or myself) any changes in local parking habits, which could be the result of this implementation.

Stay vigilant but cool. Rest assured we will all be watching.

### Parramatta-Chatswood rail link

Unofficially I am informed that Willoughby does not have a prayer of changing State Rail's plans and undergrounding Chatswood railway station. I don't know about you, but this makes me a very disgruntled resident as well as an outraged Councillor.

To date Council's one chance to express its views to State Rail has been through our submission on the Environmental Impact Study. That was it. End of consultation. It now seems unlikely that there will be any other opportunity for dialogue. Nor have I

heard a whisper of any additional State funds coming our way to develop the additional infrastructure needed to cope with this development.

The Parramatta-Chatswood rail link will bring thousands of extra commuters to the CBD, mostly at a time in the day when the traffic congestion and parking difficulties are already horrendous. As a Council we must plan and implement the infrastructure needed to cope with this sudden increase. This involves a dramatic revision of the interchange, a revised traffic management plan, a revised open space plan, upgraded public facilities, upgraded security, and a much enlarged maintenance role for council staff.

The undergrounding of Chatswood railway station would offer some exciting opportunities for our city and might offset some of the headaches that the rail link will bring us as a community. Parramatta is to be undergrounded but when it comes to Chatswood, unhappily State Rail has suddenly gone deaf.

I am a supporter of this rail link but not at any cost! What about you?

### Streetscape

While I'm in beefing mode let me spit a few chips about our streetscapes and traffic calming devices. A casual tour through Willoughby's streets will assure you of two things: there is no consistency of design when it comes to traffic calming measures; nor do there seem to be any guiding principles which draw together the goals of effectiveness and aesthetics.

Together with Cr. Hickie I have been questioning Council officers as to why Willoughby can't lead the way when it comes to developing traffic calming measures which complement the streetscape rather than detract. Our Officers (who know a thing or two about new Councillors) responded smartly and set up a sub-committee of which Cr. Philip Hickie and I am now members.

Notwithstanding this development we all, our Officers included, have hopes of coming up with some design guidelines, which will inform all future practice. If anyone out there has some great ideas on design in this area now is the time to give me a call.

### Electromagnetic radiation

The proposed baseline survey is taking shape. Council has appointed EMC

Technologies to undertake the study. The Consultant will be preparing a draft brief which will be made available for community comment before being finalised.

### Fond farewell

Editing a community newsletter is not an easy task. The job demands the combined skills of a newshound, archivist, psychiatrist, commentator and oracle. As a community we were lucky enough to have that rare combination in Glenda Gartrell. Thank you Glenda! It was a tireless contribution appreciated by every *Gazette* reader.

As the shadow of Glenda departs a big thank-you must go to new Editor Brian Morris for stepping up to the Artarmon *Gazette* plate. 'Onya' Artarmon's very own B1.

Should any of you want to talk to me about Willoughby issues, problems or future directions for Council please call me on 9436 4432 or e-mail me on [lstevens@bigpond.net.au](mailto:lstevens@bigpond.net.au).

## Kate Lamb

Naremburn Ward, Deputy Mayor

Traffic, traffic, traffic! we have so many challenges arising out of our ever-increasing reliance on the private motor car! Whilst there is much that we have no control over (e.g. the M2 tunnel & Gore Hill widening), it is certainly the case that residents hold us responsible for doing something about it!

Council officers recently prepared an excellent overview of our activity (contact Council's Infrastructure Branch for a copy). Our recent stakeholders survey demonstrated that while some people still see increased and free parking as a solution to congestion, there are growing numbers who understand that the more you provide for cars, the more cars you get.

There are also those who do not see why if you have a car, you should not be able to drive it to work and park free all day! This is the current situation in the Artarmon Industrial Area. Council has resolved to install meter parking throughout the area, this year. Mostly timed to suit the customers (1-2 hours), with some all day areas as well. As there is some resistance at present, the matter will be a test of Council's resolve to

actively control demand for commuter parking. At the same time, we will be doing our best to improve pedestrian access to and from the stations and to encourage a local bus service to operate in the area (as it once did).

On the other hand, there is a growing number of projects in the city, which aim to make pedestrian and cycle links functional and attractive alternatives, especially for local trips. A pamphlet, *Walking & Wheeling in Willoughby*, available from Council offices and libraries was produced by one such project and has an excellent map showing many of these routes. Another project is our newly constituted Bicycle Advisory Committee which includes representatives from the Pedestrian's Association (Artarmon resident, Jan Cumming), Progress Associations, local residents and bicycle groups. As a very new bicyclist, I am thrilled to be chairing this committee!

On Sunday 28th, I was very proud to take Council's corporate banner across the Harbour Bridge in the company of Councillors Lesley Stevens, Terry Fogarty and Philip Hickie. (and so many others!!) in support of work towards reconciliation with the Aboriginal people. We have a pledge book collecting signatures from local residents in the foyer at Council, should you wish to add yours.

Finally, thanks so much to Glenda Gartrell for establishing the *Gazette* and best wishes to Brian and the team, for giving it 'legs'. I'm wishing you every success! ■



A popular facility in the Artarmon shopping centre: the community notice board by the station.

## Working from home?

If you are working from home, you are not alone. The SOLO Home Business Network is in your area offering support, networking and business information to people working in their homes. SOLO was founded early in 1998 by Artarmon resident Sue Moffitt of 'Showing You Sydney'. Sue recognised the need for support for those working from home and devised a leaflet drop in the Artarmon and Willoughby areas inviting local

business principals to gather for lunch. That inaugural lunch was supported by 26 local business principals. The group has since grown and now has over 100 members. SOLO members meet monthly for local lunches hosted by interesting speakers on a variety of topics. They also hold different events throughout the year to suit all ages and professions.

For more information call Ellie Brasch on 9419 8717 or email her at: [ebe@enternet.com.au](mailto:ebe@enternet.com.au)

## Graffiti corner

The director of the next Adelaide Festival, Prof. Peter Sellars from the University of California, gave a talk in Sydney recently. One of the many fascinating comments he made was that a lot can be learned about a city by reading its graffiti. He claimed that youth is generally silenced by the 'wisdom' of the older generation, by the reigning paradigm, and that one of their responses is to make themselves heard through graffiti. Another more alarming response is suicide.

It is planned to dedicate a corner of this *Gazette* for comment from the younger Artarmon generation. So here is your space. We plan to publish names only if requested and subject matter is entirely open, providing it is not offensive. Please try us.



# Artarmon resident profile

This is the first of a series of profiles of local residents that we feel are of interest to you. If you know of anyone you feel worthy of mention please contact the editor



Glenda Gartrell at work in her Artarmon Home.

THE SUCCESS of the recent Artarmon Heritage Week was mainly due to Muttama Road resident Glenda Gartrell. Glenda had the vision to apply to council for Artarmon to be the focus for the City of Willoughby celebrations. She worked tirelessly to organise heritage walks, open house inspections and historical photographic displays. No mean effort, but that's the sort of thing Glenda takes in her stride. She is very keen to maintain the sense of community and take advantage of the changing population which brings new people with new ideas to Artarmon. That is one of the reasons Glenda started this community newspaper eighteen months ago.

With some assistance from her husband Richard, she talked to the local business people, sold them advertising, wrote stories, took photos, laid out the entire newsletter on her home computer, found a printer and then walked the streets delivering 5,000 copies to the community. No small wonder she finally said 'enough' and asked the Progress Association to take over the Gazette. Glenda has been replaced by five volunteers and a small army of delivery people!

Glenda has been an Artarmon resident for more than twenty five years, has raised three children, all of whom went to Artarmon School and is now helping raise her five grandchildren. Glenda has always worked in the field of media relations. She has worked for State Premiers and Ministers and today she runs her own

corporate communications company from home. There was a time in the early seventies when she tried her hand in the retail business and, true to form, not only was it innovative, but successful. She opened an indoor plant business on the corner of Sailors Bay Road in Northbridge. It was the third business of its type to open in Australia. Business came not only from the local community, but from interstate and New Zealand as well. One memorable sale Glenda recalls was from a Queensland lady who was on her way to catch a plane home and she wanted six large trailing fern baskets to hang in her yacht to impress business guests. It was a struggle to get the lady, her luggage, plus the trailing ferns into a taxi. The end of the story is unknown, that is, were the baskets allowed as cabin luggage in the aircraft?

Despite being busy running the plant shop and caring for her children, Glenda still found time to assist her husband Richard who was representing Artarmon as a Councillor on Willoughby Council. At that time Willoughby was one of two municipalities in the metropolitan area that did not have a library. Richard with the support of another councillor, Harden Road resident Elizabeth Rice, fought hard and was able to have the present library built. Their names, along with other councillors, are on a plaque outside the library entrance in Chatswood. Another battle of the 'seventies was to save from demolition the Burley Griffin Incinerator which overlooks Flat Rock Reserve.

Glenda has a passion about Artarmon and its lifestyle. She believes that working with the Council to support and reinforce their planning policies and regulations is the best way to preserve the space, the gardens, the parks and our local shopping centre, while keeping out unsympathetic development.

So what does Glenda do in her spare time? She and Richard jump on their push bikes and join the RTA 'Big Ride' from Tamworth to Newcastle for eight days, camping out each night. At other times she is often found caring for her large garden. But, no matter what Glenda does, she does it well and her ever watchful eye never loses sight of what is happening in and around Artarmon. Here is a fellow resident that we should all be proud to have in our community. ■

## My Favourite Business

By Brian Morris

*This space will be reserved in each edition for you to tell us of a local business that is a favourite of yours. Email or telephone the editor about your favourite business.*



Anderson's store c1930. (Photo: Willoughby City Council)

Have you even needed just two wood screws and you find that the hardware store only sells them by the box full? Frustrating, isn't it. Anderson's Hardware at Naremburn not only sells loose screws, but birdseed by the handful or the kilo. They also believe in good old fashioned advice on how to do the job and what tools and materials you will need. In my home maintenance business they are my right hand advisers, as I often come across tasks where I'm not too sure which is the best method to follow.

The store has been on its present site since 1914 and although it was a hardware store as we call them today, in those days it was known as Anderson wood, coal and coke merchants. In fact there used to be a large storage facility for the wood, coal and coke where the Crown of the Hill bottle shop is now located. Until recently there were six local hardware stores including one in Artarmon, but Anderson's is the only survivor in the growing trend to large cash and carry stores. Despite this, Anderson's maintain competitive prices by keeping a low overhead. Several family members help out.

The co-owner Wes, his parents, his father in law and often the grandchildren are seen in the store, providing good, old-fashioned friendly service. They do not even have a computer! But who needs computers when you can buy screws without packaging or bar codes.

Anderson True Value Hardware is located in Willoughby Road Naremburn opposite St. Cuthbert's Church and next door to the Thai restaurant. ■

(continued from Page 1)

### New access to Falcon Street

Motorists travelling along Willoughby Road and the freeway heading for Manly and points en route have no direct access without travelling through Artarmon and Naremburn to Cammeray.

New north facing ramps are proposed to exit the freeway at Falcon Street. The Artarmon Progress Association has advocated these ramps for some time as a means of alleviating through traffic in the Artarmon/Naremburn areas.

The Artarmon Progress Association representative was critical of some design aspects of the proposed ramps presented to the first focus group meeting in that they might not be as effective in attracting traffic from some areas onto the freeway. The proposed toll will encourage some traffic to continue to use the back streets of Naremburn and Artarmon. The Designers are considering further options in relation to the ramps and will be presenting their considerations to the next Focus Group meeting.

There are no plans in the proposal to provide north facing exit and entry points to the freeway from Willoughby Road.

When the Focus Groups have been completed, options for further public input into the preferred option will be sought through information days, briefings, telephone freecall information line, a web page, this newspaper and newsletters.

Once public opinion has been distilled, the EIS should be released towards the end of this year. This should allow the likely three year construction time to start in mid to late 2001! ■

## Some Artarmon statistics



If you live in East Artarmon you most likely think that you live in a suburb that consists of detached houses occupied by families with high mortgages. The official statistics of postcode 2064 tell a different story.

Artarmon has a population of 8,410. The largest group live by themselves, mainly in rented flats, paying a weekly rent of between \$200-300. They are professional people with a bachelor degree and travel to work by car. They have no religion, 54% of them are

Australian born and, of the overseas born, most came from the U.K.

The second highest grouping paints a different picture. They are a couple with kids. They own their own home, and have no mortgage, their religion is Catholic and they travel to work on the train.

20% of our population is aged under 19. The 20 to 39-year-olds account for 43%; the 40 to 59 year olds being 23%, and our senior citizens total 14%. Most of the population does not practice a religion, and, of those that do, most are of the Catholic faith, while the rest belong to the Anglican, Uniting, Presbyterian and Reformed Churches. Of those paying a mortgage, the far biggest group pay in excess of \$1,500 per month. ■

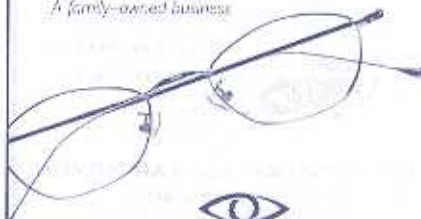
## OPTOMETRISTS

122 HAMPDEN RD ARTARMON

ROLAND TAN (B.Optom. UNSW)  
WENG-TSEL LAU (B.Optom. UNSW)  
Phone: 9412 3257

Mon-Fri: 9am-6pm  
Saturday: 9am-12.30pm  
CLOSED WEDNESDAYS

A family-owned business



Members of the  
Optometrists Association of Australia

## PHYSIOTHERAPY

For over ten years,  
Physiotherapist Ann  
Liebert has run her  
practice in Artarmon,  
specialising in:

- Back pain
- Musculo-skeletal pain
- Sports injuries
- Occupational-related pain
- Neck headaches

**Ann Liebert**

M.A.P.A., M.M.A.P.A.  
PH: 9419 3494

## Artarmon Medical Centre

92-94 HAMPDEN ROAD ARTARMON 2064

YOUR LOCAL FAMILY GP

Comprehensive health care for you and your family.

Paediatrics  
Men's & Women's Health  
Cardiology  
Sports & Travel Medicine  
Immunisations  
Preventative care  
Family Medicine

Phone: 9411 5858 & 9419 8448

Fax: 9411 5212



Ella Baché Specialist

*Gift Vouchers Available*

3A BROUGHTON ROAD ARTARMON  
PHONE: 9904 6090



There is something wrong in this photograph. Can you tell us?

## Dates for your diary

### Tuesday June 27, 8pm. Elizabeth St. Library

**Jeff Organ** Willoughby Council's Director of Technical Services (Roads, Traffic, Drains, Transport, Open Spaces). Will give an update on road & planning Management.

### Monday July 31, 1.30pm Elizabeth St Library 'Neighbourhood Watch'

**Kerry Bradley**, Willoughby Council's Children's Services Operations Coordinator at will talk on 'Children's Play Groups, Council Services, and a role for grandparents in children's development.'

### Tuesday July 25, 8pm. Elizabeth St Library

**Linda Cardew** Willoughby Council Project Manager, Property & Commercial Services will speak on progress with the Chatswood CBD Master plan/Civic Place

### Tuesday August 29, 8 pm Elizabeth St Library

**Joe Hockey** our local MP & Federal Under Secretary of Finance. North Shore & Federal political update (not to mention the GST!)



At 'Coffee Express', you'll enjoy pleasant surroundings and the friendliest service while you take a break to savour a perfect cup of freshly roasted coffee.

124 HAMPDEN ROAD ARTARMON  
PHONE: 9884 9077  
MON-FRID: 7.30AM-5.30PM  
SAT: 8.00AM-5.00PM, SUN: 9.00AM-4.00PM

## Meet Les Cheung ... the new Principal of Asset Realty Artarmon

Born in Papua New Guinea and educated at Barker College, Hornsby, Les is a commerce graduate of the University of NSW and a long time resident of the North Shore.

A chartered accountant, Les has had extensive experience in the real estate industry as an advisor and accountant to property investors and developers. His financial approach to real estate sales and marketing is a very real plus for anyone looking to selling their home.

Currently Treasurer of Chatswood Golf Club, Les has represented Northbridge Golf Club in Senior Pennants. A former First XV rugby player with Barker College and Barker Old Boys Football Club, he is also a past State grade pennants squash player, representing Papua New Guinea in the 1985 East Asian Squash Championships.

Les is a respected and well-known member of the North Shore professional and sporting community, and has an extensive network of contacts, placing him in the 'box seat' when looking for buyers for your home.

Call us today on 9411 4711

70 Hampden Road Artarmon  
[www.assetrealty.com.au](http://www.assetrealty.com.au)

**ASSET** Realty





ARTARMON  
FRUIT  
MARKET

FRESH SUPPLIES DAILY

A FAMILY BUSINESS



CONTINENTAL DELICACIES  
FREE DELIVERY

Phone: 9411 1401, Fax: 9411 4832  
106 HAMPDEN ROAD ARTARMON

ARTARMON  
*Valet Service*  
DRY CLEANING

98 Hampden Road Artarmon

Conveniently located right opposite the station. Quality dry cleaning, repairs and alterations for all your precious garments. Call in and discuss your needs with Evan.

Phone 9419 2830

MOWBRAY  
GARDEN  
CENTRE

428 MOWBRAY ROAD LANE COVE  
OPEN SEVEN DAYS

MASSIVE PLANT  
SALE  
*for the*  
MONTH OF JUNE

CAMELLIAS

25% off marked price  
*'Sasanqua' & 'Japonica' available*  
All sizes

GARDENIAS

30% off marked price  
*'Magnifica', 'Florida', 'Radicans', 'Golden Magic' & 'Aimee Yoshiba' available*

BUXUS

30% off marked price  
*'Sempervirens', 'Microphylla', 'Suffruticosa', & many more available*

AGAPANTHUS/CLIVIA

30% off marked price  
8" pots, all only \$10.00 each

MONDO GRASS

4" pots, reduced from \$4.95 down to \$3.50

DOUGHTY FAMILY  
BUTCHERY

Support  
your local  
butcher—  
you won't  
buy better!



PHONE ORDERS  
WELCOME!

102 HAMPDEN RD ARTARMON  
PH: 9412 1746

Do you need some help  
with home maintenance?

Services include:

Small 'fix it' jobs  
High pressure water cleaning  
Whole house painting  
Landscaping

PROMPT ATTENTION

References for honest and reliable  
work from many Artarmon residents

Artarmon  
Home Maintenance  
Services

Phone: 9415 3533  
Mobile: 0412 114 694

ARTARMON  
MOWERS

132 HAMPDEN RD ARTARMON  
THE SMALL ENGINE  
SPECIALIST

mowers  
chainsaws  
brushcutters  
stationary engines  
small engine repairs

PHONE: 9429 7045  
AH: 0427 311 399

LOCAL & AUSTRALIAN OWNED



PAY NO 'GST' FOR 3  
MONTHS!

WE WILL PAY YOUR  
'GST' THROUGHOUT  
JULY, AUGUST &  
SEPTEMBER. ALL OUR  
PRICES REMAIN THE  
SAME!

Landscaping & Consultancy  
services are also available

PH: 9427 1935

*Artarmon*  
**HOUR**  
Photo Laboratory




**Free Index Print**

**Come and see us for great photos now on Kodak Premium Royal Paper and receive a FREE Index Print of your entire roll of processed 35mm and APS formats!**

**88 Hampden Road Artarmon  
Ph: 9413 1228**



# Artarmon School News



His Excellency the Honourable Gordon Samuels AC CVO Governor of NSW officially opened two new classrooms on Saturday June 10.

The P&C took five years to raise \$240,000 to build the classrooms at the end of the administration block on the 3-6 campus. One classroom will become a computer room with Internet access and other software programs for K-6 students. The other will become a specialist music room to be used by bands, choirs, and string groups.

Lindsay Horton, Bruce Retallick, Craig Lister, Mark Bryant and Ian Butcher formed the Building Committee which enabled the building to become a reality. Bruce Retallick and Craig Lister spent an inordinate amount of time and effort liaising with the Department of Education and Training representatives, architects and builders. An extremely challenging task.

After the building was officially opened with the Governor unveiling a plaque, a time capsule was buried to be opened 2020. Everyone was then entertained with performances by the school band and choir as well as a dance group performance. Parents, students and friends then enjoyed afternoon tea with a sausage sizzle, Ferris wheel rides, recreational rides of Captain Cook's Endeavour, Alien Attack and the haunted jumping castle. It was a real carnival atmosphere with laughing clowns, fairy floss, face painting, craft activities and a student art exhibition. The days activities concluded with a family disco party.

Congratulations to Richard Davey of class 6 O/C who won a national schools essay competition with his essay 'What Makes A Champion?'. The competition was organised by Professor Allan Snyder of The Centre For The Mind which is a broad based research centre, a joint initiative of the Australian National University and the University of Sydney. The competition was open to all Australian children in years 7&8 yet this did not deter Richard who is in year 6. Richard received his prize from science writer Dr. Karl Kruszelnicki at a ceremony held at the University of Sydney. Well done Richard! ■



At Laing + Simmons, we believe that for every property, there's a perfect buyer. Someone who'll pay maximum market price, because for them, the property is *right*. All we have to do for the property we handle, is find them. Usually this means working a little harder—persisting when others give up.

Benefit from our personalised service, professionalism and unique marketing skills to gain the best results in sales and rentals.

*Feel free to ring us for a confidential free market appraisal*



**Laing+Simmons**  
**ARTARMON**

Shop 3, 44 Hampden Road  
Artarmon NSW 2064

9411 7788

*Beyond the expected*

# ARTARMON ANGLICAN CHURCH

(Incorporating St Basil's and Artarmon Community Church)

6 BROUGHTON ROAD ARTARMON, PHONE 9412 1315

## Kids Church

An exciting new Sunday program for children, with imaginative learning activities and a specially designed curriculum to help kids grow into the church.

Runs parallel with the Artarmon Community Church, 11 am Sundays.

Contact Children's Minister, *Angela Peeverell* on 9904 7572

## ESL Classes

Our English as a Second Language Classes (for beginners, medium and advanced) resume on Sunday July 23 at 9.00 am.

Trained and experienced teachers are available each week to help students in their day-to-day use of English.

New enrolments welcome. Contact *Kim Catt* on 9413 9947

## 'Welcoming Wednesday'

'Welcoming Wednesday' is a social group featuring interesting activities and special guests—10.30 am on the second Wednesday of each month. As the name suggests, *everyone* is welcome!

For current program information, call *Leure Olsen* on 9498 3925

## Regular Sunday Services

*Parish Eucharist: 9.00am*

*Artarmon Community Church: 11.00am*

An inclusive Christian church where *all* people are *always* welcome. We seek to contact, assist, empower and disciple everyone, regardless of gender, race, cultural background, sexual orientation or political beliefs.

## Professional advice about your medicine and cheaper private prescription prices

Better and more expensive medicines are being introduced regularly and cost pressure is forcing the government to send many of these new medicines to the "non-PBS" or "private" list. This means you will normally pay full price.

To help you, we have created a new price list which means you will now pay less for many private prescriptions at **Watson & Logan Pharmacist Advice**.

The really good news is that our service won't change. At **Watson & Logan Pharmacist Advice**, our pharmacists will offer to sit with you to help you understand how to use your medicine safely and effectively. We'll help you remember your doctor's instructions about your medicine and explain how it works, its

possible side effects and its interaction with food and other medicines.

We're dedicated to help you achieve the best possible outcome from all your medicines by providing verbal and written advice. You'll love our service!

## Watson & Logan

96 Hampden Road Artarmon  
Phone 9419 6880 or 9419 6868

# Pharmacist Advice



# Market Update



**Gill Davis**  
Top selling R & W  
Salesperson

by... Gill Davis

Principal  
Richardson & Wrench  
Artarmon and Chatswood

The current financial year (1999-2000) has seen a dramatic surge in prices followed by a slight easing in recent weeks.

Most obviously, four houses have burst through the million dollar mark, with the record now standing at \$1.38 million for 25 Cameron Avenue, and the average nearly \$800,000. This is due to a widespread improvement of houses through renovation and a general market realisation of the attractiveness of the suburb and its superb location.

Units and townhouses have continued their steady

increase, with the six month average from July to December 1999 up to around \$304,000.

In the past, Artarmon has been remarkably resilient to market corrections. Whilst the 'hype' has gone due to successive interest rate rises, there is still good inquiry for well priced properties, and my expectation is that this will continue.

For more information about your property's sales potential or buying in the area, or to take advantage of our sophisticated, yet user friendly property management service, please call on 9411 7299.

## Artarmon Houses

| PRICE               | 1992/3    | 1993/4    | 1994/5    | 1995/6    | 1996/7    | 1997/8    | 1998/9    |
|---------------------|-----------|-----------|-----------|-----------|-----------|-----------|-----------|
| UNDER \$300,000     | 14(32%)   | 9(18%)    | 3(6.5%)   | 2(4.5%)   | 0(0%)     | 0(0%)     | 0(0%)     |
| \$300,000-\$399,000 | 11(25%)   | 18(36%)   | 16(35%)   | 10(22%)   | 12(24%)   | 1(2%)     | 1(2%)     |
| \$400,000-\$499,000 | 17(39%)   | 16(32%)   | 14(30%)   | 27(60%)   | 16(31%)   | 9(22%)    | 2(4%)     |
| \$500,000-\$599,000 | 2(4%)     | 7(14%)    | 10(22%)   | 2(4.5%)   | 12(24%)   | 11(27%)   | 13(30%)   |
| \$600,000-\$699,000 |           |           | 3(6.5%)   | 4(9%)     | 9(17%)    | 10(24%)   | 15(34%)   |
| \$700,000-\$799,000 |           |           |           |           | 2(4%)     | 8(20%)    | 6(14%)    |
| \$800,000-\$899,000 |           |           |           |           |           | 2(5%)     | 6(14%)    |
| OVER \$900,000      |           |           |           |           |           |           | 1(2%)     |
| TOTAL VOLUME        | 44        | 50        | 46        | 45        | 51        | 41        | 44        |
| TOTAL SALES         | \$15.6mil | \$19.6mil | \$20mil   | \$19.6mil | \$25.3mil | \$24.4mil | \$28.6mil |
| AVERAGE PRICE       | \$355,000 | \$393,000 | \$436,000 | \$436,000 | \$495,000 | \$595,000 | \$650,000 |

Source: The information has been extracted and compiled using the records of the Valuer General's Department and other sources. It is deemed reliable but is not guaranteed.

## Artarmon Units & Townhouses

| PRICE               | 1992/3    | 1993/4    | 1994/5    | 1995/6    | 1996/7    | 1997/8    | 1998/9    |
|---------------------|-----------|-----------|-----------|-----------|-----------|-----------|-----------|
| UNDER \$200,000     | 27(26%)   | 26(19%)   | 18(16%)   | 25(14%)   | 25(9%)    | 4(2%)     | 4(2%)     |
| \$200,000-\$249,000 | 60(57%)   | 80(59%)   | 53(48%)   | 69(40%)   | 103(37%)  | 55(26%)   | 26(14%)   |
| \$250,000-\$300,000 | 18(17%)   | 30(22%)   | 29(27%)   | 63(36%)   | 90(32%)   | 86(40%)   | 84(47%)   |
| OVER \$300,000      |           |           | 10(9%)    | 17(10%)   | 63(22%)   | 64(32%)   | 67(37%)   |
| TOTAL VOLUME        | 105       | 136       | 110       | 174       | 281       | 214       | 181       |
| TOTAL SALES         | \$23.2mil | \$30.5mil | \$26.2mil | \$43.3mil | \$75.6mil | \$60.8mil | \$53.7mil |
| AVERAGE PRICE       | \$221,000 | \$224,000 | \$238,000 | \$249,000 | \$269,000 | \$284,000 | \$297,000 |

Source: The information has been extracted and compiled using the records of the Valuer General's Department and other sources. It is deemed reliable but is not guaranteed.

## Richardson & Wrench

**Artarmon**  
110 Hampden Road Artarmon  
02 9411 7299

**Chatswood**  
72 Archer Street  
02 9411 3600